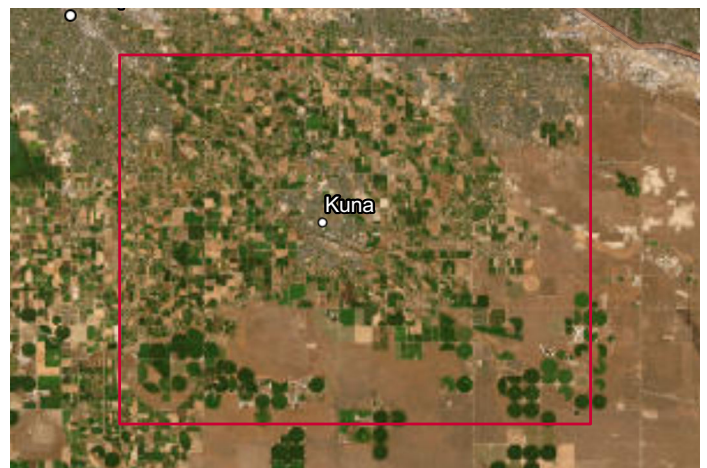
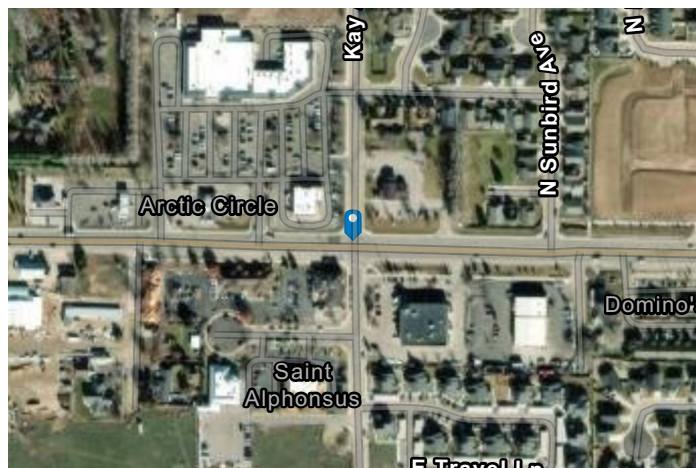
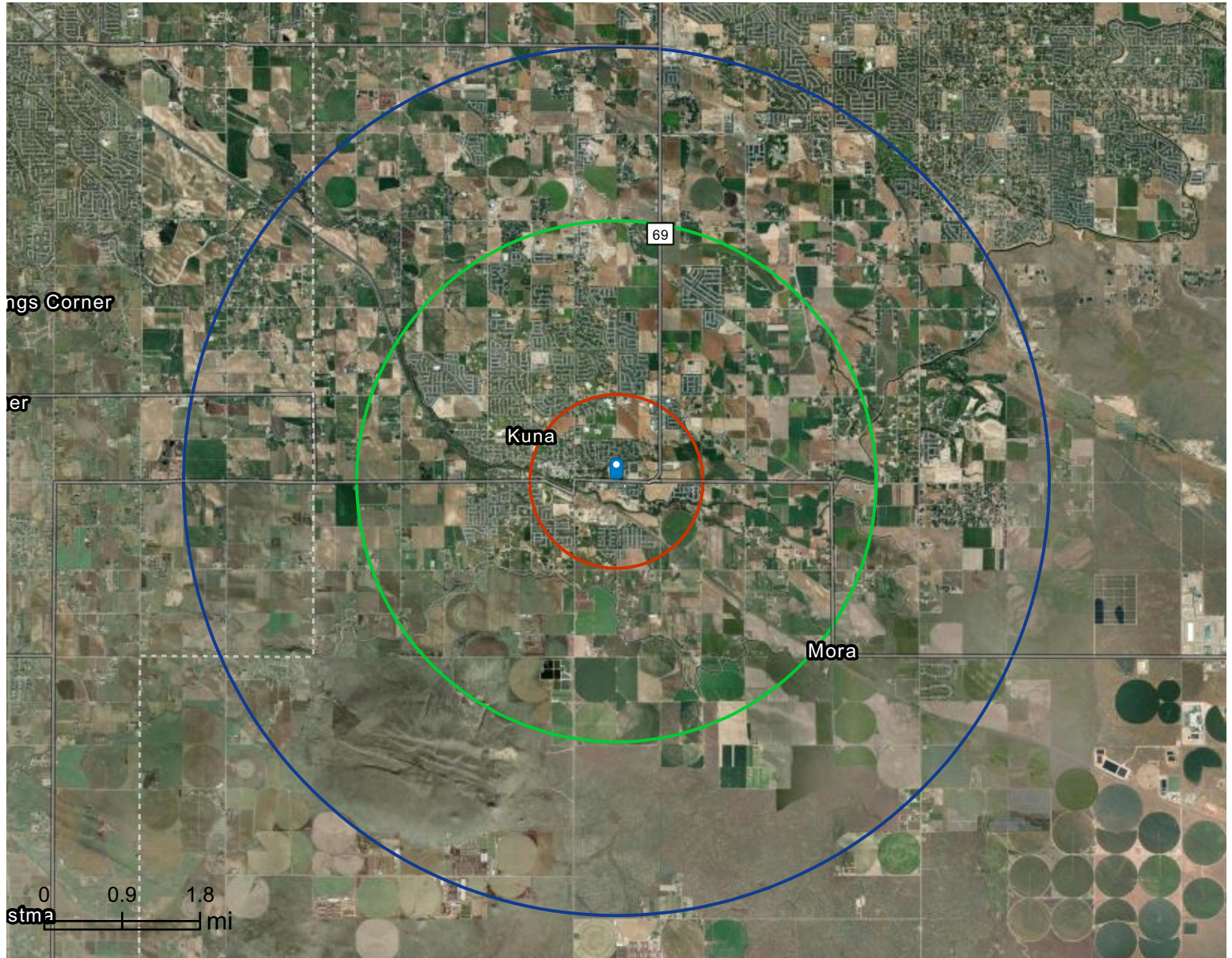


Site Map

1-223 Kay Ave
1-223 Kay Ave, Kuna, Idaho, 83634
Rings: 1, 3, 5 mile radii

Prepared by Esri



Executive Summary

1-223 Kay Ave
 1-223 Kay Ave, Kuna, Idaho, 83634
 Rings: 1, 3, 5 mile radii




Population	1 mile	3 miles	5 miles
2010 Population	5,315	17,484	22,343
2020 Population	6,432	25,171	31,908
2025 Population	6,971	30,820	41,331
2030 Population	7,213	34,253	47,481
2010-2020 Annual Rate	1.93%	3.71%	3.63%
2020-2025 Annual Rate	1.54%	3.93%	5.05%
2025-2030 Annual Rate	0.68%	2.13%	2.81%

Age	1 mile	3 miles	5 miles
2025 Median Age	32.9	33.2	34.5
U.S. median age is 39.1			

Race and Ethnicity	1 mile	3 miles	5 miles
White Alone	82.7%	83.2%	83.3%
Black Alone	0.4%	0.9%	1.0%
American Indian Alone	0.8%	0.7%	0.7%
Asian Alone	0.9%	1.1%	1.2%
Pacific Islander Alone	0.1%	0.2%	0.1%
Some Other Race Alone	5.4%	4.7%	4.6%
Two or More Races	9.7%	9.3%	8.9%
Hispanic Origin	13.4%	12.1%	11.8%
Diversity Index	46.5	44.6	44.2

Households	1 mile	3 miles	5 miles
2010 Total Households	1,717	5,529	7,166
2020 Total Households	2,131	8,118	10,406
2025 Total Households	2,406	10,295	13,899
2030 Total Households	2,529	11,590	16,354
2010-2020 Annual Rate	2.18%	3.92%	3.80%
2020-2025 Annual Rate	2.34%	4.63%	5.67%
2025-2030 Annual Rate	1.00%	2.40%	3.31%
2025 Average Household Size	2.89	2.98	2.87
Wealth Index	63	95	119

 **Source:** Esri forecasts for 2025 and 2030. U.S. Census 2010 and 2020 Census data converted by Esri into 2020 geography.

Mortgage Income	1 mile	3 miles	5 miles
2025 Percent of Income for Mortgage	31.6%	33.1%	33.5%

Median Household Income			
2025 Median Household Income	\$82,450	\$92,566	\$101,505
2030 Median Household Income	\$90,167	\$104,189	\$113,588
2025-2030 Annual Rate	1.81%	2.39%	2.27%


Average Household Income			
2025 Average Household Income	\$92,607	\$119,480	\$134,693
2030 Average Household Income	\$102,946	\$135,782	\$153,670

Per Capita Income			
2025 Per Capita Income	\$32,202	\$39,903	\$43,685
2030 Per Capita Income	\$36,356	\$46,015	\$50,663
2025-2030 Annual Rate	2.46%	2.89%	3.01%

Income Equality			
2025 Gini Index	35.0	40.3	41.5

Socioeconomic Status			
2025 Socioeconomic Status Index	53.3	55.0	56.1

Housing Unit Summary			
Housing Affordability Index	78	75	74
2010 Total Housing Units	1,845	5,904	7,625
2010 Owner Occupied Hus (%)	77.2%	80.8%	82.0%
2010 Renter Occupied Hus (%)	22.8%	19.2%	18.0%
2010 Vacant Housing Units (%)	6.9%	6.3%	6.0%
2020 Housing Units	2,176	8,347	10,712
2020 Owner Occupied HUs (%)	75.5%	81.3%	83.1%
2020 Renter Occupied HUs (%)	24.4%	18.7%	16.9%
Vacant Housing Units	1.7%	2.6%	2.7%
2025 Housing Units	2,436	10,497	14,203
Owner Occupied Housing Units	78.6%	85.5%	87.4%
Renter Occupied Housing Units	21.4%	14.5%	12.6%
Vacant Housing Units	1.2%	1.9%	2.1%
2030 Total Housing Units	2,563	11,899	16,881
2030 Owner Occupied Housing Units	2,035	10,103	14,605
2030 Renter Occupied Housing Units	494	1,487	1,749
2030 Vacant Housing Units	34	309	527

 **Source:** Esri forecasts for 2025 and 2030. U.S. Census 2010 and 2020 Census data converted by Esri into 2020 geography.

Business Summary Report (NAICS)

1-223 Kay Ave
 1-223 Kay Ave, Kuna, Idaho, 83634
 Rings: 1, 3, 5 mile radii



Data for all businesses in area	1 mile	3 miles	5 miles
Total Businesses	231	418	529
Total Employees	1,980	3,184	4,193
Total Population	6,971	30,820	41,331
Employee/Population Ratio (per 100)	28.4	10.3	10.1

by NAICS Codes	Businesses		Employees		Businesses		Employees		Businesses		Employees	
	Number	%	Number	%	Number	%	Number	%	Number	%	Number	%
Agriculture, Forestry, Fishing & Hunting (11)	1	0.4%	1	0.1%	6	1.4%	18	0.6%	10	1.9%	40	0.9%
Mining (21)	0	0.0%	0	0.0%	0	0.0%	0	0.0%	0	0.0%	0	0.0%
Utilities (22)	1	0.4%	19	1.0%	1	0.2%	22	0.7%	1	0.2%	22	0.5%
Construction (23)	11	4.8%	33	1.7%	41	9.8%	134	4.2%	68	12.8%	237	5.7%
Building Construction	5	2.2%	11	0.6%	15	3.6%	40	1.3%	23	4.3%	70	1.7%
Heavy/Civil Eng Construction	0	0.0%	0	0.0%	1	0.2%	2	0.1%	2	0.4%	14	0.3%
Specialty Trade Contractor	6	2.6%	22	1.1%	26	6.2%	92	2.9%	42	7.9%	153	3.6%
Manufacturing (31-33)	8	3.5%	38	1.9%	13	3.1%	68	2.1%	19	3.6%	108	2.6%
Wholesale Trade (42)	5	2.2%	35	1.8%	11	2.6%	65	2.0%	16	3.0%	112	2.7%
Durable Goods	3	1.3%	20	1.0%	7	1.7%	46	1.4%	10	1.9%	72	1.7%
Nondurable Goods	3	1.3%	15	0.8%	4	1.0%	19	0.6%	6	1.1%	38	0.9%
Trade Broker	0	0.0%	0	0.0%	0	0.0%	1	0.0%	1	0.2%	2	0.1%



Source: This infographic contains data provided by Esri-Data Axle (2025), Esri (2025). Data note: Not all NAICS subcategories for a 2 digit major category are being shown.

Business Summary Report (NAICS)

1-223 Kay Ave
 1-223 Kay Ave, Kuna, Idaho, 83634
 Rings: 1, 3, 5 mile radii



by NAICS Codes	1 mile				3 miles				5 miles			
	Businesses		Employees		Businesses		Employees		Businesses		Employees	
	Number	%	Number	%	Number	%	Number	%	Number	%	Number	%
Retail Trade (44-45)	31	13.4%	296	14.9%	49	11.7%	384	12.1%	57	10.8%	422	10.1%
Motor Vehicle & Parts Dealers	6	2.6%	41	2.1%	8	1.9%	49	1.5%	8	1.5%	51	1.2%
Furniture & Home Furnishing Stores	0	0.0%	0	0.0%	1	0.2%	2	0.1%	1	0.2%	2	0.1%
Electronics & Appliance Stores	1	0.4%	14	0.7%	2	0.5%	16	0.5%	3	0.6%	19	0.5%
Building & Garden Equipment	1	0.4%	1	0.1%	4	1.0%	25	0.8%	5	0.9%	42	1.0%
Food & Beverage Stores	5	2.2%	137	6.9%	7	1.7%	149	4.7%	8	1.5%	153	3.6%
Health & Personal Care Stores	3	1.3%	27	1.4%	3	0.7%	31	1.0%	3	0.6%	32	0.8%
Gasoline Stations	3	1.3%	17	0.9%	5	1.2%	34	1.1%	6	1.1%	36	0.9%
Clothing, Shoe and Jewellery Stores	2	0.9%	4	0.2%	3	0.7%	7	0.2%	5	0.9%	12	0.3%
Sporting Goods, Hobby & Music Stores	8	3.5%	24	1.2%	12	2.9%	34	1.1%	13	2.5%	39	0.9%
General Merchandise Stores	3	1.3%	32	1.6%	5	1.2%	36	1.1%	5	0.9%	37	0.9%
Transportation & Warehousing (48-49)	7	3.0%	82	4.1%	13	3.1%	108	3.4%	16	3.0%	117	2.8%
Truck Transportation	2	0.9%	57	2.9%	3	0.7%	67	2.1%	5	0.9%	71	1.7%
Information (51)	4	1.7%	60	3.0%	7	1.7%	76	2.4%	9	1.7%	79	1.9%
Finance & Insurance (52)	11	4.8%	41	2.1%	17	4.1%	60	1.9%	19	3.6%	66	1.6%
Central Bank/Credit & Related Activities	5	2.2%	23	1.2%	7	1.7%	33	1.0%	7	1.3%	34	0.8%
Securities & Commodity Contracts	0	0.0%	1	0.1%	1	0.2%	3	0.1%	3	0.6%	5	0.1%
Funds, Trusts & Other Financial	6	2.6%	17	0.9%	8	1.9%	25	0.8%	9	1.7%	27	0.6%
Real Estate, Rental & Leasing (53)	10	4.3%	28	1.4%	14	3.4%	39	1.2%	15	2.8%	43	1.0%
Professional, Scientific & Tech Services (54)	11	4.8%	57	2.9%	29	6.9%	107	3.4%	41	7.8%	152	3.6%
Legal Services	1	0.4%	3	0.1%	2	0.5%	6	0.2%	2	0.4%	6	0.1%



Source: This infographic contains data provided by Esri-Data Axle (2025), Esri (2025). Data note: Not all NAICS subcategories for a 2 digit major category are being shown.

Business Summary Report (NAICS)

1-223 Kay Ave
 1-223 Kay Ave, Kuna, Idaho, 83634
 Rings: 1, 3, 5 mile radii



by NAICS Codes	1 mile				3 miles				5 miles			
	Businesses		Employees		Businesses		Employees		Businesses		Employees	
	Number	%	Number	%	Number	%	Number	%	Number	%	Number	%
Management of Companies (55)	0	0.0%	0	0.0%	0	0.0%	0	0.0%	0	0.0%	0	0.0%
Administrative, Support & Waste Mgmt (56)	10	4.3%	33	1.7%	25	6.0%	90	2.8%	32	6.0%	123	2.9%
Educational Services (61)	15	6.5%	290	14.7%	23	5.5%	623	19.6%	25	4.7%	689	16.4%
Health Care & Social Assistance (62)	25	10.8%	209	10.6%	39	9.3%	325	10.2%	43	8.1%	379	9.0%
Ambulatory Health Care	17	7.4%	144	7.3%	25	6.0%	201	6.3%	28	5.3%	225	5.4%
Hospital	0	0.0%	0	0.0%	1	0.2%	13	0.4%	2	0.4%	29	0.7%
Nursing/Residential Care	1	0.4%	10	0.5%	1	0.2%	15	0.5%	1	0.2%	17	0.4%
Social Assistance	7	3.0%	55	2.8%	11	2.6%	96	3.0%	12	2.3%	108	2.6%
Arts, Entertainment & Recreation (71)	4	1.7%	23	1.2%	10	2.4%	55	1.7%	15	2.8%	96	2.3%
Accommodation & Food Services (72)	32	13.8%	485	24.5%	43	10.3%	598	18.8%	46	8.7%	622	14.8%
Accommodation	0	0.0%	0	0.0%	0	0.0%	1	0.0%	1	0.2%	2	0.1%
Food & Drinking Places	32	13.8%	485	24.5%	43	10.3%	597	18.8%	44	8.3%	619	14.8%
Other Services Except Public Admin (81)	29	12.6%	78	3.9%	49	11.7%	137	4.3%	60	11.3%	176	4.2%
Repair & Maintenance	10	4.3%	28	1.4%	14	3.4%	33	1.0%	16	3.0%	36	0.9%
Auto Repair & Maintenance	9	3.9%	24	1.2%	10	2.4%	27	0.8%	10	1.9%	28	0.7%
Personal & Laundry Service	10	4.3%	33	1.7%	15	3.6%	55	1.7%	16	3.0%	58	1.4%
Civic and Other Orgs	9	3.9%	17	0.9%	20	4.8%	49	1.5%	28	5.3%	82	2.0%
Public Administration (92)	8	3.5%	169	8.5%	10	2.4%	269	8.4%	13	2.5%	702	16.7%
Unclassified Establishments (99)	7	3.0%	4	0.2%	18	4.3%	5	0.2%	24	4.5%	6	0.1%
Total (11-99)	231	100.0%	1,980	100.0%	418	100.0%	3,184	100.0%	529	100.0%	4,193	100.0%



Source: This infographic contains data provided by Esri-Data Axle (2025), Esri (2025). Data note: Not all NAICS subcategories for a 2 digit major category are being shown.

Business Summary Report (SIC)

1-223 Kay Ave
 1-223 Kay Ave, Kuna, Idaho, 83634
 Rings: 1, 3, 5 mile radii



Data for all businesses in area	1 mile	3 miles	5 miles
Total Businesses	231	418	529
Total Employees	1,980	3,184	4,193
Total Population	6,971	30,820	41,331
Employee/Population Ratio (per 100)	28.4	10.3	10.1

by SIC Codes	Businesses		Employees		Businesses		Employees		Businesses		Employees	
	Number	%	Number	%	Number	%	Number	%	Number	%	Number	%
Agriculture & Mining (01-14)	9	3.9%	35	1.8%	21	5.0%	88	2.8%	31	5.9%	140	3.3%
Construction (15-17)	11	4.8%	33	1.7%	41	9.8%	125	3.9%	67	12.7%	217	5.2%
Manufacturing (20-39)	5	2.2%	33	1.7%	10	2.4%	63	2.0%	15	2.8%	102	2.4%
Transportation (40-47)	9	3.9%	79	4.0%	14	3.4%	105	3.3%	18	3.4%	118	2.8%
Communication (48)	1	0.4%	1	0.1%	2	0.5%	7	0.2%	3	0.6%	8	0.2%
Utility (49)	2	0.9%	25	1.3%	3	0.7%	32	1.0%	3	0.6%	32	0.8%
Wholesale Trade (50-51)	5	2.2%	35	1.8%	11	2.6%	65	2.0%	16	3.0%	112	2.7%
Retail Trade Summary (52-59)	66	28.6%	788	39.8%	96	23.0%	990	31.1%	106	20.0%	1,051	25.1%
Home Improvement	1	0.4%	1	0.1%	4	1.0%	25	0.8%	5	0.9%	42	1.0%
General Merchandise Stores	3	1.3%	32	1.6%	3	0.7%	32	1.0%	3	0.6%	32	0.8%
Food Stores	7	3.0%	138	7.0%	9	2.1%	151	4.7%	10	1.9%	155	3.7%
Auto Dealers & Gas Stations	9	3.9%	58	2.9%	13	3.1%	84	2.6%	14	2.6%	87	2.1%
Apparel & Accessory Stores	2	0.9%	4	0.2%	3	0.7%	7	0.2%	5	0.9%	12	0.3%
Furniture & Home Furnishings	2	0.9%	16	0.8%	4	1.0%	21	0.7%	5	0.9%	23	0.6%
Eating & Drinking Places	31	13.4%	482	24.3%	41	9.8%	592	18.6%	42	7.9%	612	14.6%
Miscellaneous Retail	13	5.6%	58	2.9%	19	4.5%	78	2.5%	22	4.2%	88	2.1%

Source: This infographic contains data provided by Esri-Data Axle (2025), Esri (2025).

Business Summary Report (SIC)

1-223 Kay Ave
 1-223 Kay Ave, Kuna, Idaho, 83634
 Rings: 1, 3, 5 mile radii



by SIC Codes	1 mile				3 miles				5 miles			
	Businesses		Employees		Businesses		Employees		Businesses		Employees	
	Number	%	Number	%	Number	%	Number	%	Number	%	Number	%
Finance, Insurance, Real Estate (60-67)	17	7.4%	60	3.0%	25	6.0%	87	2.7%	28	5.3%	96	2.3%
Banks, Savings & Lending	5	2.2%	23	1.2%	7	1.7%	33	1.0%	7	1.3%	34	0.8%
Securities Brokers	0	0.0%	1	0.1%	1	0.2%	3	0.1%	2	0.4%	4	0.1%
Insurance Carriers & Agents	6	2.6%	17	0.9%	8	1.9%	25	0.8%	9	1.7%	27	0.6%
Real Estate, Investment Offices	6	2.6%	19	1.0%	8	1.9%	27	0.8%	10	1.9%	31	0.7%
Services Summary (70-89)	91	39.4%	718	36.3%	166	39.7%	1,349	42.4%	204	38.6%	1,609	38.4%
Hotels & Lodging	0	0.0%	0	0.0%	0	0.0%	1	0.0%	1	0.2%	2	0.1%
Automotive Services	10	4.3%	33	1.7%	13	3.1%	39	1.2%	13	2.5%	40	0.9%
Movies & Amusements	7	3.0%	28	1.4%	12	2.9%	57	1.8%	15	2.8%	92	2.2%
Health Services	18	7.8%	154	7.8%	28	6.7%	229	7.2%	31	5.9%	271	6.5%
Legal Services	1	0.4%	3	0.1%	1	0.2%	4	0.1%	1	0.2%	4	0.1%
Education Inst. & Libraries	14	6.1%	320	16.2%	22	5.3%	659	20.7%	24	4.5%	725	17.3%
Other Services	41	17.8%	180	9.1%	90	21.5%	360	11.3%	118	22.3%	475	11.3%
Government (91-97)	8	3.5%	169	8.5%	10	2.4%	269	8.4%	13	2.5%	702	16.7%
Unclassified Establishments (99)	7	3.0%	4	0.2%	18	4.3%	5	0.2%	24	4.5%	6	0.1%
Totals (01-99)	231	100.0%	1,980	100.0%	418	100.0%	3,184	100.0%	529	100.0%	4,193	100.0%



Source: This infographic contains data provided by Esri-Data Axle (2025), Esri (2025).