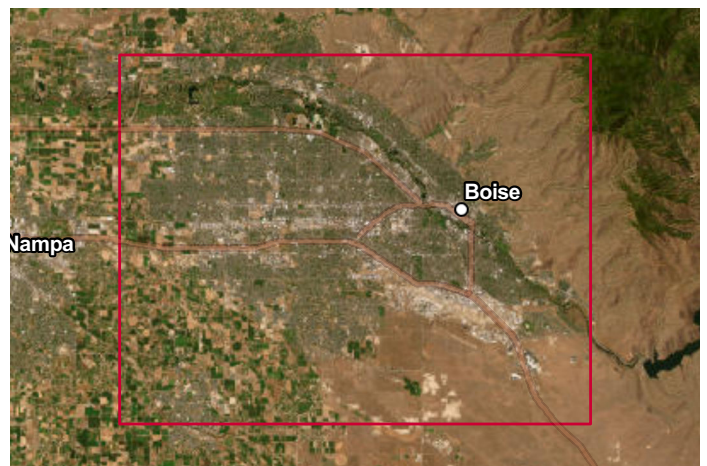
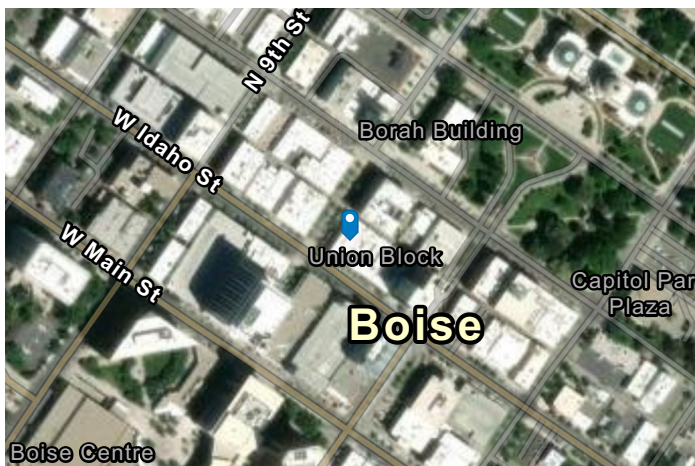
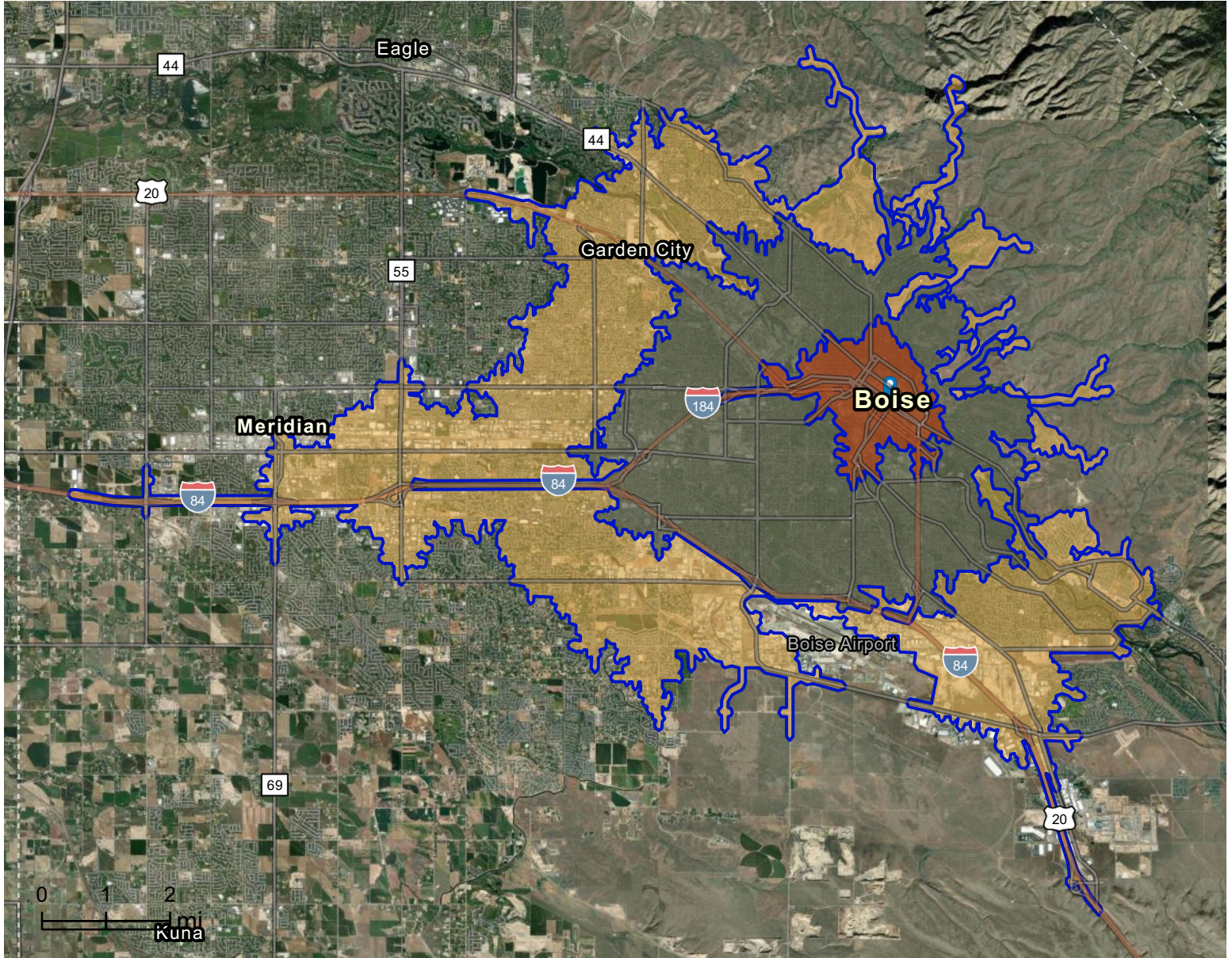


# Site Map

242 N 8th St, Boise, Idaho, 83702

Drive time: 5, 10, 15 minute radii

Prepared by Esri  
Latitude: 43.61649  
Longitude: -116.20227



# Executive Summary

242 N 8th St, Boise, Idaho, 83702



Drive time: 5, 10, 15 minute radii

Population	5 minutes	10 minutes	15 minutes
2010 Population	12,968	102,021	185,916
2020 Population	15,710	112,860	208,929
2025 Population	17,690	116,535	216,838
2030 Population	20,681	122,797	228,855
2010-2020 Annual Rate	1.94%	1.01%	1.17%
2020-2025 Annual Rate	2.29%	0.61%	0.71%
2025-2030 Annual Rate	3.17%	1.05%	1.08%


Age	5 minutes	10 minutes	15 minutes
2025 Median Age	33.1	35.8	38.0
U.S. median age is 39.1			

Race and Ethnicity	5 minutes	10 minutes	15 minutes
White Alone	79.7%	78.7%	79.2%
Black Alone	2.8%	2.9%	2.5%
American Indian Alone	0.7%	0.8%	0.7%
Asian Alone	3.7%	3.2%	3.5%
Pacific Islander Alone	0.2%	0.3%	0.3%
Some Other Race Alone	3.9%	4.9%	4.5%
Two or More Races	9.1%	9.2%	9.3%
Hispanic Origin	9.8%	11.2%	10.9%
Diversity Index	46.8	49.4	48.5

Households	5 minutes	10 minutes	15 minutes
2010 Total Households	7,126	46,236	79,682
2020 Total Households	8,122	50,054	88,627
2025 Total Households	9,476	53,167	94,392
2030 Total Households	11,536	57,302	101,294
2010-2020 Annual Rate	1.32%	0.80%	1.07%
2020-2025 Annual Rate	2.98%	1.16%	1.21%
2025-2030 Annual Rate	4.01%	1.51%	1.42%
2025 Average Household Size	1.70	2.09	2.23
Wealth Index	62	80	96

 **Source:** Esri forecasts for 2025 and 2030. U.S. Census 2010 and 2020 Census data converted by Esri into 2020 geography.

<b>Mortgage Income</b>	<b>5 minutes</b>	<b>10 minutes</b>	<b>15 minutes</b>
2025 Percent of Income for Mortgage	66.4%	48.0%	42.6%
<b>Median Household Income</b>			
2025 Median Household Income	\$61,605	\$73,751	\$82,105
2030 Median Household Income	\$74,187	\$83,344	\$93,892
2025-2030 Annual Rate	3.79%	2.48%	2.72%
<b>Average Household Income</b>			
2025 Average Household Income	\$93,468	\$105,808	\$115,680
2030 Average Household Income	\$108,973	\$117,474	\$128,468
<b>Per Capita Income</b>			
2025 Per Capita Income	\$48,363	\$48,462	\$50,445
2030 Per Capita Income	\$59,023	\$55,008	\$57,023
2025-2030 Annual Rate	4.06%	2.57%	2.48%
<b>Income Equality</b>			
2025 Gini Index	52.2	46.4	45.3
<b>Socioeconomic Status</b>			
2025 Socioeconomic Status Index	51.2	49.8	52.4
<b>Housing Unit Summary</b>			
Housing Affordability Index	38	52	59
2010 Total Housing Units	8,079	50,735	86,444
2010 Owner Occupied Hus (%)	30.1%	48.4%	58.7%
2010 Renter Occupied Hus (%)	69.9%	51.6%	41.3%
2010 Vacant Housing Units (%)	11.8%	8.9%	7.8%
2020 Housing Units	8,905	53,363	93,536
2020 Owner Occupied HUs (%)	30.2%	48.5%	58.0%
2020 Renter Occupied HUs (%)	69.8%	51.5%	42.0%
Vacant Housing Units	8.8%	6.1%	5.2%
2025 Housing Units	10,266	56,348	99,059
Owner Occupied Housing Units	28.8%	49.6%	59.1%
Renter Occupied Housing Units	71.2%	50.4%	40.9%
Vacant Housing Units	7.7%	5.7%	4.7%
2030 Total Housing Units	12,279	60,412	105,954
2030 Owner Occupied Housing Units	2,963	28,173	60,068
2030 Renter Occupied Housing Units	8,573	29,129	41,226
2030 Vacant Housing Units	743	3,110	4,660

# Business Summary Report (NAICS)

242 N 8th St, Boise, Idaho, 83702



Drive time: 5, 10, 15 minute radii

Data for all businesses in area	5 minutes	10 minutes	15 minutes
Total Businesses	3,460	8,554	13,687
Total Employees	56,300	121,498	188,981
Total Population	17,690	116,535	216,838
Employee/Population Ratio (per 100)	318.3	104.3	87.2

by NAICS Codes	Businesses		Employees		Businesses		Employees		Businesses		Employees	
	Number	%	Number	%	Number	%	Number	%	Number	%	Number	%
Agriculture, Forestry, Fishing & Hunting (11)	16	0.5%	90	0.2%	35	0.4%	175	0.1%	62	0.5%	291	0.1%
Mining (21)	6	0.2%	65	0.1%	11	0.1%	84	0.1%	15	0.1%	100	0.1%
Utilities (22)	11	0.3%	1,526	2.7%	18	0.2%	1,570	1.3%	29	0.2%	1,700	0.9%
Construction (23)	146	4.2%	812	1.4%	505	5.9%	3,519	2.9%	994	7.3%	7,645	4.0%
Building Construction	66	1.9%	305	0.5%	187	2.2%	1,000	0.8%	342	2.5%	2,097	1.1%
Heavy/Civil Eng Construction	21	0.6%	150	0.3%	42	0.5%	387	0.3%	73	0.5%	986	0.5%
Specialty Trade Contractor	59	1.7%	357	0.6%	277	3.2%	2,133	1.8%	579	4.2%	4,562	2.4%
Manufacturing (31-33)	81	2.3%	2,867	5.1%	270	3.2%	5,901	4.9%	497	3.6%	10,454	5.5%
Wholesale Trade (42)	59	1.7%	1,565	2.8%	220	2.6%	3,363	2.8%	443	3.2%	7,458	4.0%
Durable Goods	39	1.1%	1,312	2.3%	169	2.0%	2,599	2.1%	348	2.5%	5,126	2.7%
Nondurable Goods	17	0.5%	121	0.2%	41	0.5%	532	0.4%	81	0.6%	1,858	1.0%
Trade Broker	3	0.1%	131	0.2%	10	0.1%	232	0.2%	15	0.1%	475	0.3%



**Source:** This infographic contains data provided by Esri-Data Axle (2025), Esri (2025). Data note: Not all NAICS subcategories for a 2 digit major category are being shown.

# Business Summary Report (NAICS)

242 N 8th St, Boise, Idaho, 83702



Drive time: 5, 10, 15 minute radii

by NAICS Codes	5 minutes				10 minutes				15 minutes			
	Businesses		Employees		Businesses		Employees		Businesses		Employees	
	Number	%	Number	%	Number	%	Number	%	Number	%	Number	%
Retail Trade (44-45)	251	7.3%	2,151	3.8%	956	11.2%	14,054	11.6%	1,596	11.7%	23,773	12.6%
Motor Vehicle & Parts Dealers	23	0.7%	199	0.3%	138	1.6%	1,451	1.2%	232	1.7%	4,051	2.1%
Furniture & Home Furnishing Stores	11	0.3%	137	0.2%	52	0.6%	561	0.5%	88	0.6%	887	0.5%
Electronics & Appliance Stores	9	0.3%	49	0.1%	29	0.3%	300	0.3%	50	0.4%	545	0.3%
Building & Garden Equipment	14	0.4%	70	0.1%	63	0.7%	873	0.7%	130	0.9%	1,956	1.0%
Food & Beverage Stores	39	1.1%	843	1.5%	141	1.6%	6,233	5.1%	222	1.6%	7,894	4.2%
Health & Personal Care Stores	16	0.5%	111	0.2%	71	0.8%	474	0.4%	124	0.9%	833	0.4%
Gasoline Stations	8	0.2%	76	0.1%	35	0.4%	261	0.2%	59	0.4%	495	0.3%
Clothing, Shoe and Jewellery Stores	36	1.0%	168	0.3%	122	1.4%	1,017	0.8%	174	1.3%	1,476	0.8%
Sporting Goods, Hobby & Music Stores	67	1.9%	352	0.6%	209	2.4%	1,399	1.1%	334	2.4%	2,476	1.3%
General Merchandise Stores	29	0.8%	146	0.3%	96	1.1%	1,486	1.2%	183	1.3%	3,160	1.7%
Transportation & Warehousing (48-49)	41	1.2%	366	0.7%	126	1.5%	953	0.8%	233	1.7%	2,304	1.2%
Truck Transportation	4	0.1%	21	0.0%	41	0.5%	289	0.2%	78	0.6%	722	0.4%
Information (51)	101	2.9%	2,050	3.6%	202	2.4%	3,408	2.8%	297	2.2%	5,152	2.7%
Finance & Insurance (52)	209	6.0%	1,695	3.0%	453	5.3%	3,205	2.6%	752	5.5%	5,632	3.0%
Central Bank/Credit & Related Activities	59	1.7%	667	1.2%	153	1.8%	1,285	1.1%	271	2.0%	2,235	1.2%
Securities & Commodity Contracts	104	3.0%	670	1.2%	170	2.0%	874	0.7%	255	1.9%	1,241	0.7%
Funds, Trusts & Other Financial	46	1.3%	358	0.6%	130	1.5%	1,046	0.9%	226	1.6%	2,156	1.1%
Real Estate, Rental & Leasing (53)	203	5.9%	1,597	2.8%	434	5.1%	3,668	3.0%	730	5.3%	6,307	3.3%
Professional, Scientific & Tech Services (54)	635	18.4%	5,435	9.7%	1,169	13.7%	11,845	9.8%	1,618	11.8%	15,444	8.2%
Legal Services	255	7.4%	1,697	3.0%	345	4.0%	2,212	1.8%	400	2.9%	2,571	1.4%



**Source:** This infographic contains data provided by Esri-Data Axle (2025), Esri (2025). Data note: Not all NAICS subcategories for a 2 digit major category are being shown.

# Business Summary Report (NAICS)

242 N 8th St, Boise, Idaho, 83702



Drive time: 5, 10, 15 minute radii

by NAICS Codes	5 minutes				10 minutes				15 minutes			
	Businesses		Employees		Businesses		Employees		Businesses		Employees	
	Number	%	Number	%	Number	%	Number	%	Number	%	Number	%
Management of Companies (55)	16	0.5%	145	0.3%	26	0.3%	175	0.1%	39	0.3%	238	0.1%
Administrative, Support & Waste Mgmt (56)	112	3.2%	1,472	2.6%	286	3.3%	2,925	2.4%	500	3.6%	4,495	2.4%
Educational Services (61)	64	1.9%	898	1.6%	168	2.0%	3,117	2.6%	288	2.1%	5,960	3.1%
Health Care & Social Assistance (62)	405	11.7%	17,412	30.9%	1,088	12.7%	29,160	24.0%	1,717	12.5%	38,681	20.5%
Amulatory Health Care	282	8.2%	6,813	12.1%	744	8.7%	14,317	11.8%	1,174	8.6%	20,140	10.7%
Hospital	31	0.9%	9,652	17.1%	72	0.8%	11,203	9.2%	107	0.8%	12,165	6.4%
Nursing/Residential Care	9	0.3%	139	0.3%	37	0.4%	1,327	1.1%	77	0.6%	2,849	1.5%
Social Assistance	83	2.4%	807	1.4%	235	2.8%	2,312	1.9%	358	2.6%	3,527	1.9%
Arts, Entertainment & Recreation (71)	70	2.0%	731	1.3%	165	1.9%	1,534	1.3%	258	1.9%	2,239	1.2%
Accommodation & Food Services (72)	247	7.1%	4,648	8.3%	593	6.9%	12,387	10.2%	915	6.7%	20,795	11.0%
Accommodation	35	1.0%	1,007	1.8%	76	0.9%	1,963	1.6%	105	0.8%	2,518	1.3%
Food & Drinking Places	211	6.1%	3,641	6.5%	517	6.0%	10,424	8.6%	810	5.9%	18,277	9.7%
Other Services Except Public Admin (81)	369	10.7%	1,974	3.5%	1,077	12.6%	5,601	4.6%	1,644	12.0%	8,728	4.6%
Repair & Maintenance	45	1.3%	217	0.4%	222	2.6%	1,114	0.9%	368	2.7%	2,028	1.1%
Auto Repair & Maintenance	35	1.0%	136	0.2%	169	2.0%	766	0.6%	274	2.0%	1,401	0.7%
Personal & Laundry Service	111	3.2%	654	1.2%	353	4.1%	1,844	1.5%	563	4.1%	3,015	1.6%
Civic and Other Orgs	212	6.1%	1,102	2.0%	501	5.9%	2,643	2.2%	713	5.2%	3,684	1.9%
Public Administration (92)	205	5.9%	8,761	15.6%	320	3.7%	14,780	12.2%	407	3.0%	21,451	11.3%
Unclassified Establishments (99)	212	6.1%	41	0.1%	434	5.1%	73	0.1%	653	4.8%	132	0.1%
<b>Total (11-99)</b>	<b>3,460</b>	<b>100.0%</b>	<b>56,300</b>	<b>100.0%</b>	<b>8,554</b>	<b>100.0%</b>	<b>121,498</b>	<b>100.0%</b>	<b>13,687</b>	<b>100.0%</b>	<b>188,981</b>	<b>100.0%</b>



**Source:** This infographic contains data provided by Esri-Data Axle (2025), Esri (2025). Data note: Not all NAICS subcategories for a 2 digit major category are being shown.

# Business Summary Report (SIC)

242 N 8th St, Boise, Idaho, 83702



Drive time: 5, 10, 15 minute radii

Data for all businesses in area	5 minutes	10 minutes	15 minutes
Total Businesses	3,460	8,554	13,687
Total Employees	56,300	121,498	188,981
Total Population	17,690	116,535	216,838
Employee/Population Ratio (per 100)	318.3	104.3	87.2

by SIC Codes	Businesses		Employees		Businesses		Employees		Businesses		Employees	
	Number	%	Number	%	Number	%	Number	%	Number	%	Number	%
Agriculture & Mining (01-14)	40	1.2%	293	0.5%	153	1.8%	1,057	0.9%	274	2.0%	1,873	1.0%
Construction (15-17)	122	3.5%	661	1.2%	456	5.3%	3,228	2.7%	908	6.6%	7,060	3.7%
Manufacturing (20-39)	81	2.3%	2,942	5.2%	256	3.0%	6,000	4.9%	455	3.3%	11,052	5.8%
Transportation (40-47)	58	1.7%	548	1.0%	162	1.9%	1,266	1.0%	293	2.1%	3,210	1.7%
Communication (48)	34	1.0%	1,204	2.1%	74	0.9%	1,724	1.4%	107	0.8%	1,963	1.0%
Utility (49)	18	0.5%	1,688	3.0%	36	0.4%	1,803	1.5%	54	0.4%	2,095	1.1%
Wholesale Trade (50-51)	59	1.7%	1,566	2.8%	222	2.6%	3,376	2.8%	448	3.3%	7,480	4.0%
Retail Trade Summary (52-59)	472	13.6%	5,837	10.4%	1,505	17.6%	24,655	20.3%	2,474	18.1%	42,425	22.4%
Home Improvement	15	0.4%	71	0.1%	65	0.8%	877	0.7%	132	1.0%	1,958	1.0%
General Merchandise Stores	15	0.4%	113	0.2%	42	0.5%	1,313	1.1%	78	0.6%	2,619	1.4%
Food Stores	46	1.3%	891	1.6%	156	1.8%	6,383	5.3%	257	1.9%	8,234	4.4%
Auto Dealers & Gas Stations	31	0.9%	275	0.5%	171	2.0%	1,698	1.4%	287	2.1%	4,526	2.4%
Apparel & Accessory Stores	26	0.8%	124	0.2%	97	1.1%	885	0.7%	135	1.0%	1,269	0.7%
Furniture & Home Furnishings	20	0.6%	203	0.4%	88	1.0%	945	0.8%	167	1.2%	1,635	0.9%
Eating & Drinking Places	206	6.0%	3,595	6.4%	504	5.9%	10,298	8.5%	787	5.8%	18,044	9.6%
Miscellaneous Retail	112	3.2%	565	1.0%	382	4.5%	2,256	1.9%	630	4.6%	4,139	2.2%

**Source:** This infographic contains data provided by Esri-Data Axle (2025), Esri (2025).

# Business Summary Report (SIC)

242 N 8th St, Boise, Idaho, 83702



Drive time: 5, 10, 15 minute radii

by SIC Codes	5 minutes				10 minutes				15 minutes			
	Businesses		Employees		Businesses		Employees		Businesses		Employees	
	Number	%	Number	%	Number	%	Number	%	Number	%	Number	%
Finance, Insurance, Real Estate (60-67)	445	12.9%	3,523	6.3%	908	10.6%	7,210	5.9%	1,478	10.8%	12,027	6.4%
Banks, Savings & Lending	59	1.7%	664	1.2%	162	1.9%	1,346	1.1%	281	2.0%	2,333	1.2%
Securities Brokers	95	2.8%	608	1.1%	156	1.8%	773	0.6%	236	1.7%	1,086	0.6%
Insurance Carriers & Agents	46	1.3%	358	0.6%	130	1.5%	1,046	0.9%	226	1.6%	2,156	1.1%
Real Estate, Investment Offices	245	7.1%	1,893	3.4%	461	5.4%	4,045	3.3%	735	5.4%	6,451	3.4%
Services Summary (70-89)	1,716	49.6%	29,256	52.0%	4,030	47.1%	56,385	46.4%	6,139	44.9%	78,317	41.4%
Hotels & Lodging	35	1.0%	1,007	1.8%	76	0.9%	1,963	1.6%	105	0.8%	2,518	1.3%
Automotive Services	46	1.3%	294	0.5%	205	2.4%	1,041	0.9%	340	2.5%	1,971	1.0%
Movies & Amusements	77	2.2%	750	1.3%	187	2.2%	1,660	1.4%	311	2.3%	2,817	1.5%
Health Services	313	9.1%	16,461	29.2%	823	9.6%	26,292	21.6%	1,300	9.5%	33,539	17.8%
Legal Services	242	7.0%	1,609	2.9%	323	3.8%	1,929	1.6%	370	2.7%	2,164	1.1%
Education Inst. & Libraries	55	1.6%	942	1.7%	138	1.6%	3,082	2.5%	228	1.7%	5,674	3.0%
Other Services	948	27.4%	8,194	14.6%	2,279	26.6%	20,418	16.8%	3,486	25.5%	29,633	15.7%
Government (91-97)	204	5.9%	8,739	15.5%	317	3.7%	14,721	12.1%	404	3.0%	21,347	11.3%
Unclassified Establishments (99)	212	6.1%	41	0.1%	434	5.1%	73	0.1%	653	4.8%	132	0.1%
Totals (01-99)	3,460	100.0%	56,300	100.0%	8,554	100.0%	121,498	100.0%	13,687	100.0%	188,981	100.0%



**Source:** This infographic contains data provided by Esri-Data Axle (2025), Esri (2025).