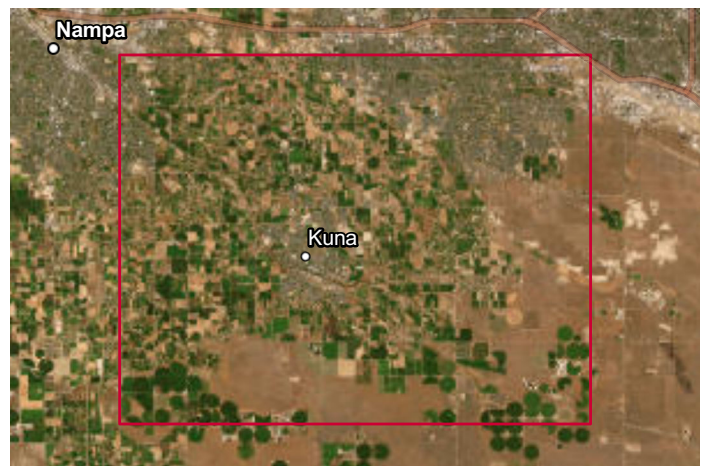
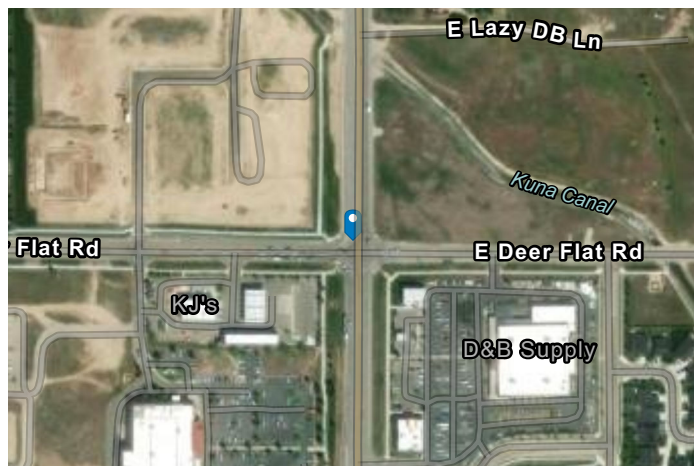
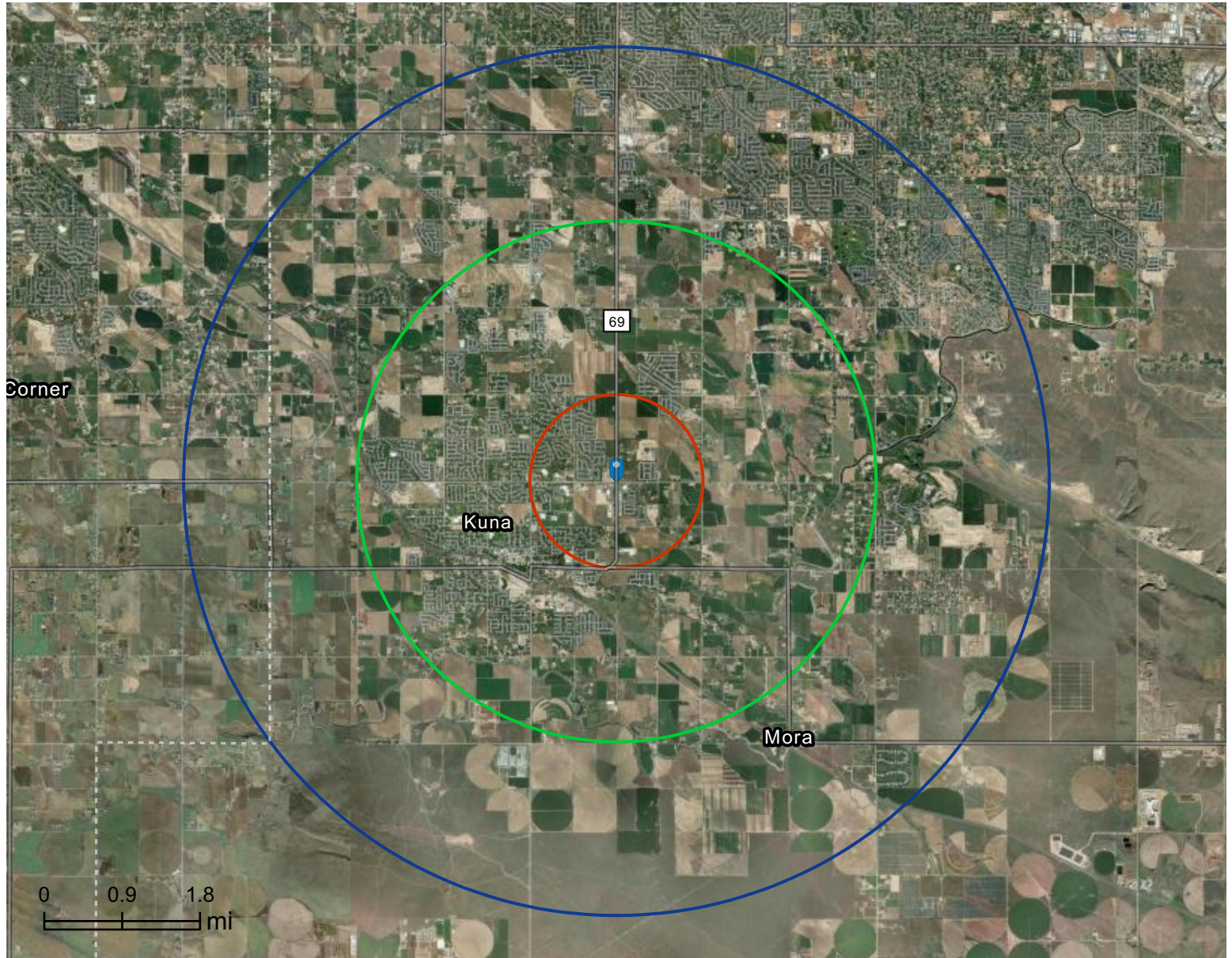


Site Map

1801-1801 N Meridian Rd
1801-1801 N Meridian Rd, Kuna, Idaho, 83634
Rings: 1, 3, 5 mile radii

Prepared by Esri
Latitude: 43.50291
Longitude: -116.39395



Executive Summary

1801-1801 N Meridian Rd
 1801-1801 N Meridian Rd, Kuna, Idaho, 83634
 Rings: 1, 3, 5 mile radii




Population	1 mile	3 miles	5 miles
2010 Population	3,569	17,887	32,904
2020 Population	4,482	25,855	52,235
2025 Population	6,211	31,834	66,584
2030 Population	6,900	35,762	75,000
2010-2020 Annual Rate	2.30%	3.75%	4.73%
2020-2025 Annual Rate	6.41%	4.04%	4.73%
2025-2030 Annual Rate	2.13%	2.35%	2.41%

Age	1 mile	3 miles	5 miles
2025 Median Age	32.7	33.3	35.5
U.S. median age is 39.1			

Race and Ethnicity	1 mile	3 miles	5 miles
White Alone	81.5%	83.3%	82.8%
Black Alone	0.9%	0.9%	1.0%
American Indian Alone	0.7%	0.7%	0.6%
Asian Alone	1.1%	1.1%	2.2%
Pacific Islander Alone	0.1%	0.1%	0.2%
Some Other Race Alone	5.8%	4.6%	3.8%
Two or More Races	10.0%	9.3%	9.3%
Hispanic Origin	13.6%	12.0%	10.8%
Diversity Index	48.2	44.5	43.7

Households	1 mile	3 miles	5 miles
2010 Total Households	1,107	5,677	10,644
2020 Total Households	1,465	8,370	17,350
2025 Total Households	2,130	10,682	22,707
2030 Total Households	2,406	12,180	26,054
2010-2020 Annual Rate	2.84%	3.96%	5.01%
2020-2025 Annual Rate	7.39%	4.76%	5.26%
2025-2030 Annual Rate	2.47%	2.66%	2.79%
2025 Average Household Size	2.92	2.96	2.87
Wealth Index	68	97	126

 **Source:** Esri forecasts for 2025 and 2030. U.S. Census 2010 and 2020 Census data converted by Esri into 2020 geography.

Mortgage Income	1 mile	3 miles	5 miles
2025 Percent of Income for Mortgage	36.0%	33.1%	34.5%

Median Household Income			
2025 Median Household Income	\$82,454	\$93,414	\$105,957
2030 Median Household Income	\$91,883	\$105,262	\$120,395
2025-2030 Annual Rate	2.19%	2.42%	2.59%


Average Household Income			
2025 Average Household Income	\$93,867	\$120,786	\$142,064
2030 Average Household Income	\$103,246	\$138,048	\$161,490

Per Capita Income			
2025 Per Capita Income	\$31,305	\$40,200	\$47,382
2030 Per Capita Income	\$34,947	\$46,604	\$54,617
2025-2030 Annual Rate	2.23%	3.00%	2.88%

Income Equality			
2025 Gini Index	34.5	40.5	41.6

Socioeconomic Status			
2025 Socioeconomic Status Index	59.4	55.1	59.2

Housing Unit Summary			
Housing Affordability Index	69	75	72
2010 Total Housing Units	1,183	6,059	11,256
2010 Owner Occupied Hus (%)	80.5%	80.9%	82.9%
2010 Renter Occupied Hus (%)	19.5%	19.1%	17.1%
2010 Vacant Housing Units (%)	6.4%	6.3%	5.4%
2020 Housing Units	1,490	8,601	17,971
2020 Owner Occupied HUs (%)	78.8%	81.6%	84.3%
2020 Renter Occupied HUs (%)	21.2%	18.4%	15.7%
Vacant Housing Units	1.7%	2.6%	3.6%
2025 Housing Units	2,165	10,883	23,389
Owner Occupied Housing Units	83.8%	85.8%	88.3%
Renter Occupied Housing Units	16.2%	14.2%	11.7%
Vacant Housing Units	1.6%	1.9%	2.9%
2030 Total Housing Units	2,450	12,513	26,971
2030 Owner Occupied Housing Units	2,062	10,675	23,388
2030 Renter Occupied Housing Units	344	1,506	2,666
2030 Vacant Housing Units	44	333	917

 **Source:** Esri forecasts for 2025 and 2030. U.S. Census 2010 and 2020 Census data converted by Esri into 2020 geography.

Business Summary Report (NAICS)

1801-1801 N Meridian Rd
 1801-1801 N Meridian Rd, Kuna, Idaho, 83634
 Rings: 1, 3, 5 mile radii



Data for all businesses in area	1 mile	3 miles	5 miles
Total Businesses	96	453	738
Total Employees	927	3,408	5,292
Total Population	6,211	31,834	66,584
Employee/Population Ratio (per 100)	14.9	10.7	7.9

by NAICS Codes	Businesses		Employees		Businesses		Employees		Businesses		Employees	
	Number	%	Number	%	Number	%	Number	%	Number	%	Number	%
Agriculture, Forestry, Fishing & Hunting (11)	0	0.0%	0	0.0%	6	1.3%	18	0.5%	11	1.5%	39	0.7%
Mining (21)	0	0.0%	0	0.0%	0	0.0%	0	0.0%	0	0.0%	0	0.0%
Utilities (22)	0	0.0%	0	0.0%	1	0.2%	22	0.7%	1	0.1%	22	0.4%
Construction (23)	9	9.4%	24	2.6%	50	11.0%	205	6.0%	102	13.8%	375	7.1%
Building Construction	3	3.1%	7	0.8%	15	3.3%	45	1.3%	34	4.6%	101	1.9%
Heavy/Civil Eng Construction	0	0.0%	0	0.0%	1	0.2%	3	0.1%	3	0.4%	18	0.3%
Specialty Trade Contractor	6	6.3%	17	1.8%	34	7.5%	157	4.6%	66	8.9%	256	4.8%
Manufacturing (31-33)	1	1.0%	4	0.4%	13	2.9%	65	1.9%	20	2.7%	110	2.1%
Wholesale Trade (42)	2	2.1%	16	1.7%	12	2.6%	77	2.3%	17	2.3%	113	2.1%
Durable Goods	1	1.0%	10	1.1%	8	1.8%	56	1.6%	11	1.5%	76	1.4%
Nondurable Goods	1	1.0%	6	0.7%	4	0.9%	21	0.6%	6	0.8%	37	0.7%
Trade Broker	0	0.0%	0	0.0%	0	0.0%	0	0.0%	0	0.0%	0	0.0%



Source: This infographic contains data provided by Esri-Data Axle (2025), Esri (2025). Data note: Not all NAICS subcategories for a 2 digit major category are being shown.

Business Summary Report (NAICS)

1801-1801 N Meridian Rd
 1801-1801 N Meridian Rd, Kuna, Idaho, 83634
 Rings: 1, 3, 5 mile radii



by NAICS Codes	1 mile				3 miles				5 miles			
	Businesses		Employees		Businesses		Employees		Businesses		Employees	
	Number	%	Number	%	Number	%	Number	%	Number	%	Number	%
Retail Trade (44-45)	14	14.6%	161	17.4%	49	10.8%	390	11.4%	73	9.9%	624	11.8%
Motor Vehicle & Parts Dealers	3	3.1%	21	2.3%	8	1.8%	49	1.4%	9	1.2%	52	1.0%
Furniture & Home Furnishing Stores	0	0.0%	0	0.0%	1	0.2%	2	0.1%	1	0.1%	2	0.0%
Electronics & Appliance Stores	0	0.0%	0	0.0%	1	0.2%	16	0.5%	4	0.5%	24	0.5%
Building & Garden Equipment	0	0.0%	1	0.1%	4	0.9%	24	0.7%	7	0.9%	45	0.8%
Food & Beverage Stores	4	4.2%	91	9.8%	8	1.8%	153	4.5%	13	1.8%	316	6.0%
Health & Personal Care Stores	1	1.0%	13	1.4%	3	0.7%	31	0.9%	5	0.7%	45	0.8%
Gasoline Stations	1	1.0%	8	0.9%	6	1.3%	37	1.1%	7	0.9%	43	0.8%
Clothing, Shoe and Jewellery Stores	1	1.0%	2	0.2%	3	0.7%	8	0.2%	6	0.8%	14	0.3%
Sporting Goods, Hobby & Music Stores	2	2.1%	5	0.5%	10	2.2%	33	1.0%	14	1.9%	42	0.8%
General Merchandise Stores	2	2.1%	21	2.3%	5	1.1%	36	1.1%	7	0.9%	41	0.8%
Transportation & Warehousing (48-49)	2	2.1%	7	0.8%	14	3.1%	111	3.3%	21	2.9%	130	2.5%
Truck Transportation	1	1.0%	2	0.2%	4	0.9%	68	2.0%	8	1.1%	80	1.5%
Information (51)	0	0.0%	0	0.0%	8	1.8%	75	2.2%	12	1.6%	88	1.7%
Finance & Insurance (52)	4	4.2%	16	1.7%	17	3.8%	61	1.8%	25	3.4%	82	1.6%
Central Bank/Credit & Related Activities	3	3.1%	12	1.3%	7	1.6%	33	1.0%	9	1.2%	42	0.8%
Securities & Commodity Contracts	0	0.0%	0	0.0%	2	0.4%	3	0.1%	4	0.5%	9	0.2%
Funds, Trusts & Other Financial	1	1.0%	4	0.4%	9	2.0%	25	0.7%	11	1.5%	31	0.6%
Real Estate, Rental & Leasing (53)	2	2.1%	5	0.5%	14	3.1%	27	0.8%	25	3.4%	56	1.1%
Professional, Scientific & Tech Services (54)	5	5.2%	18	1.9%	36	8.0%	136	4.0%	67	9.1%	240	4.5%
Legal Services	1	1.0%	3	0.3%	3	0.7%	9	0.3%	3	0.4%	9	0.2%



Source: This infographic contains data provided by Esri-Data Axle (2025), Esri (2025). Data note: Not all NAICS subcategories for a 2 digit major category are being shown.

Business Summary Report (NAICS)

1801-1801 N Meridian Rd
 1801-1801 N Meridian Rd, Kuna, Idaho, 83634
 Rings: 1, 3, 5 mile radii



by NAICS Codes	1 mile				3 miles				5 miles			
	Businesses		Employees		Businesses		Employees		Businesses		Employees	
	Number	%	Number	%	Number	%	Number	%	Number	%	Number	%
Management of Companies (55)	0	0.0%	0	0.0%	0	0.0%	0	0.0%	0	0.0%	1	0.0%
Administrative, Support & Waste Mgmt (56)	7	7.3%	35	3.8%	29	6.4%	111	3.3%	43	5.8%	166	3.1%
Educational Services (61)	8	8.3%	288	31.1%	25	5.5%	663	19.4%	32	4.3%	991	18.7%
Health Care & Social Assistance (62)	11	11.5%	108	11.7%	40	8.8%	350	10.3%	61	8.3%	556	10.5%
Ambulatory Health Care	8	8.3%	74	8.0%	25	5.5%	211	6.2%	37	5.0%	314	5.9%
Hospital	0	0.0%	0	0.0%	2	0.4%	23	0.7%	3	0.4%	51	1.0%
Nursing/Residential Care	0	0.0%	0	0.0%	1	0.2%	15	0.4%	1	0.1%	26	0.5%
Social Assistance	3	3.1%	34	3.7%	11	2.4%	102	3.0%	19	2.6%	165	3.1%
Arts, Entertainment & Recreation (71)	1	1.0%	7	0.8%	12	2.6%	70	2.0%	24	3.3%	139	2.6%
Accommodation & Food Services (72)	11	11.5%	188	20.3%	44	9.7%	606	17.8%	51	6.9%	687	13.0%
Accommodation	0	0.0%	0	0.0%	1	0.2%	1	0.0%	1	0.1%	2	0.0%
Food & Drinking Places	11	11.5%	188	20.3%	43	9.5%	604	17.7%	50	6.8%	684	12.9%
Other Services Except Public Admin (81)	15	15.6%	45	4.8%	52	11.5%	147	4.3%	83	11.3%	220	4.2%
Repair & Maintenance	3	3.1%	9	1.0%	14	3.1%	34	1.0%	19	2.6%	42	0.8%
Auto Repair & Maintenance	3	3.1%	9	1.0%	10	2.2%	27	0.8%	11	1.5%	28	0.5%
Personal & Laundry Service	4	4.2%	15	1.6%	13	2.9%	55	1.6%	19	2.6%	64	1.2%
Civic and Other Orgs	8	8.3%	21	2.3%	24	5.3%	57	1.7%	45	6.1%	114	2.1%
Public Administration (92)	1	1.0%	6	0.7%	10	2.2%	269	7.9%	13	1.8%	645	12.2%
Unclassified Establishments (99)	3	3.1%	0	0.0%	21	4.6%	5	0.1%	57	7.7%	8	0.1%
Total (11-99)	96	100.0%	927	100.0%	453	100.0%	3,408	100.0%	738	100.0%	5,292	100.0%



Source: This infographic contains data provided by Esri-Data Axle (2025), Esri (2025). Data note: Not all NAICS subcategories for a 2 digit major category are being shown.

Business Summary Report (SIC)

1801-1801 N Meridian Rd
 1801-1801 N Meridian Rd, Kuna, Idaho, 83634
 Rings: 1, 3, 5 mile radii



Data for all businesses in area	1 mile	3 miles	5 miles
Total Businesses	96	453	738
Total Employees	927	3,408	5,292
Total Population	6,211	31,834	66,584
Employee/Population Ratio (per 100)	14.9	10.7	7.9

by SIC Codes	Businesses		Employees		Businesses		Employees		Businesses		Employees	
	Number	%	Number	%	Number	%	Number	%	Number	%	Number	%
Agriculture & Mining (01-14)	7	7.3%	32	3.5%	26	5.7%	101	3.0%	43	5.8%	184	3.5%
Construction (15-17)	8	8.3%	18	1.9%	49	10.8%	185	5.4%	101	13.7%	347	6.6%
Manufacturing (20-39)	0	0.0%	3	0.3%	9	2.0%	59	1.7%	16	2.2%	102	1.9%
Transportation (40-47)	3	3.1%	8	0.9%	15	3.3%	107	3.1%	25	3.4%	132	2.5%
Communication (48)	0	0.0%	0	0.0%	3	0.7%	7	0.2%	5	0.7%	15	0.3%
Utility (49)	0	0.0%	0	0.0%	3	0.7%	32	0.9%	3	0.4%	33	0.6%
Wholesale Trade (50-51)	2	2.1%	16	1.7%	12	2.6%	77	2.3%	18	2.4%	115	2.2%
Retail Trade Summary (52-59)	25	26.0%	351	37.9%	97	21.4%	1,003	29.4%	128	17.3%	1,319	24.9%
Home Improvement	0	0.0%	1	0.1%	4	0.9%	24	0.7%	7	0.9%	45	0.8%
General Merchandise Stores	2	2.1%	21	2.3%	3	0.7%	32	0.9%	3	0.4%	32	0.6%
Food Stores	3	3.1%	88	9.5%	10	2.2%	155	4.5%	15	2.0%	318	6.0%
Auto Dealers & Gas Stations	5	5.2%	29	3.1%	14	3.1%	87	2.5%	16	2.2%	95	1.8%
Apparel & Accessory Stores	1	1.0%	2	0.2%	3	0.7%	8	0.2%	6	0.8%	14	0.3%
Furniture & Home Furnishings	1	1.0%	1	0.1%	4	0.9%	21	0.6%	6	0.8%	28	0.5%
Eating & Drinking Places	11	11.5%	186	20.1%	41	9.1%	599	17.6%	48	6.5%	677	12.8%
Miscellaneous Retail	4	4.2%	23	2.5%	18	4.0%	77	2.3%	27	3.7%	108	2.0%

Source: This infographic contains data provided by Esri-Data Axle (2025), Esri (2025).

Business Summary Report (SIC)

1801-1801 N Meridian Rd
 1801-1801 N Meridian Rd, Kuna, Idaho, 83634
 Rings: 1, 3, 5 mile radii



by SIC Codes	1 mile				3 miles				5 miles			
	Businesses		Employees		Businesses		Employees		Businesses		Employees	
	Number	%	Number	%	Number	%	Number	%	Number	%	Number	%
Finance, Insurance, Real Estate (60-67)	5	5.2%	18	1.9%	25	5.5%	77	2.3%	43	5.8%	127	2.4%
Banks, Savings & Lending	3	3.1%	12	1.3%	7	1.6%	33	1.0%	9	1.2%	42	0.8%
Securities Brokers	0	0.0%	0	0.0%	2	0.4%	3	0.1%	3	0.4%	8	0.1%
Insurance Carriers & Agents	1	1.0%	4	0.4%	9	2.0%	25	0.7%	11	1.5%	31	0.6%
Real Estate, Investment Offices	1	1.0%	2	0.2%	8	1.8%	16	0.5%	19	2.6%	46	0.9%
Services Summary (70-89)	42	43.8%	476	51.4%	182	40.2%	1,484	43.5%	286	38.8%	2,263	42.8%
Hotels & Lodging	0	0.0%	0	0.0%	1	0.2%	1	0.0%	1	0.1%	2	0.0%
Automotive Services	4	4.2%	11	1.2%	14	3.1%	41	1.2%	15	2.0%	43	0.8%
Movies & Amusements	1	1.0%	8	0.9%	15	3.3%	73	2.1%	25	3.4%	135	2.5%
Health Services	8	8.3%	74	8.0%	28	6.2%	248	7.3%	41	5.6%	392	7.4%
Legal Services	1	1.0%	3	0.3%	2	0.4%	7	0.2%	2	0.3%	7	0.1%
Education Inst. & Libraries	7	7.3%	287	31.0%	23	5.1%	697	20.4%	32	4.3%	1,030	19.5%
Other Services	20	20.8%	94	10.1%	100	22.1%	417	12.2%	171	23.2%	655	12.4%
Government (91-97)	1	1.0%	6	0.7%	10	2.2%	269	7.9%	13	1.8%	645	12.2%
Unclassified Establishments (99)	3	3.1%	0	0.0%	21	4.6%	5	0.1%	57	7.7%	8	0.1%
Totals (01-99)	96	100.0%	927	100.0%	453	100.0%	3,408	100.0%	738	100.0%	5,292	100.0%



Source: This infographic contains data provided by Esri-Data Axle (2025), Esri (2025).