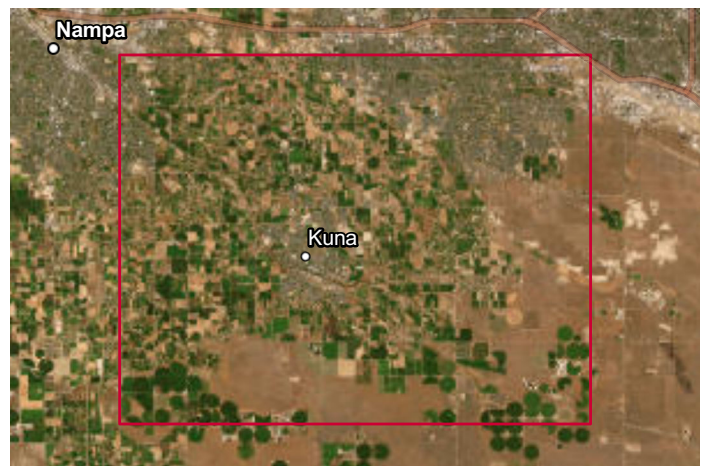
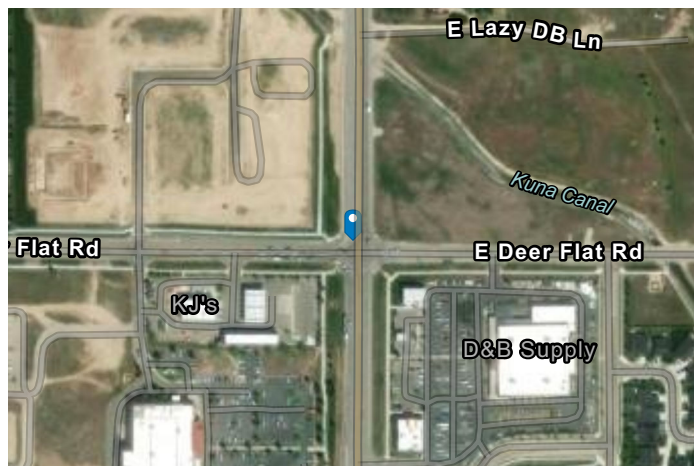
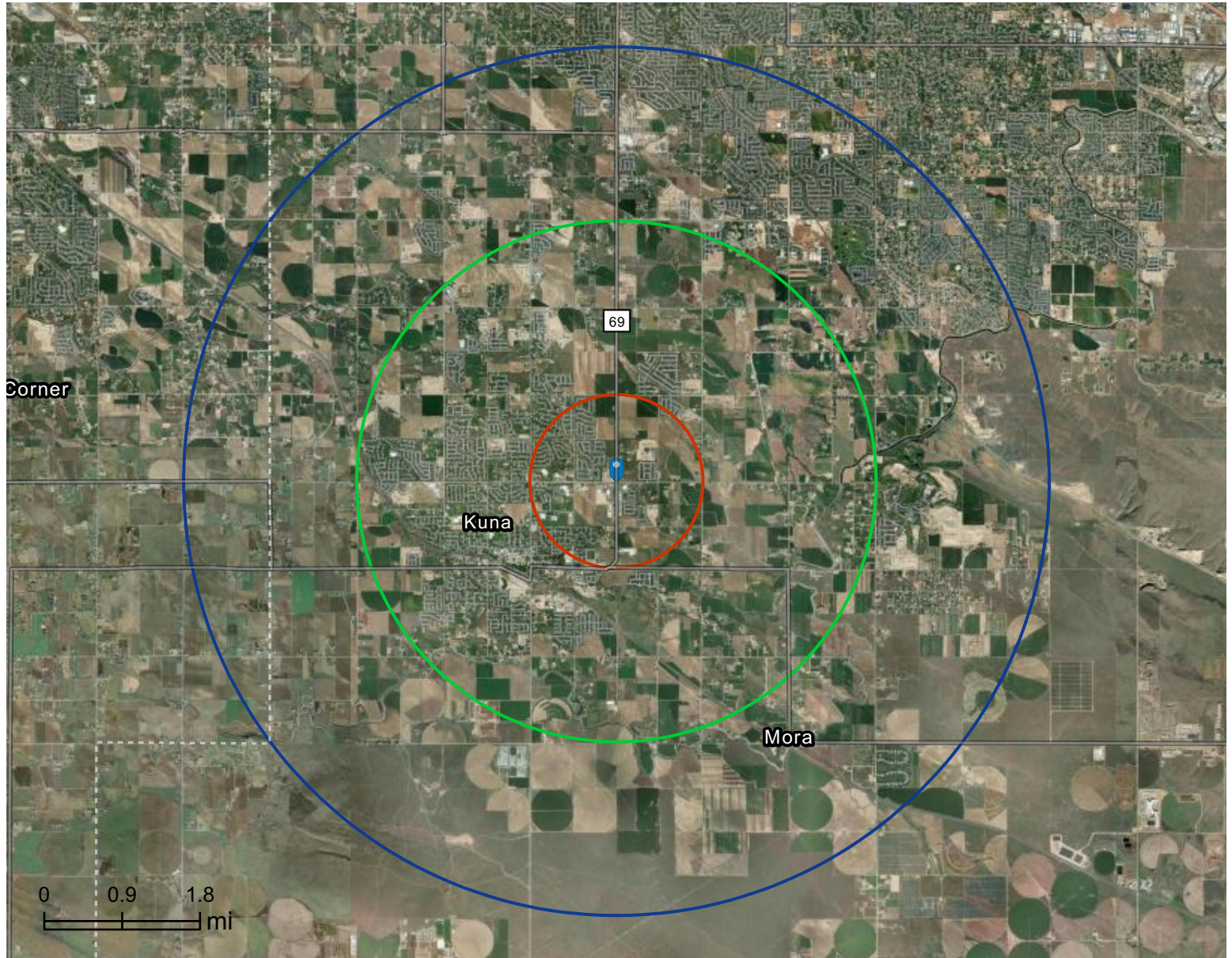


Site Map

1801-1801 N Meridian Rd
1801-1801 N Meridian Rd, Kuna, Idaho, 83634
Rings: 1, 3, 5 mile radii

Prepared by Esri
Latitude: 43.50291
Longitude: -116.39395



Retail Demand Outlook

1801-1801 N Meridian Rd
 1801-1801 N Meridian Rd, Kuna, Idaho, 83634
 Ring: 1 mile radius



Top Tapestry Segments	Percent	Demographic Summary	2025	2030
Boomburbs (H2)	51.5%	Population	6,211	6,900
Up and Coming Families (G2)	31.3%	Households	2,130	2,406
Classic Comfort (K4)	11.1%	Families	1,651	1,858
Savvy Suburbanites (L1)	6.1%	Median Age	32.7	34.0
	0.0%	Median Household Income	\$82,454	\$91,883

	2025 Consumer Spending	2030 Forecasted Demand	Projected Spending Growth
Apparel and Services	\$4,265,735	\$5,300,537	\$1,034,802
Men's	\$812,985	\$1,009,608	\$196,623
Women's	\$1,399,844	\$1,738,214	\$338,370
Children's	\$684,000	\$850,756	\$166,756
Footwear	\$968,337	\$1,203,501	\$235,164
Watches & Jewelry	\$326,093	\$405,888	\$79,795
Apparel Products and Services (1)	\$74,477	\$92,570	\$18,093
Computer			
Computers and Hardware for Home Use	\$392,418	\$487,303	\$94,885
Portable Memory	\$5,974	\$7,424	\$1,450
Computer Software	\$27,577	\$34,279	\$6,702
Computer Accessories	\$31,400	\$39,051	\$7,651
Education			
Educational Books/Supplies/Other Expenditures	\$165,700	\$205,673	\$39,973
Other School Supplies	\$154,756	\$192,391	\$37,635

Data Note: The Spending Potential Index (SPI) is household-based, and represents the amount spent for a product or service relative to a national average of 100.



Source: Esri forecasts for 2025 and 2030; Consumer Spending data are derived from the 2022 and 2023 Consumer Expenditure Surveys, Bureau of Labor Statistics.

	2025 Consumer Spending	2030 Forecasted Demand	Projected Spending Growth
Entertainment & Recreation	\$6,986,259	\$8,687,019	\$1,700,760
Fees and Admissions	\$1,698,516	\$2,117,154	\$418,638
Membership Fees for Clubs (2)	\$527,701	\$656,721	\$129,020
Fees for Participant Sports, excl. Trips	\$327,419	\$408,124	\$80,705
Tickets to Theatre/Operas/Concerts	\$185,513	\$231,271	\$45,758
Tickets to Movies	\$69,209	\$86,220	\$17,011
Tickets to Parks or Museums	\$79,876	\$99,765	\$19,889
Admission to Sporting Events, excl. Trips	\$181,643	\$225,853	\$44,210
Fees for Recreational Lessons	\$325,752	\$407,468	\$81,716
Dating Services	\$1,404	\$1,731	\$327
TV/Video/Audio	\$2,069,402	\$2,566,605	\$497,203
Cable and Satellite Television Services	\$1,008,065	\$1,249,128	\$241,063
Televisions	\$220,481	\$273,747	\$53,266
Satellite Dishes	\$2,312	\$2,886	\$574
VCRs, Video Cameras, and DVD Players	\$7,600	\$9,445	\$1,845
Miscellaneous Video Equipment	\$99,500	\$122,652	\$23,152
Video Cassettes and DVDs	\$6,346	\$7,908	\$1,562
Video Game Hardware/Accessories	\$82,587	\$102,545	\$19,958
Video Game Software	\$35,803	\$44,485	\$8,682
Rental/Streaming/Downloaded Video	\$360,350	\$447,496	\$87,146
Installation of Televisions	\$2,310	\$2,868	\$558
Audio (3)	\$240,191	\$298,677	\$58,486
Rental of TV/VCR/Radio/Sound Equipment	\$319	\$389	\$70
Repair of TV/Radio/Sound Equipment	\$3,538	\$4,378	\$840
Pets	\$1,701,043	\$2,113,107	\$412,064
Toys/Games/Crafts/Hobbies (4)	\$307,144	\$382,115	\$74,971
Recreational Vehicles and Fees (5)	\$375,096	\$467,522	\$92,426
Sports/Recreation/Exercise Equipment (6)	\$465,327	\$580,023	\$114,696
Photo Equipment and Supplies (7)	\$110,300	\$137,358	\$27,058
Reading (8)	\$185,167	\$230,490	\$45,323
Live Entertainment-for Catered Affairs	\$28,692	\$35,781	\$7,089
Rental of Party Supplies for Catered Affairs	\$45,573	\$56,864	\$11,291

Data Note: The Spending Potential Index (SPI) is household-based, and represents the amount spent for a product or service relative to a national average of 100.



Source: Esri forecasts for 2025 and 2030; Consumer Spending data are derived from the 2022 and 2023 Consumer Expenditure Surveys, Bureau of Labor Statistics.

	2025 Consumer Spending	2030 Forecasted Demand	Projected Spending Growth
Food	\$19,339,239	\$24,007,579	\$4,668,340
Food at Home	\$12,142,500	\$15,068,945	\$2,926,445
Bakery and Cereal Products	\$1,602,939	\$1,990,023	\$387,084
Meats, Poultry, Fish, and Eggs	\$2,515,321	\$3,118,405	\$603,084
Dairy Products	\$1,227,577	\$1,523,907	\$296,330
Fruits and Vegetables	\$2,050,576	\$2,546,268	\$495,692
Snacks and Other Food at Home (9)	\$4,746,088	\$5,890,342	\$1,144,254
Food Away from Home	\$7,196,739	\$8,938,634	\$1,741,895
Alcoholic Beverages	\$1,110,752	\$1,380,343	\$269,591
Financial			
Value of Stocks/Bonds/Mutual Funds	\$69,103,097	\$86,043,352	\$16,940,255
Value of Retirement Plans	\$245,373,128	\$305,256,038	\$59,882,910
Value of Other Financial Assets	\$23,710,951	\$29,463,712	\$5,752,761
Vehicle Loan Amount excluding Interest	\$7,003,358	\$8,685,800	\$1,682,442
Value of Credit Card Debt	\$5,312,527	\$6,598,514	\$1,285,987
Health			
Nonprescription Drugs	\$338,912	\$420,589	\$81,677
Prescription Drugs	\$642,113	\$795,568	\$153,455
Eyeglasses and Contact Lenses	\$211,541	\$262,932	\$51,391
Personal Care Products (10)	\$1,034,821	\$1,283,950	\$249,129
Smoking Products	\$682,454	\$842,994	\$160,540
Home			
Mortgage Payment and Basics (11)	\$25,298,636	\$31,502,292	\$6,203,656
Maintenance and Remodeling Services	\$8,324,985	\$10,357,819	\$2,032,834
Maintenance and Remodeling Materials (12)	\$1,559,330	\$1,941,511	\$382,181
Utilities, Fuel, and Public Services	\$10,094,918	\$12,511,180	\$2,416,262

Data Note: The Spending Potential Index (SPI) is household-based, and represents the amount spent for a product or service relative to a national average of 100.



Source: Esri forecasts for 2025 and 2030; Consumer Spending data are derived from the 2022 and 2023 Consumer Expenditure Surveys, Bureau of Labor Statistics.

	2025 Consumer Spending	2030 Forecasted Demand	Projected Spending Growth
Household Furnishings and Equipment			
Household Textiles (13)	\$200,064	\$248,229	\$48,165
Furniture	\$1,599,418	\$1,986,548	\$387,130
Rugs	\$65,693	\$81,753	\$16,060
Major Appliances (14)	\$923,008	\$1,146,546	\$223,538
Housewares (15)	\$159,514	\$198,041	\$38,527
Small Appliances	\$2,290,253	\$2,846,841	\$30,873
Luggage	\$41,855	\$52,051	\$10,196
Telephones and Accessories	\$119,012	\$147,643	\$28,631
Household Operations			
Child Care	\$1,137,387	\$1,417,583	\$280,196
Lawn/Garden (16)	\$1,121,956	\$1,392,943	\$270,987
Moving/Storage/Freight Express	\$188,643	\$234,383	\$45,740
Housekeeping Supplies (17)			
	\$1,424,155	\$1,767,178	\$343,023
Insurance			
Owners and Renters Insurance	\$1,607,331	\$1,994,471	\$387,140
Vehicle Insurance	\$3,939,717	\$4,881,177	\$941,460
Life/Other Insurance	\$1,203,206	\$1,496,810	\$293,604
Health Insurance	\$8,402,404	\$10,423,353	\$2,020,949
Transportation			
Payments on Vehicles excluding Leases	\$5,726,924	\$7,105,693	\$1,378,769
Gasoline, Diesel Fuel, & Electric Vehicle Charging	\$6,194,208	\$7,677,573	\$1,483,365
Vehicle Maintenance and Repairs	\$2,326,625	\$2,888,693	\$562,068
Travel			
Airline Fares	\$1,431,661	\$1,784,027	\$352,366
Lodging on Trips	\$1,852,805	\$2,306,248	\$453,443
Auto/Truck Rental on Trips	\$216,240	\$269,353	\$53,113
Food and Drink on Trips	\$1,448,753	\$1,802,947	\$354,194

Data Note: The Spending Potential Index (SPI) is household-based, and represents the amount spent for a product or service relative to a national average of 100.



Source: Esri forecasts for 2025 and 2030; Consumer Spending data are derived from the 2022 and 2023 Consumer Expenditure Surveys, Bureau of Labor Statistics.

- (1) Apparel Products and Services includes shoe repair and other shoe services, apparel laundry and dry cleaning, alteration, repair and tailoring of apparel, clothing rental and storage, and watch and jewelry repair.
- (2) Membership Fees for Clubs includes membership fees for social, recreational, and health clubs.
- (3) Audio includes satellite radio service, radios, stereos, sound components, equipment and accessories, digital audio players, records, CDs, audio tapes, streaming/downloaded audio, musical instruments and accessories, and rental and repair of musical instruments.
- (4) Toys and Games includes toys, games, arts and crafts, tricycles, playground equipment, arcade games, online entertainment and games, and stamp and coin collecting.
- (5) Recreational Vehicles & Fees includes docking and landing fees for boats and planes, payments on boats, trailers, campers and RVs, rental of boats, trailers, campers and RVs, and camp fees.
- (6) Sports/Recreation/Exercise Equipment includes exercise equipment and gear, game tables, bicycles, camping equipment, hunting and fishing equipment, winter sports equipment, water sports equipment, other sports equipment, and rental/repair of sports/recreation/exercise equipment.
- (7) Photo Equipment includes film, film processing, photographic equipment, rental and repair of photo equipment, and photographer fees.
- (8) Reading includes digital book readers, books, magazine and newspaper subscriptions, and single copies of magazines and newspapers.
- (9) Snacks and Other Food at Home includes candy, chewing gum, sugar, artificial sweeteners, jam, jelly, preserves, margarine, fats and oils, salad dressing, nondairy cream and milk, peanut butter, frozen prepared food, potato chips and other snacks, nuts, salt, spices, seasonings, olives, pickles, relishes, sauces, gravy, other condiments, soup, prepared salad, prepared dessert, baby food, miscellaneous prepared food, and nonalcoholic beverages.
- (10) Personal Care Products includes hair care products, nonelectric articles for hair, wigs, hairpieces, oral hygiene products, shaving needs, perfume, cosmetics, skincare, bath products, nail products, deodorant, feminine hygiene products, adult diapers, other miscellaneous care products and personal care appliances.
- (11) Mortgage Payment and Basics includes mortgage interest, mortgage principal, property taxes, homeowners insurance, and ground rent on owned dwellings.
- (12) Maintenance and Remodeling Materials includes supplies/tools/equipment for painting and wallpapering, plumbing supplies and equipment, electrical/heating/AC supplies, materials for roofing/gutters, materials for plaster/panel/siding, materials for patio/fence/brick work, landscaping materials, and insulation materials for owned homes.
- (13) Household Textiles includes bathroom linens, bedroom linens, kitchen linens, dining room linens, other linens, curtains, draperies, slipcovers and decorative pillows.
- (14) Major Appliances includes dishwashers, disposals, refrigerators, freezers, washers, dryers, stoves, ovens, microwaves, window air conditioners, electric floor cleaning equipment, sewing machines, and miscellaneous appliances.
- (15) Housewares includes flatware, dishes, cups glasses, serving pieces, nonelectric cookware, and tableware.
- (16) Lawn and Garden includes lawn and garden supplies, equipment and care service, indoor plants, fresh flowers, and repair/rental of lawn and garden equipment.
- (17) Housekeeping Supplies includes soaps and laundry detergents, cleaning products, toilet tissue, paper towels, napkins, paper/plastic/foil products, stationery, giftwrap supplies, postage, and delivery services.



Retail Demand Outlook


1801-1801 N Meridian Rd
 1801-1801 N Meridian Rd, Kuna, Idaho, 83634
 Ring: 3 mile radius



Top Tapestry Segments	Percent	Demographic Summary	2025	2030
Boomburbs (H2)	60.8%	Population	31,834	35,762
Up and Coming Families (G2)	16.1%	Households	10,682	12,180
Savvy Suburbanites (L1)	8.5%	Families	8,388	9,551
Classic Comfort (K4)	6.0%	Median Age	33.3	34.5
Rural Versatility (E5)	5.0%	Median Household Income	\$93,414	\$105,262

	2025 Consumer Spending	2030 Forecasted Demand	Projected Spending Growth
Apparel and Services	\$27,446,928	\$35,758,729	\$8,311,801
Men's	\$5,217,066	\$6,794,098	\$1,577,032
Women's	\$9,012,716	\$11,734,029	\$2,721,313
Children's	\$4,395,244	\$5,731,226	\$1,335,982
Footwear	\$6,227,748	\$8,113,770	\$1,886,022
Watches & Jewelry	\$2,114,213	\$2,759,925	\$645,712
Apparel Products and Services (1)	\$479,941	\$625,680	\$145,739
Computer			
Computers and Hardware for Home Use	\$2,509,166	\$3,268,464	\$759,298
Portable Memory	\$38,587	\$50,252	\$11,665
Computer Software	\$176,796	\$230,381	\$53,585
Computer Accessories	\$203,030	\$264,634	\$61,604
Education			
Educational Books/Supplies/Other Expenditures	\$1,055,847	\$1,374,977	\$319,130
Other School Supplies	\$998,827	\$1,301,678	\$302,851

Data Note: The Spending Potential Index (SPI) is household-based, and represents the amount spent for a product or service relative to a national average of 100.

 **Source:** Esri forecasts for 2025 and 2030; Consumer Spending data are derived from the 2022 and 2023 Consumer Expenditure Surveys, Bureau of Labor Statistics.

	2025 Consumer Spending	2030 Forecasted Demand	Projected Spending Growth
Entertainment & Recreation	\$45,240,089	\$58,963,746	\$13,723,657
Fees and Admissions	\$11,058,064	\$14,454,902	\$3,396,838
Membership Fees for Clubs (2)	\$3,418,495	\$4,463,600	\$1,045,105
Fees for Participant Sports, excl. Trips	\$2,129,276	\$2,782,801	\$653,525
Tickets to Theatre/Operas/Concerts	\$1,210,051	\$1,582,041	\$371,990
Tickets to Movies	\$445,870	\$582,536	\$136,666
Tickets to Parks or Museums	\$526,867	\$689,169	\$162,302
Admission to Sporting Events, excl. Trips	\$1,163,917	\$1,518,243	\$354,326
Fees for Recreational Lessons	\$2,154,943	\$2,825,328	\$670,385
Dating Services	\$8,644	\$11,184	\$2,540
TV/Video/Audio	\$13,228,325	\$17,200,321	\$3,971,996
Cable and Satellite Television Services	\$6,481,847	\$8,416,245	\$1,934,398
Televisions	\$1,404,273	\$1,828,635	\$424,362
Satellite Dishes	\$15,299	\$19,967	\$4,668
VCRs, Video Cameras, and DVD Players	\$49,675	\$64,593	\$14,918
Miscellaneous Video Equipment	\$594,130	\$770,062	\$175,932
Video Cassettes and DVDs	\$42,344	\$55,161	\$12,817
Video Game Hardware/Accessories	\$527,026	\$685,990	\$158,964
Video Game Software	\$229,236	\$298,617	\$69,381
Rental/Streaming/Downloaded Video	\$2,294,851	\$2,988,703	\$693,852
Installation of Televisions	\$14,979	\$19,524	\$4,545
Audio (3)	\$1,550,426	\$2,021,417	\$470,991
Rental of TV/VCR/Radio/Sound Equipment	\$2,083	\$2,646	\$563
Repair of TV/Radio/Sound Equipment	\$22,156	\$28,759	\$6,603
Pets	\$11,044,397	\$14,373,808	\$3,329,411
Toys/Games/Crafts/Hobbies (4)	\$1,991,356	\$2,595,839	\$604,483
Recreational Vehicles and Fees (5)	\$2,449,841	\$3,200,243	\$750,402
Sports/Recreation/Exercise Equipment (6)	\$3,057,854	\$3,991,099	\$933,245
Photo Equipment and Supplies (7)	\$715,696	\$934,712	\$219,016
Reading (8)	\$1,209,550	\$1,578,251	\$368,701
Live Entertainment-for Catered Affairs	\$188,273	\$246,294	\$58,021
Rental of Party Supplies for Catered Affairs	\$296,733	\$388,277	\$91,544

Data Note: The Spending Potential Index (SPI) is household-based, and represents the amount spent for a product or service relative to a national average of 100.



Source: Esri forecasts for 2025 and 2030; Consumer Spending data are derived from the 2022 and 2023 Consumer Expenditure Surveys, Bureau of Labor Statistics.

	2025 Consumer Spending	2030 Forecasted Demand	Projected Spending Growth
Food	\$124,298,824	\$161,755,695	\$37,456,871
Food at Home	\$78,082,562	\$101,565,915	\$23,483,353
Bakery and Cereal Products	\$10,332,845	\$13,445,576	\$3,112,731
Meats, Poultry, Fish, and Eggs	\$16,072,096	\$20,889,675	\$4,817,579
Dairy Products	\$7,911,967	\$10,293,400	\$2,381,433
Fruits and Vegetables	\$13,207,828	\$17,193,283	\$3,985,455
Snacks and Other Food at Home (9)	\$30,557,825	\$39,743,980	\$9,186,155
Food Away from Home	\$46,216,262	\$60,189,780	\$13,973,518
Alcoholic Beverages	\$7,161,229	\$9,335,305	\$2,174,076
Financial			
Value of Stocks/Bonds/Mutual Funds	\$455,661,792	\$595,025,878	\$139,364,086
Value of Retirement Plans	\$1,599,132,210	\$2,086,799,018	\$487,666,808
Value of Other Financial Assets	\$152,860,349	\$199,232,520	\$46,372,171
Vehicle Loan Amount excluding Interest	\$44,369,708	\$57,715,685	\$13,345,977
Value of Credit Card Debt	\$34,039,194	\$44,340,346	\$10,301,152
Health			
Nonprescription Drugs	\$2,184,850	\$2,840,645	\$655,795
Prescription Drugs	\$4,109,270	\$5,335,448	\$1,226,178
Eyeglasses and Contact Lenses	\$1,369,019	\$1,783,778	\$414,759
Personal Care Products (10)	\$6,604,176	\$8,591,821	\$1,987,645
Smoking Products	\$4,371,827	\$5,649,510	\$1,277,683
Home			
Mortgage Payment and Basics (11)	\$164,177,489	\$214,389,298	\$50,211,809
Maintenance and Remodeling Services	\$54,018,319	\$70,475,638	\$16,457,319
Maintenance and Remodeling Materials (12)	\$10,178,014	\$13,273,837	\$3,095,823
Utilities, Fuel, and Public Services	\$64,393,237	\$83,659,614	\$19,266,377

Data Note: The Spending Potential Index (SPI) is household-based, and represents the amount spent for a product or service relative to a national average of 100.



Source: Esri forecasts for 2025 and 2030; Consumer Spending data are derived from the 2022 and 2023 Consumer Expenditure Surveys, Bureau of Labor Statistics.

	2025 Consumer Spending	2030 Forecasted Demand	Projected Spending Growth
Household Furnishings and Equipment			
Household Textiles (13)	\$1,277,082	\$1,661,797	\$384,715
Furniture	\$10,249,557	\$13,350,626	\$3,101,069
Rugs	\$426,587	\$556,690	\$130,103
Major Appliances (14)	\$5,937,798	\$7,732,712	\$1,794,914
Housewares (15)	\$1,027,571	\$1,336,993	\$309,422
Small Appliances	\$14,812,598	\$19,300,672	\$246,774
Luggage	\$270,484	\$352,768	\$82,284
Telephones and Accessories	\$767,914	\$998,575	\$230,661
Household Operations			
Child Care	\$7,380,225	\$9,647,064	\$2,266,839
Lawn/Garden (16)	\$7,275,024	\$9,466,429	\$2,191,405
Moving/Storage/Freight Express	\$1,216,419	\$1,584,752	\$368,333
Housekeeping Supplies (17)			
	\$9,174,455	\$11,929,237	\$2,754,782
Insurance			
Owners and Renters Insurance	\$10,288,478	\$13,383,023	\$3,094,545
Vehicle Insurance	\$24,986,413	\$32,456,990	\$7,470,577
Life/Other Insurance	\$7,827,870	\$10,206,114	\$2,378,244
Health Insurance	\$53,893,892	\$70,080,757	\$16,186,865
Transportation			
Payments on Vehicles excluding Leases	\$36,543,783	\$47,530,953	\$10,987,170
Gasoline, Diesel Fuel, & Electric Vehicle Charging	\$39,524,222	\$51,341,451	\$11,817,229
Vehicle Maintenance and Repairs	\$14,945,800	\$19,449,700	\$4,503,900
Travel			
Airline Fares	\$9,333,088	\$12,197,808	\$2,864,720
Lodging on Trips	\$12,088,737	\$15,776,129	\$3,687,392
Auto/Truck Rental on Trips	\$1,404,254	\$1,833,965	\$429,711
Food and Drink on Trips	\$9,402,408	\$12,268,635	\$2,866,227

Data Note: The Spending Potential Index (SPI) is household-based, and represents the amount spent for a product or service relative to a national average of 100.



Source: Esri forecasts for 2025 and 2030; Consumer Spending data are derived from the 2022 and 2023 Consumer Expenditure Surveys, Bureau of Labor Statistics.

- (1) Apparel Products and Services includes shoe repair and other shoe services, apparel laundry and dry cleaning, alteration, repair and tailoring of apparel, clothing rental and storage, and watch and jewelry repair.
- (2) Membership Fees for Clubs includes membership fees for social, recreational, and health clubs.
- (3) Audio includes satellite radio service, radios, stereos, sound components, equipment and accessories, digital audio players, records, CDs, audio tapes, streaming/downloaded audio, musical instruments and accessories, and rental and repair of musical instruments.
- (4) Toys and Games includes toys, games, arts and crafts, tricycles, playground equipment, arcade games, online entertainment and games, and stamp and coin collecting.
- (5) Recreational Vehicles & Fees includes docking and landing fees for boats and planes, payments on boats, trailers, campers and RVs, rental of boats, trailers, campers and RVs, and camp fees.
- (6) Sports/Recreation/Exercise Equipment includes exercise equipment and gear, game tables, bicycles, camping equipment, hunting and fishing equipment, winter sports equipment, water sports equipment, other sports equipment, and rental/repair of sports/recreation/exercise equipment.
- (7) Photo Equipment includes film, film processing, photographic equipment, rental and repair of photo equipment, and photographer fees.
- (8) Reading includes digital book readers, books, magazine and newspaper subscriptions, and single copies of magazines and newspapers.
- (9) Snacks and Other Food at Home includes candy, chewing gum, sugar, artificial sweeteners, jam, jelly, preserves, margarine, fats and oils, salad dressing, nondairy cream and milk, peanut butter, frozen prepared food, potato chips and other snacks, nuts, salt, spices, seasonings, olives, pickles, relishes, sauces, gravy, other condiments, soup, prepared salad, prepared dessert, baby food, miscellaneous prepared food, and nonalcoholic beverages.
- (10) Personal Care Products includes hair care products, nonelectric articles for hair, wigs, hairpieces, oral hygiene products, shaving needs, perfume, cosmetics, skincare, bath products, nail products, deodorant, feminine hygiene products, adult diapers, other miscellaneous care products and personal care appliances.
- (11) Mortgage Payment and Basics includes mortgage interest, mortgage principal, property taxes, homeowners insurance, and ground rent on owned dwellings.
- (12) Maintenance and Remodeling Materials includes supplies/tools/equipment for painting and wallpapering, plumbing supplies and equipment, electrical/heating/AC supplies, materials for roofing/gutters, materials for plaster/panel/siding, materials for patio/fence/brick work, landscaping materials, and insulation materials for owned homes.
- (13) Household Textiles includes bathroom linens, bedroom linens, kitchen linens, dining room linens, other linens, curtains, draperies, slipcovers and decorative pillows.
- (14) Major Appliances includes dishwashers, disposals, refrigerators, freezers, washers, dryers, stoves, ovens, microwaves, window air conditioners, electric floor cleaning equipment, sewing machines, and miscellaneous appliances.
- (15) Housewares includes flatware, dishes, cups glasses, serving pieces, nonelectric cookware, and tableware.
- (16) Lawn and Garden includes lawn and garden supplies, equipment and care service, indoor plants, fresh flowers, and repair/rental of lawn and garden equipment.
- (17) Housekeeping Supplies includes soaps and laundry detergents, cleaning products, toilet tissue, paper towels, napkins, paper/plastic/foil products, stationery, giftwrap supplies, postage, and delivery services.



Retail Demand Outlook

1801-1801 N Meridian Rd
 1801-1801 N Meridian Rd, Kuna, Idaho, 83634
 Ring: 5 mile radius



Top Tapestry Segments	Percent	Demographic Summary	2025	2030
Boomburbs (H2)	47.5%	Population	66,584	75,000
Professional Pride (L2)	13.8%	Households	22,707	26,054
Savvy Suburbanites (L1)	12.0%	Families	17,850	20,442
Up and Coming Families (G2)	7.6%	Median Age	35.5	36.4
Flourishing Families (H1)	6.6%	Median Household Income	\$105,957	\$120,395

	2025 Consumer Spending	2030 Forecasted Demand	Projected Spending Growth
Apparel and Services	\$67,860,059	\$88,441,954	\$20,581,895
Men's	\$12,989,925	\$16,931,574	\$3,941,649
Women's	\$22,509,624	\$29,337,503	\$6,827,879
Children's	\$10,560,598	\$13,756,592	\$3,195,994
Footwear	\$15,176,767	\$19,769,115	\$4,592,348
Watches & Jewelry	\$5,405,503	\$7,058,276	\$1,652,773
Apparel Products and Services (1)	\$1,217,643	\$1,588,894	\$371,251
Computer			
Computers and Hardware for Home Use	\$6,219,104	\$8,105,694	\$1,886,590
Portable Memory	\$95,416	\$124,264	\$28,848
Computer Software	\$430,891	\$561,124	\$130,233
Computer Accessories	\$506,175	\$659,485	\$153,310
Education			
Educational Books/Supplies/Other Expenditures	\$2,603,566	\$3,393,513	\$789,947
Other School Supplies	\$2,491,842	\$3,248,193	\$756,351

Data Note: The Spending Potential Index (SPI) is household-based, and represents the amount spent for a product or service relative to a national average of 100.



Source: Esri forecasts for 2025 and 2030; Consumer Spending data are derived from the 2022 and 2023 Consumer Expenditure Surveys, Bureau of Labor Statistics.

	2025 Consumer Spending	2030 Forecasted Demand	Projected Spending Growth
Entertainment & Recreation	\$113,204,162	\$147,623,597	\$34,419,435
Fees and Admissions	\$28,025,986	\$36,617,513	\$8,591,527
Membership Fees for Clubs (2)	\$8,808,749	\$11,510,780	\$2,702,031
Fees for Participant Sports, excl. Trips	\$5,344,609	\$6,978,938	\$1,634,329
Tickets to Theatre/Operas/Concerts	\$3,098,271	\$4,050,205	\$951,934
Tickets to Movies	\$1,090,935	\$1,423,159	\$332,224
Tickets to Parks or Museums	\$1,296,418	\$1,691,962	\$395,544
Admission to Sporting Events, excl. Trips	\$2,913,047	\$3,799,864	\$886,817
Fees for Recreational Lessons	\$5,452,636	\$7,134,959	\$1,682,323
Dating Services	\$21,321	\$27,648	\$6,327
TV/Video/Audio	\$32,592,909	\$42,433,248	\$9,840,339
Cable and Satellite Television Services	\$16,242,920	\$21,143,592	\$4,900,672
Televisions	\$3,416,600	\$4,449,230	\$1,032,630
Satellite Dishes	\$36,378	\$47,290	\$10,912
VCRs, Video Cameras, and DVD Players	\$119,027	\$154,767	\$35,740
Miscellaneous Video Equipment	\$1,304,872	\$1,691,275	\$386,403
Video Cassettes and DVDs	\$105,796	\$137,727	\$31,931
Video Game Hardware/Accessories	\$1,270,887	\$1,653,869	\$382,982
Video Game Software	\$560,067	\$729,834	\$169,767
Rental/Streaming/Downloaded Video	\$5,576,553	\$7,261,301	\$1,684,748
Installation of Televisions	\$39,791	\$52,006	\$12,215
Audio (3)	\$3,862,114	\$5,037,239	\$1,175,125
Rental of TV/VCR/Radio/Sound Equipment	\$5,163	\$6,640	\$1,477
Repair of TV/Radio/Sound Equipment	\$52,740	\$68,479	\$15,739
Pets	\$27,731,584	\$36,139,920	\$8,408,336
Toys/Games/Crafts/Hobbies (4)	\$4,931,390	\$6,428,631	\$1,497,241
Recreational Vehicles and Fees (5)	\$6,146,303	\$8,022,317	\$1,876,014
Sports/Recreation/Exercise Equipment (6)	\$7,573,551	\$9,878,210	\$2,304,659
Photo Equipment and Supplies (7)	\$1,832,944	\$2,394,684	\$561,740
Reading (8)	\$3,116,345	\$4,070,004	\$953,659
Live Entertainment-for Catered Affairs	\$501,208	\$656,540	\$155,332
Rental of Party Supplies for Catered Affairs	\$751,942	\$982,530	\$230,588

Data Note: The Spending Potential Index (SPI) is household-based, and represents the amount spent for a product or service relative to a national average of 100.



Source: Esri forecasts for 2025 and 2030; Consumer Spending data are derived from the 2022 and 2023 Consumer Expenditure Surveys, Bureau of Labor Statistics.

	2025 Consumer Spending	2030 Forecasted Demand	Projected Spending Growth
Food	\$307,440,448	\$400,468,156	\$93,027,708
Food at Home	\$193,437,214	\$251,918,468	\$58,481,254
Bakery and Cereal Products	\$25,768,611	\$33,574,690	\$7,806,079
Meats, Poultry, Fish, and Eggs	\$39,529,829	\$51,452,248	\$11,922,419
Dairy Products	\$19,624,628	\$25,560,594	\$5,935,966
Fruits and Vegetables	\$32,951,589	\$42,937,511	\$9,985,922
Snacks and Other Food at Home (9)	\$75,562,557	\$98,393,426	\$22,830,869
Food Away from Home	\$114,003,233	\$148,549,687	\$34,546,454
Alcoholic Beverages	\$18,229,465	\$23,791,499	\$5,562,034
Financial			
Value of Stocks/Bonds/Mutual Funds	\$1,227,624,385	\$1,607,031,261	\$379,406,876
Value of Retirement Plans	\$4,232,842,483	\$5,535,047,028	\$1,302,204,545
Value of Other Financial Assets	\$389,698,545	\$508,510,415	\$118,811,870
Vehicle Loan Amount excluding Interest	\$106,389,445	\$138,417,711	\$32,028,266
Value of Credit Card Debt	\$84,498,703	\$110,129,296	\$25,630,593
Health			
Nonprescription Drugs	\$5,385,693	\$7,010,592	\$1,624,899
Prescription Drugs	\$10,487,761	\$13,655,966	\$3,168,205
Eyeglasses and Contact Lenses	\$3,478,343	\$4,537,559	\$1,059,216
Personal Care Products (10)	\$16,138,842	\$21,009,438	\$4,870,596
Smoking Products	\$10,492,110	\$13,601,916	\$3,109,806
Home			
Mortgage Payment and Basics (11)	\$414,587,823	\$541,306,813	\$126,718,990
Maintenance and Remodeling Services	\$137,212,656	\$179,129,199	\$41,916,543
Maintenance and Remodeling Materials (12)	\$25,296,065	\$32,983,859	\$7,687,794
Utilities, Fuel, and Public Services	\$157,485,390	\$204,928,923	\$47,443,533

Data Note: The Spending Potential Index (SPI) is household-based, and represents the amount spent for a product or service relative to a national average of 100.



Source: Esri forecasts for 2025 and 2030; Consumer Spending data are derived from the 2022 and 2023 Consumer Expenditure Surveys, Bureau of Labor Statistics.

	2025 Consumer Spending	2030 Forecasted Demand	Projected Spending Growth
Household Furnishings and Equipment			
Household Textiles (13)	\$3,147,991	\$4,100,381	\$952,390
Furniture	\$25,366,779	\$33,056,235	\$7,689,456
Rugs	\$1,088,812	\$1,421,743	\$332,931
Major Appliances (14)	\$14,679,081	\$19,127,900	\$4,448,819
Housewares (15)	\$2,538,298	\$3,305,432	\$767,134
Small Appliances	\$37,149,501	\$48,436,758	\$600,463
Luggage	\$681,973	\$889,972	\$207,999
Telephones and Accessories	\$2,017,915	\$2,631,268	\$613,353
Household Operations			
Child Care	\$18,452,423	\$24,105,787	\$5,653,364
Lawn/Garden (16)	\$18,511,470	\$24,141,351	\$5,629,881
Moving/Storage/Freight Express	\$3,034,834	\$3,956,316	\$921,482
Housekeeping Supplies (17)	\$22,684,191	\$29,538,072	\$6,853,881
Insurance			
Owners and Renters Insurance	\$25,305,849	\$32,951,258	\$7,645,409
Vehicle Insurance	\$60,019,046	\$78,041,621	\$18,022,575
Life/Other Insurance	\$19,755,111	\$25,773,531	\$6,018,420
Health Insurance	\$133,693,092	\$174,106,479	\$40,413,387
Transportation			
Payments on Vehicles excluding Leases	\$88,225,152	\$114,803,220	\$26,578,068
Gasoline, Diesel Fuel, & Electric Vehicle Charging	\$95,314,431	\$123,923,791	\$28,609,360
Vehicle Maintenance and Repairs	\$36,710,654	\$47,803,002	\$11,092,348
Travel			
Airline Fares	\$23,805,536	\$31,108,210	\$7,302,674
Lodging on Trips	\$31,002,158	\$40,495,218	\$9,493,060
Auto/Truck Rental on Trips	\$3,520,158	\$4,594,955	\$1,074,797
Food and Drink on Trips	\$23,770,506	\$31,022,725	\$7,252,219

Data Note: The Spending Potential Index (SPI) is household-based, and represents the amount spent for a product or service relative to a national average of 100.



Source: Esri forecasts for 2025 and 2030; Consumer Spending data are derived from the 2022 and 2023 Consumer Expenditure Surveys, Bureau of Labor Statistics.

- (1) Apparel Products and Services includes shoe repair and other shoe services, apparel laundry and dry cleaning, alteration, repair and tailoring of apparel, clothing rental and storage, and watch and jewelry repair.
- (2) Membership Fees for Clubs includes membership fees for social, recreational, and health clubs.
- (3) Audio includes satellite radio service, radios, stereos, sound components, equipment and accessories, digital audio players, records, CDs, audio tapes, streaming/downloaded audio, musical instruments and accessories, and rental and repair of musical instruments.
- (4) Toys and Games includes toys, games, arts and crafts, tricycles, playground equipment, arcade games, online entertainment and games, and stamp and coin collecting.
- (5) Recreational Vehicles & Fees includes docking and landing fees for boats and planes, payments on boats, trailers, campers and RVs, rental of boats, trailers, campers and RVs, and camp fees.
- (6) Sports/Recreation/Exercise Equipment includes exercise equipment and gear, game tables, bicycles, camping equipment, hunting and fishing equipment, winter sports equipment, water sports equipment, other sports equipment, and rental/repair of sports/recreation/exercise equipment.
- (7) Photo Equipment includes film, film processing, photographic equipment, rental and repair of photo equipment, and photographer fees.
- (8) Reading includes digital book readers, books, magazine and newspaper subscriptions, and single copies of magazines and newspapers.
- (9) Snacks and Other Food at Home includes candy, chewing gum, sugar, artificial sweeteners, jam, jelly, preserves, margarine, fats and oils, salad dressing, nondairy cream and milk, peanut butter, frozen prepared food, potato chips and other snacks, nuts, salt, spices, seasonings, olives, pickles, relishes, sauces, gravy, other condiments, soup, prepared salad, prepared dessert, baby food, miscellaneous prepared food, and nonalcoholic beverages.
- (10) Personal Care Products includes hair care products, nonelectric articles for hair, wigs, hairpieces, oral hygiene products, shaving needs, perfume, cosmetics, skincare, bath products, nail products, deodorant, feminine hygiene products, adult diapers, other miscellaneous care products and personal care appliances.
- (11) Mortgage Payment and Basics includes mortgage interest, mortgage principal, property taxes, homeowners insurance, and ground rent on owned dwellings.
- (12) Maintenance and Remodeling Materials includes supplies/tools/equipment for painting and wallpapering, plumbing supplies and equipment, electrical/heating/AC supplies, materials for roofing/gutters, materials for plaster/panel/siding, materials for patio/fence/brick work, landscaping materials, and insulation materials for owned homes.
- (13) Household Textiles includes bathroom linens, bedroom linens, kitchen linens, dining room linens, other linens, curtains, draperies, slipcovers and decorative pillows.
- (14) Major Appliances includes dishwashers, disposals, refrigerators, freezers, washers, dryers, stoves, ovens, microwaves, window air conditioners, electric floor cleaning equipment, sewing machines, and miscellaneous appliances.
- (15) Housewares includes flatware, dishes, cups glasses, serving pieces, nonelectric cookware, and tableware.
- (16) Lawn and Garden includes lawn and garden supplies, equipment and care service, indoor plants, fresh flowers, and repair/rental of lawn and garden equipment.
- (17) Housekeeping Supplies includes soaps and laundry detergents, cleaning products, toilet tissue, paper towels, napkins, paper/plastic/foil products, stationery, giftwrap supplies, postage, and delivery services.

