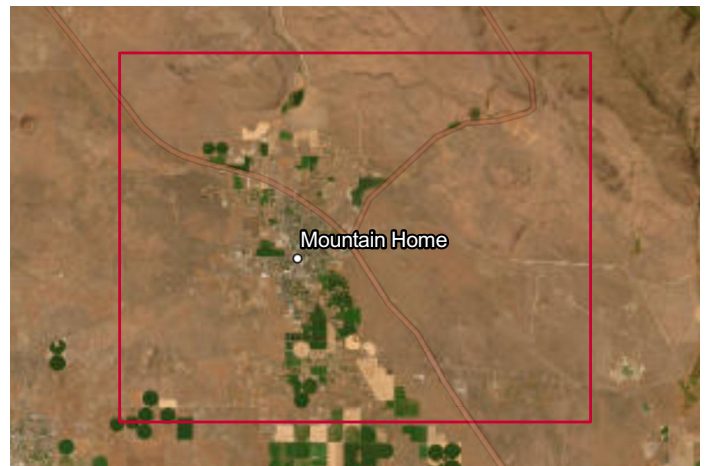
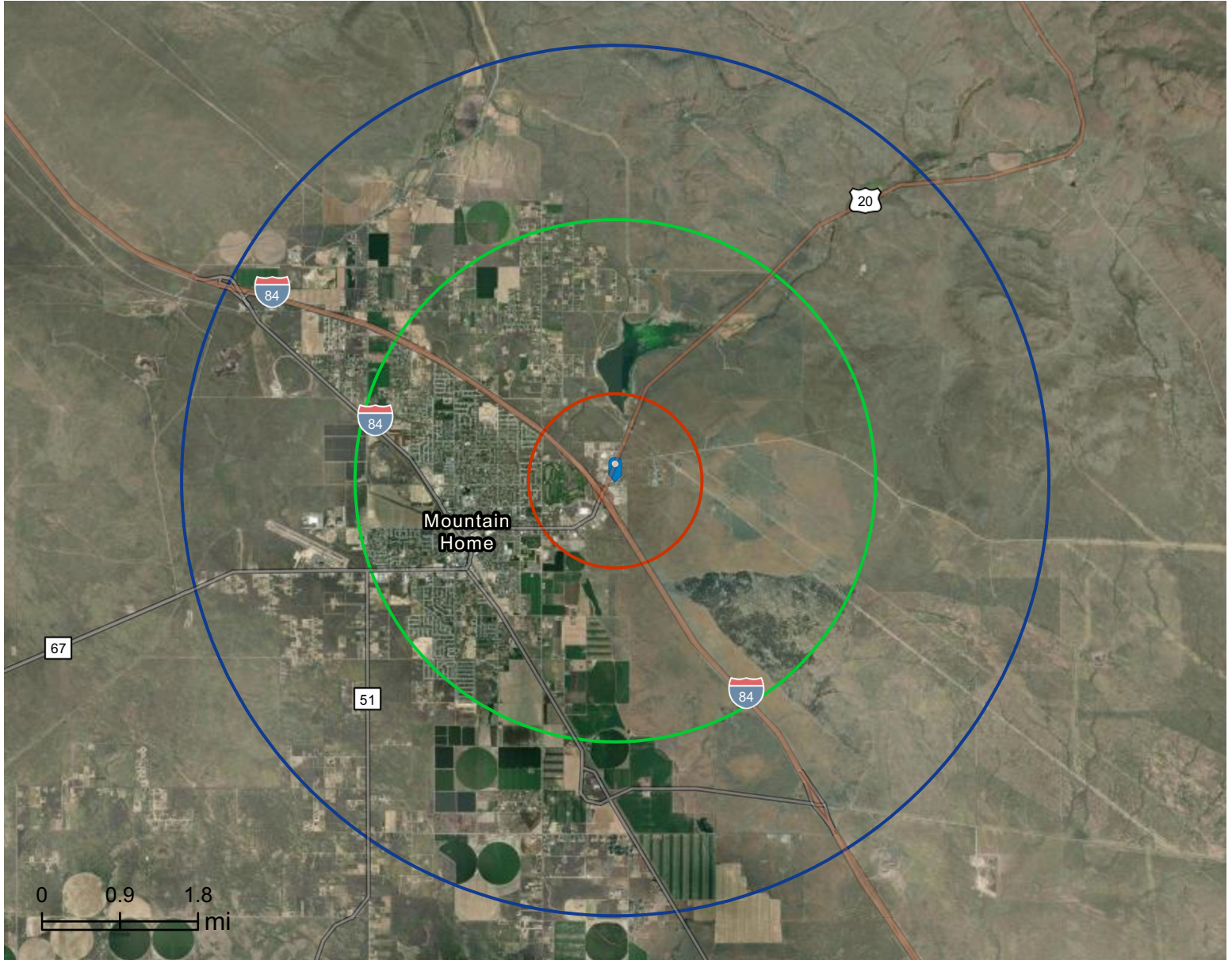


# Site Map

3150 Foothills Ave, Mountain Home, Idaho, 83647

Rings: 1, 3, 5 mile radii

Prepared by Esri  
Latitude: 43.14168  
Longitude: -115.66067



# Executive Summary

3150 Foothills Ave, Mountain Home, Idaho, 83647



Rings: 1, 3, 5 mile radii

Population	1 mile	3 miles	5 miles
2010 Population	497	17,263	18,736
2020 Population	546	18,645	20,321
2025 Population	515	19,467	21,250
2030 Population	518	19,878	21,765
2010-2020 Annual Rate	0.94%	0.77%	0.82%
2020-2025 Annual Rate	-1.11%	0.83%	0.86%
2025-2030 Annual Rate	0.12%	0.42%	0.48%

Age	1 mile	3 miles	5 miles
2025 Median Age	37.0	35.0	35.3
U.S. median age is 39.1			

Race and Ethnicity	1 mile	3 miles	5 miles
White Alone	77.7%	73.9%	74.1%
Black Alone	1.8%	2.0%	2.0%
American Indian Alone	1.8%	1.3%	1.3%
Asian Alone	2.7%	3.0%	3.0%
Pacific Islander Alone	0.6%	0.5%	0.4%
Some Other Race Alone	4.8%	8.2%	8.2%
Two or More Races	10.7%	11.1%	11.0%
Hispanic Origin	14.4%	18.1%	18.0%
Diversity Index	53.4	60.1	59.9

Households	1 mile	3 miles	5 miles
2010 Total Households	141	6,755	7,317
2020 Total Households	153	7,246	7,881
2025 Total Households	156	7,668	8,324
2030 Total Households	157	7,859	8,557
2010-2020 Annual Rate	0.82%	0.70%	0.75%
2020-2025 Annual Rate	0.37%	1.08%	1.05%
2025-2030 Annual Rate	0.13%	0.49%	0.55%
2025 Average Household Size	3.04	2.50	2.52
Wealth Index	64	53	55

<b>Mortgage Income</b>	<b>1 mile</b>	<b>3 miles</b>	<b>5 miles</b>
2025 Percent of Income for Mortgage	33.6%	33.6%	34.0%
<b>Median Household Income</b>			
2025 Median Household Income	\$62,065	\$60,623	\$61,390
2030 Median Household Income	\$65,299	\$66,410	\$67,214
2025-2030 Annual Rate	1.02%	1.84%	1.83%
<b>Average Household Income</b>			
2025 Average Household Income	\$79,355	\$75,271	\$76,285
2030 Average Household Income	\$90,081	\$83,415	\$84,450
<b>Per Capita Income</b>			
2025 Per Capita Income	\$32,832	\$29,655	\$29,850
2030 Per Capita Income	\$37,272	\$32,989	\$33,164
2025-2030 Annual Rate	2.57%	2.15%	2.13%
<b>Income Equality</b>			
2025 Gini Index	45.9	43.6	43.8
<b>Socioeconomic Status</b>			
2025 Socioeconomic Status Index	49.4	44.9	45.2
<b>Housing Unit Summary</b>			
Housing Affordability Index	72	73	72
2010 Total Housing Units	147	7,488	8,104
2010 Owner Occupied Hus (%)	62.4%	64.4%	65.4%
2010 Renter Occupied Hus (%)	36.9%	35.6%	34.6%
2010 Vacant Housing Units (%)	4.1%	9.8%	9.7%
2020 Housing Units	155	7,733	8,409
2020 Owner Occupied HUs (%)	63.4%	65.3%	66.3%
2020 Renter Occupied HUs (%)	36.6%	34.7%	33.7%
Vacant Housing Units	7.1%	6.4%	6.4%
2025 Housing Units	156	8,104	8,811
Owner Occupied Housing Units	65.4%	67.1%	68.2%
Renter Occupied Housing Units	34.6%	32.9%	31.9%
Vacant Housing Units	0.0%	5.4%	5.5%
2030 Total Housing Units	157	8,290	9,040
2030 Owner Occupied Housing Units	105	5,407	5,977
2030 Renter Occupied Housing Units	52	2,452	2,580
2030 Vacant Housing Units	0	431	483

# Business Summary Report (NAICS)

3150 Foothills Ave, Mountain Home, Idaho, 83647



Rings: 1, 3, 5 mile radii

Data for all businesses in area	1 mile	3 miles	5 miles
Total Businesses	78	567	607
Total Employees	1,203	5,857	6,176
Total Population	515	19,467	21,250
Employee/Population Ratio (per 100)	233.6	30.1	29.1

by NAICS Codes	Businesses		Employees		Businesses		Employees		Businesses		Employees	
	Number	%	Number	%	Number	%	Number	%	Number	%	Number	%
Agriculture, Forestry, Fishing & Hunting (11)	2	2.6%	37	3.1%	12	2.1%	237	4.0%	14	2.3%	252	4.1%
Mining (21)	0	0.0%	0	0.0%	1	0.2%	3	0.1%	1	0.2%	3	0.1%
Utilities (22)	1	1.3%	14	1.2%	4	0.7%	32	0.6%	4	0.7%	32	0.5%
Construction (23)	3	3.9%	9	0.8%	28	4.9%	200	3.4%	34	5.6%	242	3.9%
Building Construction	0	0.0%	0	0.0%	6	1.1%	13	0.2%	9	1.5%	26	0.4%
Heavy/Civil Eng Construction	1	1.3%	2	0.2%	1	0.2%	10	0.2%	2	0.3%	31	0.5%
Specialty Trade Contractor	3	3.9%	7	0.6%	21	3.7%	176	3.0%	23	3.8%	185	3.0%
Manufacturing (31-33)	3	3.9%	66	5.5%	15	2.6%	169	2.9%	17	2.8%	297	4.8%
Wholesale Trade (42)	2	2.6%	24	2.0%	12	2.1%	104	1.8%	15	2.5%	113	1.8%
Durable Goods	2	2.6%	18	1.5%	9	1.6%	81	1.4%	11	1.8%	86	1.4%
Nondurable Goods	1	1.3%	6	0.5%	3	0.5%	23	0.4%	4	0.7%	27	0.4%
Trade Broker	0	0.0%	0	0.0%	0	0.0%	0	0.0%	0	0.0%	0	0.0%



**Source:** This infographic contains data provided by Esri-Data Axle (2025), Esri (2025). Data note: Not all NAICS subcategories for a 2 digit major category are being shown.

# Business Summary Report (NAICS)

3150 Foothills Ave, Mountain Home, Idaho, 83647



Rings: 1, 3, 5 mile radii

by NAICS Codes	1 mile				3 miles				5 miles			
	Businesses		Employees		Businesses		Employees		Businesses		Employees	
	Number	%	Number	%	Number	%	Number	%	Number	%	Number	%
Retail Trade (44-45)	13	16.7%	471	39.1%	74	13.1%	1,192	20.4%	78	12.8%	1,212	19.6%
Motor Vehicle & Parts Dealers	4	5.1%	108	9.0%	16	2.8%	264	4.5%	16	2.6%	266	4.3%
Furniture & Home Furnishing Stores	0	0.0%	0	0.0%	2	0.3%	18	0.3%	3	0.5%	18	0.3%
Electronics & Appliance Stores	0	0.0%	0	0.0%	0	0.0%	0	0.0%	0	0.0%	0	0.0%
Building & Garden Equipment	1	1.3%	4	0.3%	9	1.6%	59	1.0%	10	1.6%	59	1.0%
Food & Beverage Stores	2	2.6%	36	3.0%	8	1.4%	186	3.2%	9	1.5%	193	3.1%
Health & Personal Care Stores	2	2.6%	13	1.1%	9	1.6%	57	1.0%	9	1.5%	57	0.9%
Gasoline Stations	1	1.3%	38	3.2%	9	1.6%	100	1.7%	10	1.6%	107	1.7%
Clothing, Shoe and Jewellery Stores	1	1.3%	6	0.5%	5	0.9%	17	0.3%	5	0.8%	17	0.3%
Sporting Goods, Hobby & Music Stores	1	1.3%	2	0.2%	12	2.1%	36	0.6%	12	2.0%	37	0.6%
General Merchandise Stores	1	1.3%	264	21.9%	4	0.7%	456	7.8%	5	0.8%	458	7.4%
Transportation & Warehousing (48-49)	1	1.3%	5	0.4%	20	3.5%	148	2.5%	22	3.6%	151	2.4%
Truck Transportation	1	1.3%	2	0.2%	6	1.1%	32	0.6%	6	1.0%	33	0.5%
Information (51)	4	5.1%	14	1.2%	10	1.8%	47	0.8%	10	1.6%	47	0.8%
Finance & Insurance (52)	2	2.6%	5	0.4%	29	5.1%	240	4.1%	29	4.8%	240	3.9%
Central Bank/Credit & Related Activities	2	2.6%	4	0.3%	14	2.5%	199	3.4%	14	2.3%	199	3.2%
Securities & Commodity Contracts	1	1.3%	1	0.1%	6	1.1%	14	0.2%	6	1.0%	14	0.2%
Funds, Trusts & Other Financial	0	0.0%	0	0.0%	9	1.6%	27	0.5%	9	1.5%	27	0.4%
Real Estate, Rental & Leasing (53)	3	3.9%	13	1.1%	37	6.5%	170	2.9%	40	6.6%	177	2.9%
Professional, Scientific & Tech Services (54)	4	5.1%	55	4.6%	33	5.8%	188	3.2%	35	5.8%	196	3.2%
Legal Services	1	1.3%	46	3.8%	7	1.2%	95	1.6%	7	1.1%	96	1.6%



**Source:** This infographic contains data provided by Esri-Data Axle (2025), Esri (2025). Data note: Not all NAICS subcategories for a 2 digit major category are being shown.

# Business Summary Report (NAICS)

3150 Foothills Ave, Mountain Home, Idaho, 83647



Rings: 1, 3, 5 mile radii

by NAICS Codes	1 mile				3 miles				5 miles			
	Businesses		Employees		Businesses		Employees		Businesses		Employees	
	Number	%	Number	%	Number	%	Number	%	Number	%	Number	%
Management of Companies (55)	0	0.0%	0	0.0%	0	0.0%	0	0.0%	0	0.0%	0	0.0%
Administrative, Support & Waste Mgmt (56)	1	1.3%	2	0.2%	13	2.3%	30	0.5%	17	2.8%	42	0.7%
Educational Services (61)	2	2.6%	48	4.0%	18	3.2%	587	10.0%	18	3.0%	588	9.5%
Health Care & Social Assistance (62)	9	11.5%	114	9.5%	67	11.8%	1,090	18.6%	68	11.2%	1,107	17.9%
Ambulatory Health Care	4	5.1%	81	6.7%	42	7.4%	511	8.7%	42	6.9%	512	8.3%
Hospital	1	1.3%	2	0.2%	5	0.9%	398	6.8%	5	0.8%	398	6.4%
Nursing/Residential Care	0	0.0%	0	0.0%	5	0.9%	71	1.2%	5	0.8%	71	1.1%
Social Assistance	4	5.1%	31	2.6%	15	2.6%	111	1.9%	16	2.6%	125	2.0%
Arts, Entertainment & Recreation (71)	2	2.6%	5	0.4%	10	1.8%	43	0.7%	11	1.8%	50	0.8%
Accommodation & Food Services (72)	12	15.4%	203	16.9%	49	8.6%	682	11.6%	50	8.2%	703	11.4%
Accommodation	3	3.9%	54	4.5%	11	1.9%	154	2.6%	11	1.8%	156	2.5%
Food & Drinking Places	9	11.5%	149	12.4%	38	6.7%	527	9.0%	39	6.4%	547	8.9%
Other Services Except Public Admin (81)	9	11.5%	55	4.6%	70	12.3%	293	5.0%	76	12.5%	306	5.0%
Repair & Maintenance	3	3.9%	42	3.5%	19	3.4%	112	1.9%	22	3.6%	120	1.9%
Auto Repair & Maintenance	2	2.6%	37	3.1%	15	2.6%	96	1.6%	17	2.8%	103	1.7%
Personal & Laundry Service	2	2.6%	8	0.7%	20	3.5%	72	1.2%	21	3.5%	75	1.2%
Civic and Other Orgs	4	5.1%	5	0.4%	31	5.5%	109	1.9%	32	5.3%	112	1.8%
Public Administration (92)	5	6.4%	63	5.2%	52	9.2%	395	6.7%	53	8.7%	410	6.6%
Unclassified Establishments (99)	1	1.3%	0	0.0%	16	2.8%	8	0.1%	16	2.6%	8	0.1%
<b>Total (11-99)</b>	<b>78</b>	<b>100.0%</b>	<b>1,203</b>	<b>100.0%</b>	<b>567</b>	<b>100.0%</b>	<b>5,857</b>	<b>100.0%</b>	<b>607</b>	<b>100.0%</b>	<b>6,176</b>	<b>100.0%</b>



**Source:** This infographic contains data provided by Esri-Data Axle (2025), Esri (2025). Data note: Not all NAICS subcategories for a 2 digit major category are being shown.

# Business Summary Report (SIC)

3150 Foothills Ave, Mountain Home, Idaho, 83647



Rings: 1, 3, 5 mile radii

Data for all businesses in area	1 mile	3 miles	5 miles
Total Businesses	78	567	607
Total Employees	1,203	5,857	6,176
Total Population	515	19,467	21,250
Employee/Population Ratio (per 100)	233.6	30.1	29.1

by SIC Codes	Businesses		Employees		Businesses		Employees		Businesses		Employees	
	Number	%	Number	%	Number	%	Number	%	Number	%	Number	%
Agriculture & Mining (01-14)	2	2.6%	39	3.2%	18	3.2%	269	4.6%	23	3.8%	292	4.7%
Construction (15-17)	3	3.9%	7	0.6%	27	4.8%	196	3.4%	33	5.4%	238	3.9%
Manufacturing (20-39)	2	2.6%	57	4.7%	13	2.3%	161	2.8%	15	2.5%	289	4.7%
Transportation (40-47)	3	3.9%	29	2.4%	27	4.8%	218	3.7%	30	4.9%	225	3.6%
Communication (48)	3	3.9%	11	0.9%	6	1.1%	22	0.4%	6	1.0%	22	0.4%
Utility (49)	1	1.3%	14	1.2%	4	0.7%	33	0.6%	6	1.0%	40	0.7%
Wholesale Trade (50-51)	2	2.6%	24	2.0%	12	2.1%	104	1.8%	15	2.5%	113	1.8%
Retail Trade Summary (52-59)	23	29.5%	630	52.4%	117	20.6%	1,749	29.9%	121	19.9%	1,790	29.0%
Home Improvement	1	1.3%	4	0.3%	9	1.6%	59	1.0%	10	1.6%	59	1.0%
General Merchandise Stores	1	1.3%	264	21.9%	2	0.3%	452	7.7%	2	0.3%	452	7.3%
Food Stores	4	5.1%	47	3.9%	13	2.3%	214	3.6%	14	2.3%	221	3.6%
Auto Dealers & Gas Stations	5	6.4%	146	12.1%	25	4.4%	364	6.2%	26	4.3%	374	6.1%
Apparel & Accessory Stores	1	1.3%	6	0.5%	4	0.7%	15	0.3%	4	0.7%	15	0.2%
Furniture & Home Furnishings	0	0.0%	0	0.0%	2	0.3%	18	0.3%	3	0.5%	19	0.3%
Eating & Drinking Places	9	11.5%	149	12.4%	38	6.7%	527	9.0%	39	6.4%	547	8.9%
Miscellaneous Retail	2	2.6%	13	1.1%	23	4.1%	101	1.7%	25	4.1%	104	1.7%

**Source:** This infographic contains data provided by Esri-Data Axle (2025), Esri (2025).

# Business Summary Report (SIC)

3150 Foothills Ave, Mountain Home, Idaho, 83647



Rings: 1, 3, 5 mile radii

by SIC Codes	1 mile				3 miles				5 miles			
	Businesses		Employees		Businesses		Employees		Businesses		Employees	
	Number	%	Number	%	Number	%	Number	%	Number	%	Number	%
Finance, Insurance, Real Estate (60-67)	6	7.7%	57	4.7%	52	9.2%	388	6.6%	53	8.7%	391	6.3%
Banks, Savings & Lending	2	2.6%	5	0.4%	14	2.5%	196	3.4%	15	2.5%	197	3.2%
Securities Brokers	1	1.3%	1	0.1%	5	0.9%	12	0.2%	5	0.8%	12	0.2%
Insurance Carriers & Agents	0	0.0%	0	0.0%	9	1.6%	27	0.5%	9	1.5%	27	0.4%
Real Estate, Investment Offices	3	3.9%	51	4.2%	24	4.2%	153	2.6%	24	4.0%	155	2.5%
Services Summary (70-89)	27	34.6%	273	22.7%	224	39.5%	2,310	39.4%	236	38.9%	2,353	38.1%
Hotels & Lodging	3	3.9%	54	4.5%	11	1.9%	154	2.6%	11	1.8%	156	2.5%
Automotive Services	2	2.6%	37	3.1%	26	4.6%	145	2.5%	30	4.9%	155	2.5%
Movies & Amusements	2	2.6%	5	0.4%	8	1.4%	33	0.6%	9	1.5%	36	0.6%
Health Services	4	5.1%	66	5.5%	47	8.3%	914	15.6%	47	7.7%	915	14.8%
Legal Services	1	1.3%	2	0.2%	5	0.9%	18	0.3%	5	0.8%	18	0.3%
Education Inst. & Libraries	2	2.6%	50	4.2%	17	3.0%	588	10.0%	17	2.8%	589	9.5%
Other Services	12	15.4%	59	4.9%	111	19.6%	458	7.8%	117	19.3%	484	7.8%
Government (91-97)	5	6.4%	63	5.2%	52	9.2%	398	6.8%	53	8.7%	415	6.7%
Unclassified Establishments (99)	1	1.3%	0	0.0%	16	2.8%	8	0.1%	16	2.6%	8	0.1%
Totals (01-99)	78	100.0%	1,203	100.0%	567	100.0%	5,857	100.0%	607	100.0%	6,176	100.0%



**Source:** This infographic contains data provided by Esri-Data Axle (2025), Esri (2025).