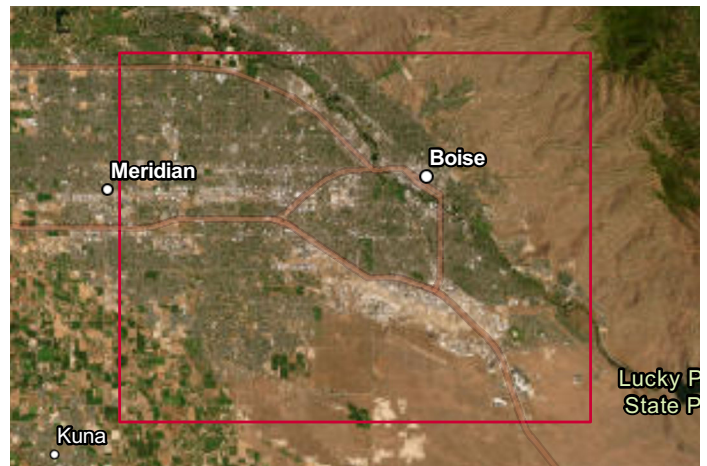
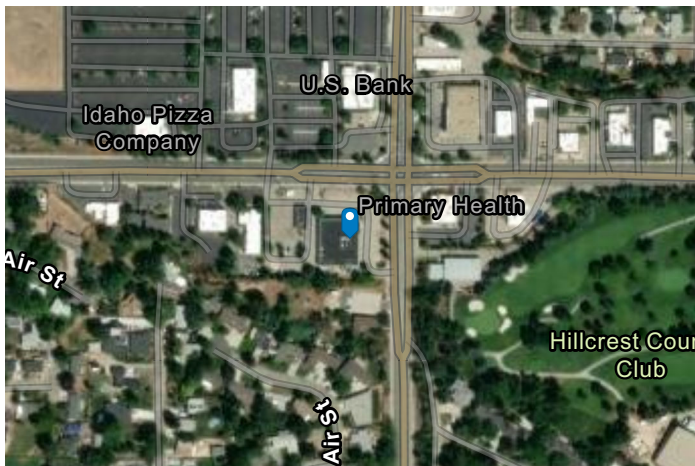
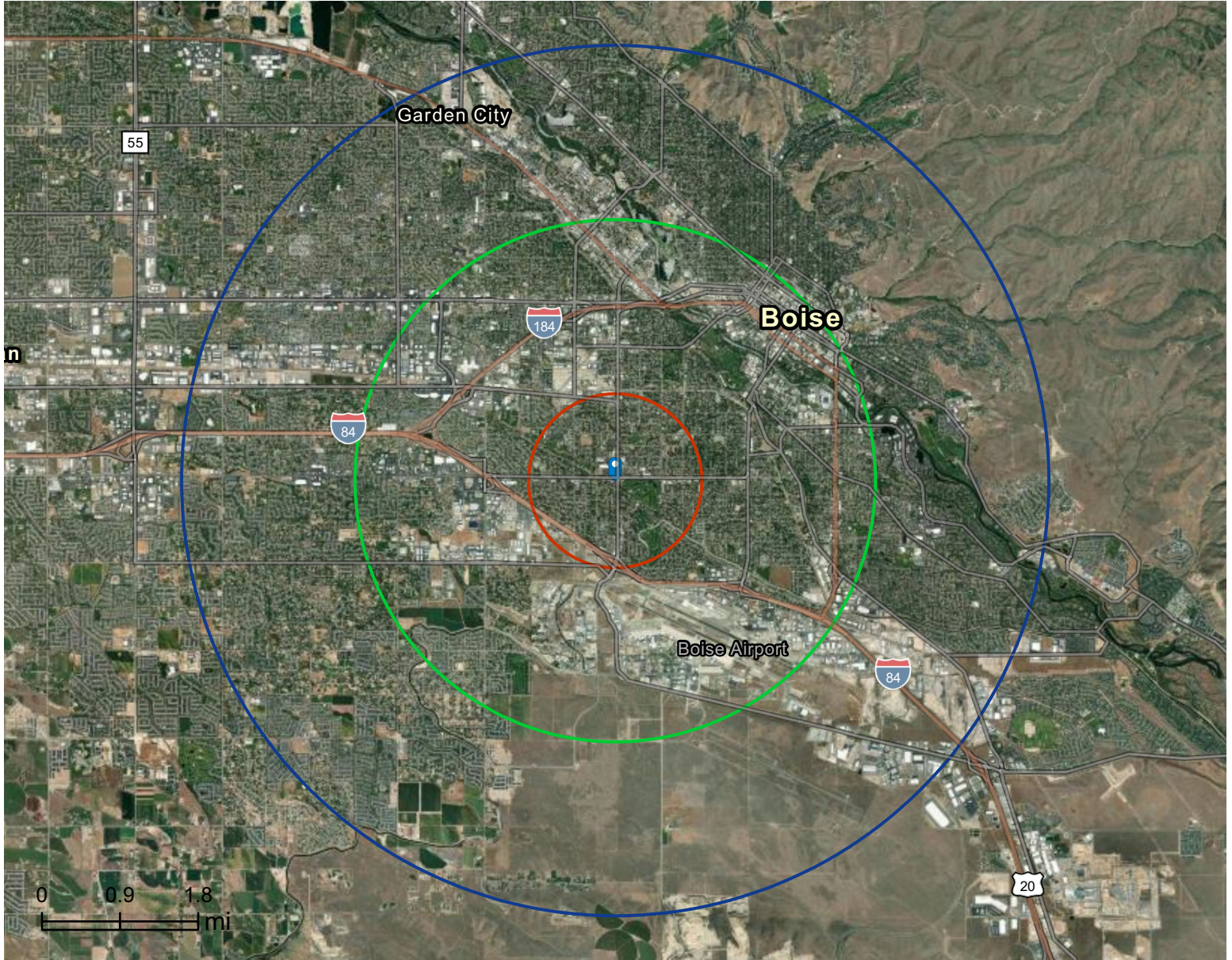


# Site Map

5005 W Overland Rd, Boise, Idaho, 83705 2  
5005 W Overland Rd, Boise, Idaho, 83705  
Rings: 1, 3, 5 mile radii

Prepared by Esri  
Latitude: 43.58929  
Longitude: -116.24418



# Executive Summary

5005 W Overland Rd, Boise, Idaho, 83705 2

5005 W Overland Rd, Boise, Idaho, 83705

Rings: 1, 3, 5 mile radii



| Population            | 1 mile | 3 miles | 5 miles |
|-----------------------|--------|---------|---------|
| 2010 Population       | 13,353 | 75,519  | 190,260 |
| 2020 Population       | 13,866 | 84,987  | 213,593 |
| 2025 Population       | 13,898 | 87,939  | 221,334 |
| 2030 Population       | 14,356 | 94,665  | 234,688 |
| 2010-2020 Annual Rate | 0.38%  | 1.19%   | 1.16%   |
| 2020-2025 Annual Rate | 0.04%  | 0.65%   | 0.68%   |
| 2025-2030 Annual Rate | 0.65%  | 1.48%   | 1.18%   |

| Age                     | 1 mile | 3 miles | 5 miles |
|-------------------------|--------|---------|---------|
| 2025 Median Age         | 37.0   | 34.4    | 37.3    |
| U.S. median age is 39.1 |        |         |         |

| Race and Ethnicity     | 1 mile | 3 miles | 5 miles |
|------------------------|--------|---------|---------|
| White Alone            | 77.1%  | 76.6%   | 78.6%   |
| Black Alone            | 3.8%   | 3.3%    | 2.8%    |
| American Indian Alone  | 1.0%   | 0.9%    | 0.8%    |
| Asian Alone            | 3.1%   | 3.2%    | 3.6%    |
| Pacific Islander Alone | 0.3%   | 0.4%    | 0.3%    |
| Some Other Race Alone  | 5.3%   | 6.1%    | 4.7%    |
| Two or More Races      | 9.3%   | 9.6%    | 9.3%    |
| Hispanic Origin        | 11.8%  | 12.9%   | 11.2%   |
| Diversity Index        | 51.8   | 53.4    | 49.5    |

| Households                  | 1 mile | 3 miles | 5 miles |
|-----------------------------|--------|---------|---------|
| 2010 Total Households       | 5,921  | 33,106  | 79,921  |
| 2020 Total Households       | 6,073  | 36,639  | 88,778  |
| 2025 Total Households       | 6,262  | 39,098  | 94,508  |
| 2030 Total Households       | 6,563  | 42,978  | 101,952 |
| 2010-2020 Annual Rate       | 0.25%  | 1.02%   | 1.06%   |
| 2020-2025 Annual Rate       | 0.59%  | 1.24%   | 1.20%   |
| 2025-2030 Annual Rate       | 0.94%  | 1.91%   | 1.53%   |
| 2025 Average Household Size | 2.18   | 2.13    | 2.28    |
| Wealth Index                | 69     | 62      | 90      |

| <b>Mortgage Income</b>              | <b>1 mile</b> | <b>3 miles</b> | <b>5 miles</b> |
|-------------------------------------|---------------|----------------|----------------|
| 2025 Percent of Income for Mortgage | 47.2%         | 45.7%          | 41.2%          |
| <b>Median Household Income</b>      |               |                |                |
| 2025 Median Household Income        | \$65,535      | \$67,769       | \$81,644       |
| 2030 Median Household Income        | \$74,467      | \$77,424       | \$93,554       |
| 2025-2030 Annual Rate               | 2.59%         | 2.70%          | 2.76%          |
| <b>Average Household Income</b>     |               |                |                |
| 2025 Average Household Income       | \$96,007      | \$89,891       | \$112,210      |
| 2030 Average Household Income       | \$107,189     | \$102,414      | \$125,377      |
| <b>Per Capita Income</b>            |               |                |                |
| 2025 Per Capita Income              | \$43,216      | \$40,024       | \$47,935       |
| 2030 Per Capita Income              | \$48,973      | \$46,660       | \$54,463       |
| 2025-2030 Annual Rate               | 2.53%         | 3.12%          | 2.59%          |
| <b>Income Equality</b>              |               |                |                |
| 2025 Gini Index                     | 44.1          | 43.9           | 44.4           |
| <b>Socioeconomic Status</b>         |               |                |                |
| 2025 Socioeconomic Status Index     | 48.2          | 48.2           | 52.1           |
| <b>Housing Unit Summary</b>         |               |                |                |
| Housing Affordability Index         | 53            | 55             | 61             |
| 2010 Total Housing Units            | 6,462         | 36,322         | 86,552         |
| 2010 Owner Occupied Hus (%)         | 52.6%         | 48.9%          | 59.0%          |
| 2010 Renter Occupied Hus (%)        | 47.4%         | 51.1%          | 41.0%          |
| 2010 Vacant Housing Units (%)       | 8.4%          | 8.8%           | 7.7%           |
| 2020 Housing Units                  | 6,416         | 38,785         | 93,337         |
| 2020 Owner Occupied HUs (%)         | 53.4%         | 47.8%          | 58.6%          |
| 2020 Renter Occupied HUs (%)        | 46.6%         | 52.2%          | 41.4%          |
| Vacant Housing Units                | 5.9%          | 5.6%           | 4.9%           |
| 2025 Housing Units                  | 6,628         | 41,144         | 98,765         |
| Owner Occupied Housing Units        | 56.0%         | 48.7%          | 60.0%          |
| Renter Occupied Housing Units       | 44.0%         | 51.3%          | 40.0%          |
| Vacant Housing Units                | 5.5%          | 5.0%           | 4.3%           |
| 2030 Total Housing Units            | 6,945         | 45,017         | 106,293        |
| 2030 Owner Occupied Housing Units   | 3,720         | 20,944         | 61,544         |
| 2030 Renter Occupied Housing Units  | 2,843         | 22,034         | 40,408         |
| 2030 Vacant Housing Units           | 382           | 2,039          | 4,341          |

# Business Summary Report (NAICS)

5005 W Overland Rd, Boise, Idaho, 83705 2

5005 W Overland Rd, Boise, Idaho, 83705

Rings: 1, 3, 5 mile radii



| Data for all businesses in area     | 1 mile | 3 miles | 5 miles |
|-------------------------------------|--------|---------|---------|
| Total Businesses                    | 689    | 7,607   | 12,195  |
| Total Employees                     | 5,539  | 113,672 | 170,135 |
| Total Population                    | 13,898 | 87,939  | 221,334 |
| Employee/Population Ratio (per 100) | 39.9   | 129.3   | 76.9    |

| by NAICS Codes                                | Businesses |      | Employees |      | Businesses |      | Employees |      | Businesses |      | Employees |      |
|---|------------|------|-----------|------|------------|------|-----------|------|------------|------|-----------|------|
|   | Number     | %    | Number    | %    | Number     | %    | Number    | %    | Number     | %    | Number    | %    |
| Agriculture, Forestry, Fishing & Hunting (11) | 6          | 0.9% | 22        | 0.4% | 33         | 0.4% | 181       | 0.2% | 57         | 0.5% | 282       | 0.2% |
| Mining (21)                                   | 1          | 0.1% | 3         | 0.1% | 9          | 0.1% | 81        | 0.1% | 17         | 0.1% | 105       | 0.1% |
| Utilities (22)                                | 0          | 0.0% | 2         | 0.0% | 17         | 0.2% | 1,596     | 1.4% | 26         | 0.2% | 1,661     | 1.0% |
| Construction (23)                             | 44         | 6.4% | 392       | 7.1% | 451        | 5.9% | 3,554     | 3.1% | 891        | 7.3% | 6,425     | 3.8% |
| Building Construction                         | 12         | 1.7% | 155       | 2.8% | 158        | 2.1% | 1,062     | 0.9% | 300        | 2.5% | 1,710     | 1.0% |
| Heavy/Civil Eng Construction                  | 0          | 0.0% | 8         | 0.1% | 42         | 0.6% | 526       | 0.5% | 69         | 0.6% | 886       | 0.5% |
| Specialty Trade Contractor                    | 32         | 4.6% | 229       | 4.1% | 251        | 3.3% | 1,966     | 1.7% | 522        | 4.3% | 3,829     | 2.3% |
| Manufacturing (31-33)                         | 15         | 2.2% | 145       | 2.6% | 263        | 3.5% | 5,959     | 5.2% | 446        | 3.7% | 9,557     | 5.6% |
| Wholesale Trade (42)                          | 23         | 3.3% | 228       | 4.1% | 232        | 3.0% | 3,813     | 3.4% | 407        | 3.3% | 6,555     | 3.9% |
| Durable Goods                                 | 17         | 2.5% | 180       | 3.3% | 177        | 2.3% | 2,845     | 2.5% | 320        | 2.6% | 4,561     | 2.7% |
| Nondurable Goods                              | 3          | 0.4% | 33        | 0.6% | 45         | 0.6% | 780       | 0.7% | 73         | 0.6% | 1,517     | 0.9% |
| Trade Broker                                  | 3          | 0.4% | 15        | 0.3% | 10         | 0.1% | 188       | 0.2% | 14         | 0.1% | 478       | 0.3% |



**Source:** This infographic contains data provided by Esri-Data Axle (2025), Esri (2025). Data note: Not all NAICS subcategories for a 2 digit major category are being shown.

# Business Summary Report (NAICS)

5005 W Overland Rd, Boise, Idaho, 83705 2  
 5005 W Overland Rd, Boise, Idaho, 83705  
 Rings: 1, 3, 5 mile radii



| by NAICS Codes                                | 1 mile     |       |           |       | 3 miles    |       |           |       | 5 miles    |       |           |       |
|---|------------|-------|-----------|-------|------------|-------|-----------|-------|------------|-------|-----------|-------|
|   | Businesses |       | Employees |       | Businesses |       | Employees |       | Businesses |       | Employees |       |
|   | Number     | %     | Number    | %     | Number     | %     | Number    | %     | Number     | %     | Number    | %     |
| Retail Trade (44-45)                          | 77         | 11.2% | 802       | 14.5% | 912        | 12.0% | 11,538    | 10.2% | 1,452      | 11.9% | 21,882    | 12.9% |
| Motor Vehicle & Parts Dealers                 | 14         | 2.0%  | 149       | 2.7%  | 121        | 1.6%  | 1,847     | 1.6%  | 216        | 1.8%  | 3,794     | 2.2%  |
| Furniture & Home Furnishing Stores            | 2          | 0.3%  | 39        | 0.7%  | 46         | 0.6%  | 472       | 0.4%  | 76         | 0.6%  | 767       | 0.5%  |
| Electronics & Appliance Stores                | 1          | 0.1%  | 3         | 0.1%  | 29         | 0.4%  | 322       | 0.3%  | 45         | 0.4%  | 485       | 0.3%  |
| Building & Garden Equipment                   | 5          | 0.7%  | 50        | 0.9%  | 64         | 0.8%  | 910       | 0.8%  | 116        | 0.9%  | 1,722     | 1.0%  |
| Food & Beverage Stores                        | 13         | 1.9%  | 374       | 6.8%  | 124        | 1.6%  | 2,061     | 1.8%  | 203        | 1.7%  | 7,585     | 4.5%  |
| Health & Personal Care Stores                 | 5          | 0.7%  | 42        | 0.8%  | 74         | 1.0%  | 520       | 0.5%  | 109        | 0.9%  | 724       | 0.4%  |
| Gasoline Stations                             | 4          | 0.6%  | 26        | 0.5%  | 33         | 0.4%  | 314       | 0.3%  | 57         | 0.5%  | 511       | 0.3%  |
| Clothing, Shoe and Jewellery Stores           | 8          | 1.2%  | 22        | 0.4%  | 130        | 1.7%  | 1,240     | 1.1%  | 164        | 1.3%  | 1,402     | 0.8%  |
| Sporting Goods, Hobby & Music Stores          | 17         | 2.5%  | 74        | 1.3%  | 189        | 2.5%  | 1,506     | 1.3%  | 301        | 2.5%  | 2,204     | 1.3%  |
| General Merchandise Stores                    | 7          | 1.0%  | 24        | 0.4%  | 102        | 1.3%  | 2,345     | 2.1%  | 164        | 1.3%  | 2,688     | 1.6%  |
| Transportation & Warehousing (48-49)          | 12         | 1.7%  | 70        | 1.3%  | 148        | 1.9%  | 1,526     | 1.3%  | 225        | 1.9%  | 2,179     | 1.3%  |
| Truck Transportation                          | 6          | 0.9%  | 35        | 0.6%  | 48         | 0.6%  | 475       | 0.4%  | 73         | 0.6%  | 692       | 0.4%  |
| Information (51)                              | 15         | 2.2%  | 101       | 1.8%  | 175        | 2.3%  | 3,033     | 2.7%  | 270        | 2.2%  | 4,757     | 2.8%  |
| Finance & Insurance (52)                      | 44         | 6.4%  | 173       | 3.1%  | 393        | 5.2%  | 2,763     | 2.4%  | 623        | 5.1%  | 4,111     | 2.4%  |
| Central Bank/Credit & Related Activities      | 9          | 1.3%  | 49        | 0.9%  | 130        | 1.7%  | 1,125     | 1.0%  | 217        | 1.8%  | 1,627     | 1.0%  |
| Securities & Commodity Contracts              | 11         | 1.6%  | 29        | 0.5%  | 145        | 1.9%  | 762       | 0.7%  | 223        | 1.8%  | 1,124     | 0.7%  |
| Funds, Trusts & Other Financial               | 24         | 3.5%  | 95        | 1.7%  | 118        | 1.6%  | 876       | 0.8%  | 184        | 1.5%  | 1,359     | 0.8%  |
| Real Estate, Rental & Leasing (53)            | 37         | 5.4%  | 223       | 4.0%  | 394        | 5.2%  | 4,461     | 3.9%  | 636        | 5.2%  | 5,833     | 3.4%  |
| Professional, Scientific & Tech Services (54) | 79         | 11.5% | 370       | 6.7%  | 951        | 12.5% | 10,730    | 9.4%  | 1,475      | 12.1% | 14,045    | 8.3%  |
| Legal Services                                | 17         | 2.5%  | 53        | 1.0%  | 278        | 3.6%  | 1,896     | 1.7%  | 370        | 3.0%  | 2,366     | 1.4%  |



**Source:** This infographic contains data provided by Esri-Data Axle (2025), Esri (2025). Data note: Not all NAICS subcategories for a 2 digit major category are being shown.

# Business Summary Report (NAICS)

5005 W Overland Rd, Boise, Idaho, 83705 2  
 5005 W Overland Rd, Boise, Idaho, 83705  
 Rings: 1, 3, 5 mile radii



| by NAICS Codes                            | 1 mile     |               |              |               | 3 miles      |               |                |               | 5 miles       |               |                |               |
|---|------------|---------------|--------------|---------------|--------------|---------------|----------------|---------------|---------------|---------------|----------------|---------------|
|   | Businesses |               | Employees    |               | Businesses   |               | Employees      |               | Businesses    |               | Employees      |               |
|   | Number     | %             | Number       | %             | Number       | %             | Number         | %             | Number        | %             | Number         | %             |
| Management of Companies (55)              | 0          | 0.0%          | 0            | 0.0%          | 21           | 0.3%          | 162            | 0.1%          | 39            | 0.3%          | 241            | 0.1%          |
| Administrative, Support & Waste Mgmt (56) | 32         | 4.6%          | 192          | 3.5%          | 269          | 3.5%          | 2,936          | 2.6%          | 459           | 3.8%          | 4,261          | 2.5%          |
| Educational Services (61)                 | 13         | 1.9%          | 369          | 6.7%          | 145          | 1.9%          | 2,655          | 2.3%          | 256           | 2.1%          | 5,352          | 3.1%          |
| Health Care & Social Assistance (62)      | 86         | 12.5%         | 1,154        | 20.8%         | 901          | 11.8%         | 22,217         | 19.5%         | 1,428         | 11.7%         | 34,003         | 20.0%         |
| Ambulatory Health Care                    | 45         | 6.5%          | 479          | 8.7%          | 620          | 8.2%          | 11,760         | 10.3%         | 956           | 7.8%          | 16,613         | 9.8%          |
| Hospital                                  | 3          | 0.4%          | 90           | 1.6%          | 56           | 0.7%          | 7,356          | 6.5%          | 91            | 0.8%          | 11,841         | 7.0%          |
| Nursing/Residential Care                  | 8          | 1.2%          | 318          | 5.7%          | 27           | 0.3%          | 940            | 0.8%          | 60            | 0.5%          | 2,283          | 1.3%          |
| Social Assistance                         | 30         | 4.3%          | 268          | 4.8%          | 198          | 2.6%          | 2,160          | 1.9%          | 322           | 2.6%          | 3,266          | 1.9%          |
| Arts, Entertainment & Recreation (71)     | 15         | 2.2%          | 158          | 2.9%          | 151          | 2.0%          | 1,309          | 1.1%          | 237           | 1.9%          | 2,018          | 1.2%          |
| Accommodation & Food Services (72)        | 43         | 6.2%          | 537          | 9.7%          | 578          | 7.6%          | 15,432         | 13.6%         | 786           | 6.5%          | 18,723         | 11.0%         |
| Accommodation                             | 2          | 0.3%          | 11           | 0.2%          | 78           | 1.0%          | 1,650          | 1.4%          | 90            | 0.7%          | 2,140          | 1.3%          |
| Food & Drinking Places                    | 41         | 6.0%          | 525          | 9.5%          | 501          | 6.6%          | 13,782         | 12.1%         | 696           | 5.7%          | 16,583         | 9.8%          |
| Other Services Except Public Admin (81)   | 105        | 15.2%         | 454          | 8.2%          | 942          | 12.4%         | 5,220          | 4.6%          | 1,488         | 12.2%         | 7,729          | 4.5%          |
| Repair & Maintenance                      | 18         | 2.6%          | 73           | 1.3%          | 203          | 2.7%          | 1,100          | 1.0%          | 347           | 2.9%          | 1,818          | 1.1%          |
| Auto Repair & Maintenance                 | 9          | 1.3%          | 33           | 0.6%          | 149          | 2.0%          | 743            | 0.7%          | 255           | 2.1%          | 1,318          | 0.8%          |
| Personal & Laundry Service                | 38         | 5.5%          | 126          | 2.3%          | 322          | 4.2%          | 1,689          | 1.5%          | 482           | 4.0%          | 2,549          | 1.5%          |
| Civic and Other Orgs                      | 50         | 7.3%          | 254          | 4.6%          | 417          | 5.5%          | 2,431          | 2.1%          | 660           | 5.4%          | 3,363          | 2.0%          |
| Public Administration (92)                | 7          | 1.0%          | 143          | 2.6%          | 263          | 3.5%          | 14,450         | 12.7%         | 390           | 3.2%          | 20,318         | 11.9%         |
| Unclassified Establishments (99)          | 35         | 5.1%          | 0            | 0.0%          | 359          | 4.7%          | 58             | 0.1%          | 587           | 4.8%          | 99             | 0.1%          |
| <b>Total (11-99)</b>                      | <b>689</b> | <b>100.0%</b> | <b>5,539</b> | <b>100.0%</b> | <b>7,607</b> | <b>100.0%</b> | <b>113,672</b> | <b>100.0%</b> | <b>12,195</b> | <b>100.0%</b> | <b>170,135</b> | <b>100.0%</b> |



**Source:** This infographic contains data provided by Esri-Data Axle (2025), Esri (2025). Data note: Not all NAICS subcategories for a 2 digit major category are being shown.

# Business Summary Report (SIC)

5005 W Overland Rd, Boise, Idaho, 83705 2  
 5005 W Overland Rd, Boise, Idaho, 83705  
 Rings: 1, 3, 5 mile radii



| Data for all businesses in area     | 1 mile | 3 miles | 5 miles |
|-------------------------------------|--------|---------|---------|
| Total Businesses                    | 689    | 7,607   | 12,195  |
| Total Employees                     | 5,539  | 113,672 | 170,135 |
| Total Population                    | 13,898 | 87,939  | 221,334 |
| Employee/Population Ratio (per 100) | 39.9   | 129.3   | 76.9    |

| by SIC Codes                 | Businesses |       | Employees |       | Businesses |       | Employees |       | Businesses |       | Employees |       |
|------------------------------|------------|-------|-----------|-------|------------|-------|-----------|-------|------------|-------|-----------|-------|
|                              | Number     | %     | Number    | %     | Number     | %     | Number    | %     | Number     | %     | Number    | %     |
| Agriculture & Mining (01-14) | 17         | 2.5%  | 89        | 1.6%  | 127        | 1.7%  | 921       | 0.8%  | 256        | 2.1%  | 1,686     | 1.0%  |
| Construction (15-17)         | 41         | 6.0%  | 386       | 7.0%  | 408        | 5.4%  | 3,280     | 2.9%  | 814        | 6.7%  | 5,958     | 3.5%  |
| Manufacturing (20-39)        | 11         | 1.6%  | 136       | 2.5%  | 246        | 3.2%  | 6,037     | 5.3%  | 408        | 3.4%  | 10,156    | 6.0%  |
| Transportation (40-47)       | 15         | 2.2%  | 85        | 1.5%  | 181        | 2.4%  | 1,787     | 1.6%  | 280        | 2.3%  | 2,616     | 1.5%  |
| Communication (48)           | 7          | 1.0%  | 49        | 0.9%  | 76         | 1.0%  | 1,617     | 1.4%  | 99         | 0.8%  | 1,913     | 1.1%  |
| Utility (49)                 | 3          | 0.4%  | 18        | 0.3%  | 34         | 0.5%  | 1,841     | 1.6%  | 49         | 0.4%  | 2,047     | 1.2%  |
| Wholesale Trade (50-51)      | 23         | 3.3%  | 228       | 4.1%  | 234        | 3.1%  | 3,826     | 3.4%  | 411        | 3.4%  | 6,575     | 3.9%  |
| Retail Trade Summary (52-59) | 122        | 17.7% | 1,337     | 24.1% | 1,445      | 19.0% | 25,474    | 22.4% | 2,211      | 18.1% | 38,797    | 22.8% |
| Home Improvement             | 5          | 0.7%  | 50        | 0.9%  | 64         | 0.8%  | 906       | 0.8%  | 118        | 1.0%  | 1,724     | 1.0%  |
| General Merchandise Stores   | 3          | 0.4%  | 12        | 0.2%  | 47         | 0.6%  | 2,155     | 1.9%  | 68         | 0.6%  | 2,352     | 1.4%  |
| Food Stores                  | 15         | 2.2%  | 374       | 6.8%  | 146        | 1.9%  | 2,268     | 2.0%  | 235        | 1.9%  | 7,875     | 4.6%  |
| Auto Dealers & Gas Stations  | 17         | 2.5%  | 169       | 3.0%  | 151        | 2.0%  | 2,142     | 1.9%  | 270        | 2.2%  | 4,285     | 2.5%  |
| Apparel & Accessory Stores   | 5          | 0.7%  | 16        | 0.3%  | 107        | 1.4%  | 1,105     | 1.0%  | 131        | 1.1%  | 1,230     | 0.7%  |
| Furniture & Home Furnishings | 3          | 0.4%  | 43        | 0.8%  | 83         | 1.1%  | 857       | 0.8%  | 148        | 1.2%  | 1,431     | 0.8%  |
| Eating & Drinking Places     | 41         | 6.0%  | 525       | 9.5%  | 486        | 6.4%  | 13,628    | 12.0% | 676        | 5.5%  | 16,392    | 9.6%  |
| Miscellaneous Retail         | 33         | 4.8%  | 148       | 2.7%  | 361        | 4.8%  | 2,412     | 2.1%  | 564        | 4.6%  | 3,509     | 2.1%  |

**Source:** This infographic contains data provided by Esri-Data Axle (2025), Esri (2025).

# Business Summary Report (SIC)

5005 W Overland Rd, Boise, Idaho, 83705 2  
 5005 W Overland Rd, Boise, Idaho, 83705  
 Rings: 1, 3, 5 mile radii



| by SIC Codes                            | 1 mile     |        |           |        | 3 miles    |        |           |        | 5 miles    |        |           |        |
|---|------------|--------|-----------|--------|------------|--------|-----------|--------|------------|--------|-----------|--------|
|   | Businesses |        | Employees |        | Businesses |        | Employees |        | Businesses |        | Employees |        |
|   | Number     | %      | Number    | %      | Number     | %      | Number    | %      | Number     | %      | Number    | %      |
| Finance, Insurance, Real Estate (60-67) | 77         | 11.2%  | 370       | 6.7%   | 783        | 10.3%  | 7,343     | 6.5%   | 1,249      | 10.2%  | 9,923     | 5.8%   |
| Banks, Savings & Lending                | 10         | 1.4%   | 52        | 0.9%   | 137        | 1.8%   | 1,197     | 1.1%   | 226        | 1.9%   | 1,726     | 1.0%   |
| Securities Brokers                      | 10         | 1.4%   | 22        | 0.4%   | 134        | 1.8%   | 691       | 0.6%   | 204        | 1.7%   | 971       | 0.6%   |
| Insurance Carriers & Agents             | 24         | 3.5%   | 95        | 1.7%   | 118        | 1.6%   | 876       | 0.8%   | 184        | 1.5%   | 1,359     | 0.8%   |
| Real Estate, Investment Offices         | 34         | 4.9%   | 201       | 3.6%   | 394        | 5.2%   | 4,579     | 4.0%   | 635        | 5.2%   | 5,866     | 3.5%   |
| Services Summary (70-89)                | 330        | 47.9%  | 2,700     | 48.8%  | 3,451      | 45.4%  | 47,068    | 41.4%  | 5,444      | 44.6%  | 70,176    | 41.3%  |
| Hotels & Lodging                        | 2          | 0.3%   | 11        | 0.2%   | 78         | 1.0%   | 1,650     | 1.4%   | 90         | 0.7%   | 2,140     | 1.3%   |
| Automotive Services                     | 11         | 1.6%   | 49        | 0.9%   | 193        | 2.5%   | 1,157     | 1.0%   | 322        | 2.6%   | 1,919     | 1.1%   |
| Movies & Amusements                     | 19         | 2.8%   | 179       | 3.2%   | 167        | 2.2%   | 1,560     | 1.4%   | 278        | 2.3%   | 2,458     | 1.4%   |
| Health Services                         | 51         | 7.4%   | 796       | 14.4%  | 681        | 8.9%   | 19,655    | 17.3%  | 1,056      | 8.7%   | 29,713    | 17.5%  |
| Legal Services                          | 17         | 2.5%   | 52        | 0.9%   | 257        | 3.4%   | 1,575     | 1.4%   | 344        | 2.8%   | 2,017     | 1.2%   |
| Education Inst. & Libraries             | 12         | 1.7%   | 365       | 6.6%   | 115        | 1.5%   | 2,567     | 2.3%   | 205        | 1.7%   | 5,180     | 3.0%   |
| Other Services                          | 220        | 31.9%  | 1,247     | 22.5%  | 1,961      | 25.8%  | 18,903    | 16.6%  | 3,150      | 25.8%  | 26,749    | 15.7%  |
| Government (91-97)                      | 7          | 1.0%   | 141       | 2.5%   | 262        | 3.4%   | 14,421    | 12.7%  | 387        | 3.2%   | 20,190    | 11.9%  |
| Unclassified Establishments (99)        | 35         | 5.1%   | 0         | 0.0%   | 359        | 4.7%   | 58        | 0.1%   | 587        | 4.8%   | 99        | 0.1%   |
| Totals (01-99)                          | 689        | 100.0% | 5,539     | 100.0% | 7,607      | 100.0% | 113,672   | 100.0% | 12,195     | 100.0% | 170,135   | 100.0% |



**Source:** This infographic contains data provided by Esri-Data Axle (2025), Esri (2025).