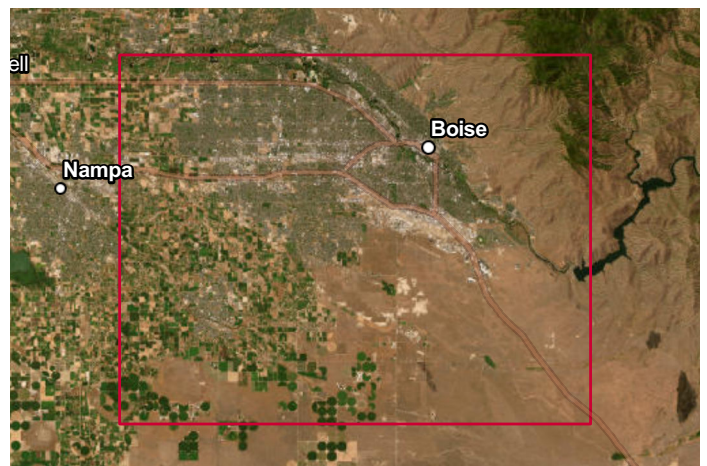
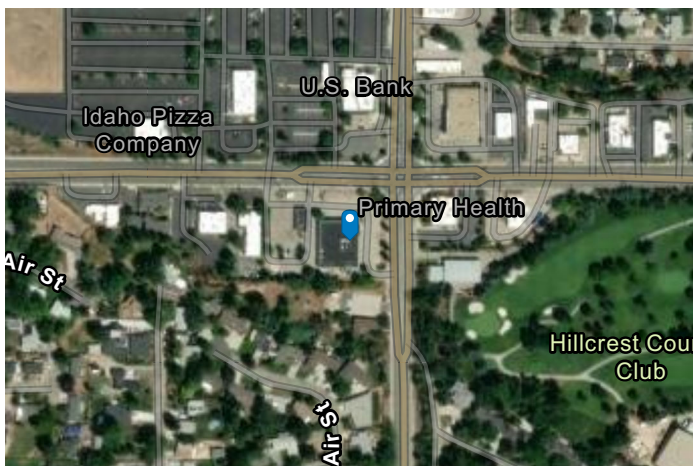
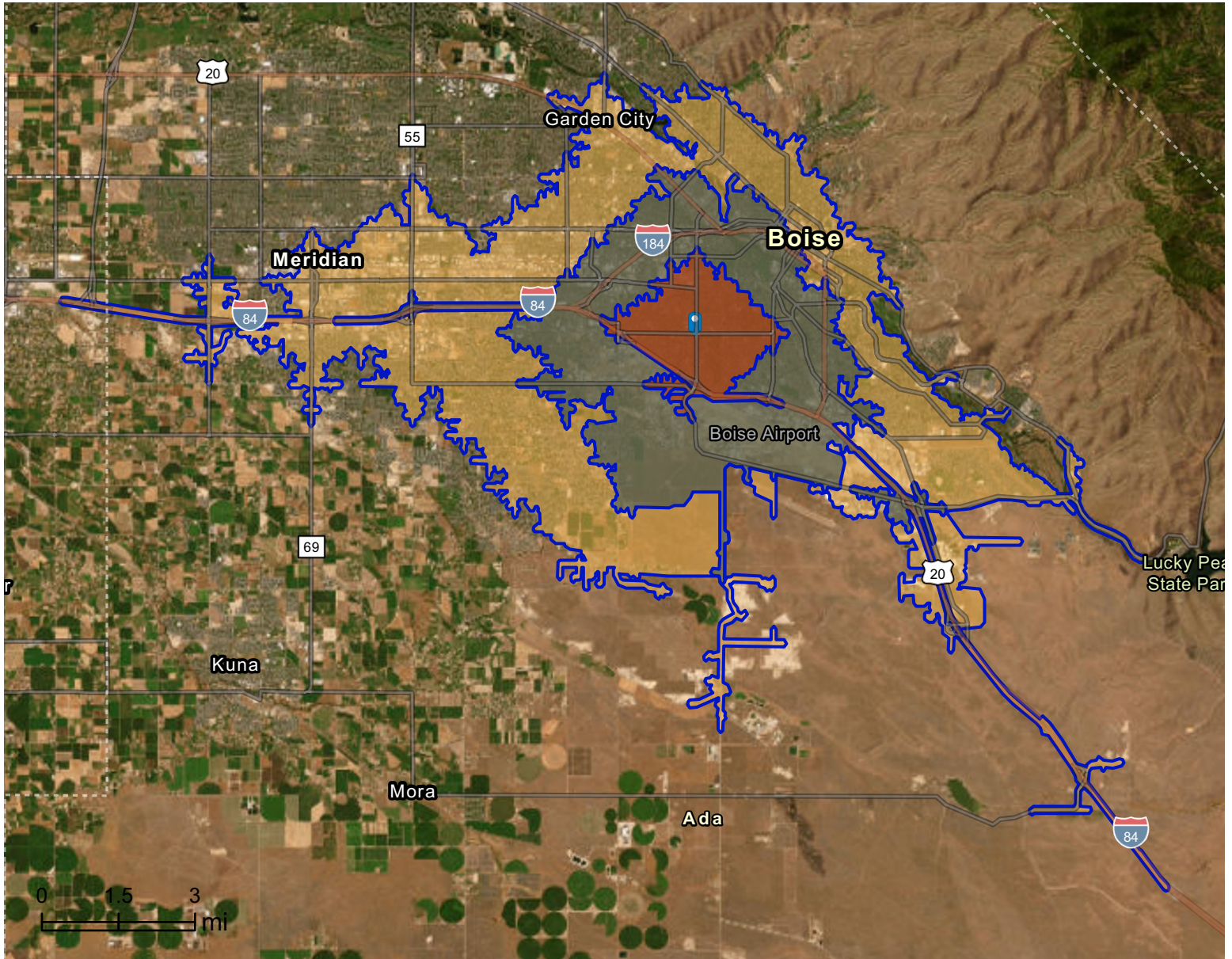


# Site Map

5005 W Overland Rd, Boise, Idaho, 83705 2  
5005 W Overland Rd, Boise, Idaho, 83705  
Drive time: 5, 10, 15 minute radii

Prepared by Esri  
Latitude: 43.58929  
Longitude: -116.24418



# Executive Summary

5005 W Overland Rd, Boise, Idaho, 83705 2

5005 W Overland Rd, Boise, Idaho, 83705

Drive time: 5, 10, 15 minute radii



Population	5 minutes	10 minutes	15 minutes
2010 Population	22,040	72,739	192,970
2020 Population	22,930	82,057	221,605
2025 Population	22,942	85,005	232,676
2030 Population	23,568	92,112	248,307
2010-2020 Annual Rate	0.40%	1.21%	1.39%
2020-2025 Annual Rate	0.01%	0.67%	0.93%
2025-2030 Annual Rate	0.54%	1.62%	1.31%

Age	5 minutes	10 minutes	15 minutes
2025 Median Age	37.3	35.0	36.9
U.S. median age is 39.1			

Race and Ethnicity	5 minutes	10 minutes	15 minutes
White Alone	77.6%	77.2%	78.5%
Black Alone	3.6%	3.1%	2.5%
American Indian Alone	0.9%	0.9%	0.7%
Asian Alone	2.8%	3.2%	3.9%
Pacific Islander Alone	0.4%	0.4%	0.3%
Some Other Race Alone	5.3%	5.6%	4.6%
Two or More Races	9.4%	9.6%	9.4%
Hispanic Origin	11.8%	12.4%	11.3%
Diversity Index	51.2	52.2	49.7

Households	5 minutes	10 minutes	15 minutes
2010 Total Households	9,691	31,579	80,342
2020 Total Households	10,034	35,001	91,755
2025 Total Households	10,320	37,117	99,019
2030 Total Households	10,759	40,835	107,663
2010-2020 Annual Rate	0.35%	1.03%	1.34%
2020-2025 Annual Rate	0.54%	1.12%	1.46%
2025-2030 Annual Rate	0.84%	1.93%	1.69%
2025 Average Household Size	2.19	2.18	2.29
Wealth Index	66	66	90

<b>Mortgage Income</b>	<b>5 minutes</b>	<b>10 minutes</b>	<b>15 minutes</b>
2025 Percent of Income for Mortgage	44.5%	44.5%	40.8%
<b>Median Household Income</b>			
2025 Median Household Income	\$68,135	\$70,263	\$83,578
2030 Median Household Income	\$76,964	\$80,720	\$95,624
2025-2030 Annual Rate	2.47%	2.81%	2.73%
<b>Average Household Income</b>			
2025 Average Household Income	\$93,415	\$92,724	\$112,965
2030 Average Household Income	\$103,854	\$106,061	\$125,897
<b>Per Capita Income</b>			
2025 Per Capita Income	\$42,096	\$40,798	\$47,854
2030 Per Capita Income	\$47,492	\$47,458	\$54,299
2025-2030 Annual Rate	2.44%	3.07%	2.56%
<b>Income Equality</b>			
2025 Gini Index	42.3	43.8	44.1
<b>Socioeconomic Status</b>			
2025 Socioeconomic Status Index	48.4	48.8	52.8
<b>Housing Unit Summary</b>			
Housing Affordability Index	56	56	61
2010 Total Housing Units	10,570	34,647	87,007
2010 Owner Occupied Hus (%)	54.4%	51.8%	59.4%
2010 Renter Occupied Hus (%)	45.6%	48.2%	40.6%
2010 Vacant Housing Units (%)	8.3%	8.9%	7.7%
2020 Housing Units	10,564	37,131	96,961
2020 Owner Occupied HUs (%)	55.1%	50.5%	58.2%
2020 Renter Occupied HUs (%)	44.9%	49.5%	41.8%
Vacant Housing Units	5.1%	5.6%	5.3%
2025 Housing Units	10,830	39,104	104,440
Owner Occupied Housing Units	58.0%	52.1%	59.3%
Renter Occupied Housing Units	42.0%	47.9%	40.8%
Vacant Housing Units	4.7%	5.1%	5.2%
2030 Total Housing Units	11,289	42,884	113,179
2030 Owner Occupied Housing Units	6,342	21,733	63,675
2030 Renter Occupied Housing Units	4,418	19,102	43,989
2030 Vacant Housing Units	530	2,049	5,516

# Business Summary Report (NAICS)

5005 W Overland Rd, Boise, Idaho, 83705 2  
 5005 W Overland Rd, Boise, Idaho, 83705  
 Drive time: 5, 10, 15 minute radii



Data for all businesses in area	5 minutes	10 minutes	15 minutes
Total Businesses	1,165	6,165	14,707
Total Employees	11,145	85,714	210,244
Total Population	22,942	85,005	232,676
Employee/Population Ratio (per 100)	48.6	100.8	90.4

by NAICS Codes	Businesses		Employees		Businesses		Employees		Businesses		Employees	
	Number	%	Number	%	Number	%	Number	%	Number	%	Number	%
Agriculture, Forestry, Fishing & Hunting (11)	9	0.8%	37	0.3%	27	0.4%	161	0.2%	65	0.4%	287	0.1%
Mining (21)	1	0.1%	4	0.0%	7	0.1%	53	0.1%	15	0.1%	101	0.1%
Utilities (22)	2	0.2%	7	0.1%	14	0.2%	942	1.1%	30	0.2%	1,723	0.8%
Construction (23)	76	6.5%	553	5.0%	434	7.0%	3,748	4.4%	1,100	7.5%	8,892	4.2%
Building Construction	21	1.8%	204	1.8%	146	2.4%	1,122	1.3%	382	2.6%	2,681	1.3%
Heavy/Civil Eng Construction	1	0.1%	13	0.1%	36	0.6%	559	0.7%	88	0.6%	1,283	0.6%
Specialty Trade Contractor	53	4.5%	337	3.0%	252	4.1%	2,067	2.4%	631	4.3%	4,927	2.3%
Manufacturing (31-33)	33	2.8%	325	2.9%	251	4.1%	5,296	6.2%	551	3.8%	18,344	8.7%
Wholesale Trade (42)	36	3.1%	383	3.4%	233	3.8%	3,341	3.9%	493	3.4%	8,452	4.0%
Durable Goods	26	2.2%	317	2.8%	182	3.0%	2,431	2.8%	390	2.6%	5,974	2.8%
Nondurable Goods	6	0.5%	46	0.4%	42	0.7%	842	1.0%	89	0.6%	2,026	1.0%
Trade Broker	4	0.3%	21	0.2%	8	0.1%	68	0.1%	15	0.1%	452	0.2%



**Source:** This infographic contains data provided by Esri-Data Axle (2025), Esri (2025). Data note: Not all NAICS subcategories for a 2 digit major category are being shown.

# Business Summary Report (NAICS)

5005 W Overland Rd, Boise, Idaho, 83705 2  
 5005 W Overland Rd, Boise, Idaho, 83705  
 Drive time: 5, 10, 15 minute radii



by NAICS Codes	5 minutes				10 minutes				15 minutes			
	Businesses		Employees		Businesses		Employees		Businesses		Employees	
	Number	%	Number	%	Number	%	Number	%	Number	%	Number	%
Retail Trade (44-45)	137	11.8%	1,414	12.7%	789	12.8%	9,831	11.5%	1,743	11.8%	26,914	12.8%
Motor Vehicle & Parts Dealers	21	1.8%	278	2.5%	120	1.9%	1,465	1.7%	246	1.7%	4,373	2.1%
Furniture & Home Furnishing Stores	4	0.3%	58	0.5%	38	0.6%	389	0.5%	94	0.6%	889	0.4%
Electronics & Appliance Stores	4	0.3%	12	0.1%	22	0.4%	273	0.3%	53	0.4%	599	0.3%
Building & Garden Equipment	11	0.9%	99	0.9%	63	1.0%	906	1.1%	143	1.0%	2,172	1.0%
Food & Beverage Stores	25	2.1%	643	5.8%	115	1.9%	1,938	2.3%	247	1.7%	8,856	4.2%
Health & Personal Care Stores	8	0.7%	64	0.6%	60	1.0%	411	0.5%	147	1.0%	1,119	0.5%
Gasoline Stations	7	0.6%	48	0.4%	32	0.5%	326	0.4%	63	0.4%	541	0.3%
Clothing, Shoe and Jewellery Stores	13	1.1%	37	0.3%	92	1.5%	902	1.1%	205	1.4%	2,059	1.0%
Sporting Goods, Hobby & Music Stores	30	2.6%	135	1.2%	158	2.6%	1,239	1.4%	343	2.3%	2,598	1.2%
General Merchandise Stores	13	1.1%	41	0.4%	89	1.4%	1,982	2.3%	202	1.4%	3,709	1.8%
Transportation & Warehousing (48-49)	17	1.5%	105	0.9%	153	2.5%	1,768	2.1%	262	1.8%	2,671	1.3%
Truck Transportation	10	0.9%	57	0.5%	52	0.8%	537	0.6%	89	0.6%	902	0.4%
Information (51)	21	1.8%	180	1.6%	132	2.1%	2,548	3.0%	305	2.1%	5,074	2.4%
Finance & Insurance (52)	70	6.0%	315	2.8%	293	4.8%	2,012	2.4%	821	5.6%	5,825	2.8%
Central Bank/Credit & Related Activities	16	1.4%	102	0.9%	99	1.6%	908	1.1%	305	2.1%	2,510	1.2%
Securities & Commodity Contracts	16	1.4%	43	0.4%	93	1.5%	388	0.5%	267	1.8%	1,285	0.6%
Funds, Trusts & Other Financial	38	3.3%	170	1.5%	101	1.6%	716	0.8%	249	1.7%	2,030	1.0%
Real Estate, Rental & Leasing (53)	53	4.5%	297	2.7%	334	5.4%	3,968	4.6%	793	5.4%	6,701	3.2%
Professional, Scientific & Tech Services (54)	131	11.2%	1,411	12.7%	653	10.6%	7,871	9.2%	1,679	11.4%	16,059	7.6%
Legal Services	26	2.2%	96	0.9%	142	2.3%	841	1.0%	406	2.8%	2,572	1.2%



**Source:** This infographic contains data provided by Esri-Data Axle (2025), Esri (2025). Data note: Not all NAICS subcategories for a 2 digit major category are being shown.

# Business Summary Report (NAICS)

5005 W Overland Rd, Boise, Idaho, 83705 2  
 5005 W Overland Rd, Boise, Idaho, 83705  
 Drive time: 5, 10, 15 minute radii



by NAICS Codes	5 minutes				10 minutes				15 minutes			
	Businesses		Employees		Businesses		Employees		Businesses		Employees	
	Number	%	Number	%	Number	%	Number	%	Number	%	Number	%
Management of Companies (55)	1	0.1%	4	0.0%	15	0.2%	123	0.1%	41	0.3%	246	0.1%
Administrative, Support & Waste Mgmt (56)	46	4.0%	284	2.5%	229	3.7%	2,537	3.0%	534	3.6%	4,740	2.3%
Educational Services (61)	21	1.8%	594	5.3%	113	1.8%	2,103	2.5%	309	2.1%	6,856	3.3%
Health Care & Social Assistance (62)	162	13.9%	2,757	24.7%	730	11.8%	12,923	15.1%	1,841	12.5%	39,931	19.0%
Amulatory Health Care	96	8.2%	1,748	15.7%	502	8.1%	8,694	10.1%	1,268	8.6%	21,250	10.1%
Hospital	9	0.8%	231	2.1%	43	0.7%	1,520	1.8%	110	0.8%	12,175	5.8%
Nursing/Residential Care	11	0.9%	354	3.2%	27	0.4%	990	1.2%	85	0.6%	2,750	1.3%
Social Assistance	46	4.0%	424	3.8%	159	2.6%	1,719	2.0%	377	2.6%	3,755	1.8%
Arts, Entertainment & Recreation (71)	22	1.9%	188	1.7%	129	2.1%	1,031	1.2%	276	1.9%	2,443	1.2%
Accommodation & Food Services (72)	74	6.3%	981	8.8%	459	7.5%	12,904	15.1%	1,029	7.0%	22,397	10.7%
Accommodation	6	0.5%	47	0.4%	69	1.1%	1,209	1.4%	113	0.8%	2,309	1.1%
Food & Drinking Places	68	5.8%	934	8.4%	390	6.3%	11,695	13.6%	915	6.2%	20,088	9.6%
Other Services Except Public Admin (81)	182	15.6%	840	7.5%	793	12.9%	4,280	5.0%	1,728	11.8%	9,201	4.4%
Repair & Maintenance	29	2.5%	124	1.1%	206	3.3%	1,123	1.3%	393	2.7%	2,121	1.0%
Auto Repair & Maintenance	17	1.5%	67	0.6%	152	2.5%	740	0.9%	290	2.0%	1,448	0.7%
Personal & Laundry Service	69	5.9%	266	2.4%	264	4.3%	1,269	1.5%	593	4.0%	3,283	1.6%
Civic and Other Orgs	84	7.2%	450	4.0%	323	5.2%	1,888	2.2%	742	5.0%	3,796	1.8%
Public Administration (92)	16	1.4%	466	4.2%	121	2.0%	8,243	9.6%	410	2.8%	23,263	11.1%
Unclassified Establishments (99)	55	4.7%	1	0.0%	258	4.2%	32	0.0%	682	4.6%	123	0.1%
<b>Total (11-99)</b>	<b>1,165</b>	<b>100.0%</b>	<b>11,145</b>	<b>100.0%</b>	<b>6,165</b>	<b>100.0%</b>	<b>85,714</b>	<b>100.0%</b>	<b>14,707</b>	<b>100.0%</b>	<b>210,244</b>	<b>100.0%</b>



**Source:** This infographic contains data provided by Esri-Data Axle (2025), Esri (2025). Data note: Not all NAICS subcategories for a 2 digit major category are being shown.

# Business Summary Report (SIC)

5005 W Overland Rd, Boise, Idaho, 83705 2  
 5005 W Overland Rd, Boise, Idaho, 83705  
 Drive time: 5, 10, 15 minute radii



Data for all businesses in area	5 minutes	10 minutes	15 minutes
Total Businesses	1,165	6,165	14,707
Total Employees	11,145	85,714	210,244
Total Population	22,942	85,005	232,676
Employee/Population Ratio (per 100)	48.6	100.8	90.4

by SIC Codes	Businesses		Employees		Businesses		Employees		Businesses		Employees	
	Number	%	Number	%	Number	%	Number	%	Number	%	Number	%
Agriculture & Mining (01-14)	29	2.5%	135	1.2%	122	2.0%	929	1.1%	290	2.0%	1,925	0.9%
Construction (15-17)	70	6.0%	541	4.8%	397	6.4%	3,518	4.1%	1,003	6.8%	8,149	3.9%
Manufacturing (20-39)	28	2.4%	320	2.9%	237	3.8%	5,746	6.7%	502	3.4%	18,660	8.9%
Transportation (40-47)	21	1.8%	133	1.2%	183	3.0%	1,963	2.3%	326	2.2%	3,592	1.7%
Communication (48)	8	0.7%	84	0.8%	59	1.0%	1,101	1.3%	112	0.8%	2,010	1.0%
Utility (49)	4	0.3%	24	0.2%	26	0.4%	1,054	1.2%	57	0.4%	2,122	1.0%
Wholesale Trade (50-51)	36	3.1%	383	3.4%	235	3.8%	3,354	3.9%	498	3.4%	8,475	4.0%
Retail Trade Summary (52-59)	211	18.1%	2,367	21.2%	1,208	19.6%	21,671	25.3%	2,729	18.6%	47,428	22.6%
Home Improvement	11	0.9%	99	0.9%	63	1.0%	903	1.1%	144	1.0%	2,173	1.0%
General Merchandise Stores	5	0.4%	21	0.2%	38	0.6%	1,809	2.1%	84	0.6%	2,999	1.4%
Food Stores	27	2.3%	649	5.8%	132	2.1%	2,114	2.5%	292	2.0%	9,286	4.4%
Auto Dealers & Gas Stations	27	2.3%	321	2.9%	149	2.4%	1,774	2.1%	305	2.1%	4,892	2.3%
Apparel & Accessory Stores	10	0.9%	28	0.3%	75	1.2%	808	0.9%	166	1.1%	1,838	0.9%
Furniture & Home Furnishings	8	0.7%	70	0.6%	71	1.1%	738	0.9%	178	1.2%	1,711	0.8%
Eating & Drinking Places	68	5.8%	933	8.4%	377	6.1%	11,570	13.5%	886	6.0%	19,782	9.4%
Miscellaneous Retail	55	4.7%	247	2.2%	302	4.9%	1,954	2.3%	674	4.6%	4,748	2.3%

**Source:** This infographic contains data provided by Esri-Data Axle (2025), Esri (2025).

# Business Summary Report (SIC)

5005 W Overland Rd, Boise, Idaho, 83705 2  
 5005 W Overland Rd, Boise, Idaho, 83705  
 Drive time: 5, 10, 15 minute radii



by SIC Codes	5 minutes				10 minutes				15 minutes			
	Businesses		Employees		Businesses		Employees		Businesses		Employees	
	Number	%	Number	%	Number	%	Number	%	Number	%	Number	%
Finance, Insurance, Real Estate (60-67)	120	10.3%	587	5.3%	600	9.7%	5,829	6.8%	1,603	10.9%	12,616	6.0%
Banks, Savings & Lending	20	1.7%	111	1.0%	105	1.7%	962	1.1%	318	2.2%	2,622	1.3%
Securities Brokers	15	1.3%	33	0.3%	89	1.4%	361	0.4%	247	1.7%	1,126	0.5%
Insurance Carriers & Agents	38	3.3%	170	1.5%	101	1.6%	716	0.8%	249	1.7%	2,030	1.0%
Real Estate, Investment Offices	47	4.0%	273	2.5%	305	5.0%	3,790	4.4%	789	5.4%	6,837	3.3%
Services Summary (70-89)	569	48.8%	6,115	54.9%	2,721	44.1%	32,298	37.7%	6,498	44.2%	81,997	39.0%
Hotels & Lodging	6	0.5%	47	0.4%	69	1.1%	1,209	1.4%	113	0.8%	2,309	1.1%
Automotive Services	20	1.7%	88	0.8%	195	3.2%	1,118	1.3%	366	2.5%	2,082	1.0%
Movies & Amusements	25	2.1%	207	1.9%	145	2.4%	1,310	1.5%	326	2.2%	3,039	1.4%
Health Services	109	9.4%	2,205	19.8%	552	8.9%	10,758	12.6%	1,404	9.6%	34,565	16.4%
Legal Services	25	2.1%	94	0.8%	130	2.1%	626	0.7%	373	2.5%	2,153	1.0%
Education Inst. & Libraries	19	1.6%	589	5.3%	84	1.4%	1,975	2.3%	247	1.7%	6,546	3.1%
Other Services	364	31.2%	2,884	25.9%	1,546	25.1%	15,301	17.9%	3,668	24.9%	31,304	14.9%
Government (91-97)	16	1.4%	456	4.1%	121	2.0%	8,220	9.6%	407	2.8%	23,147	11.0%
Unclassified Establishments (99)	55	4.7%	1	0.0%	258	4.2%	32	0.0%	682	4.6%	123	0.1%
Totals (01-99)	1,165	100.0%	11,145	100.0%	6,165	100.0%	85,714	100.0%	14,707	100.0%	210,244	100.0%



**Source:** This infographic contains data provided by Esri-Data Axle (2025), Esri (2025).