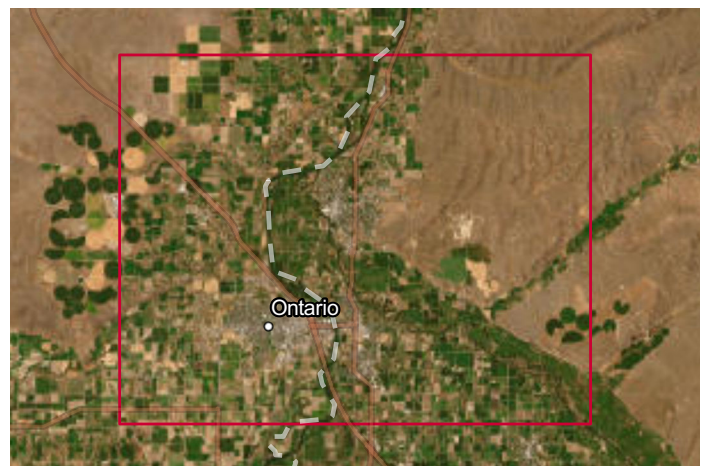
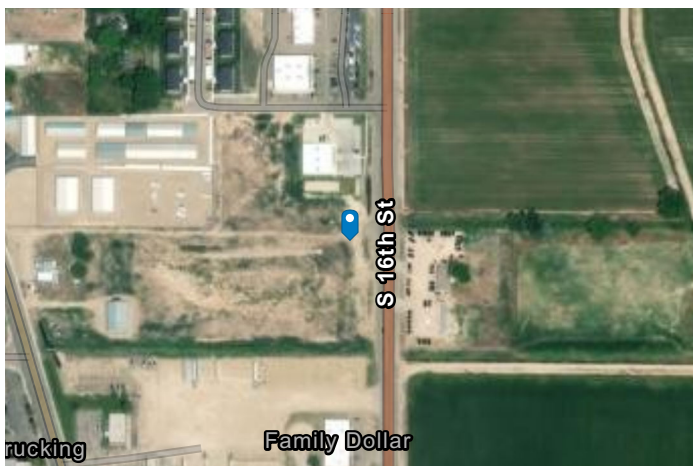
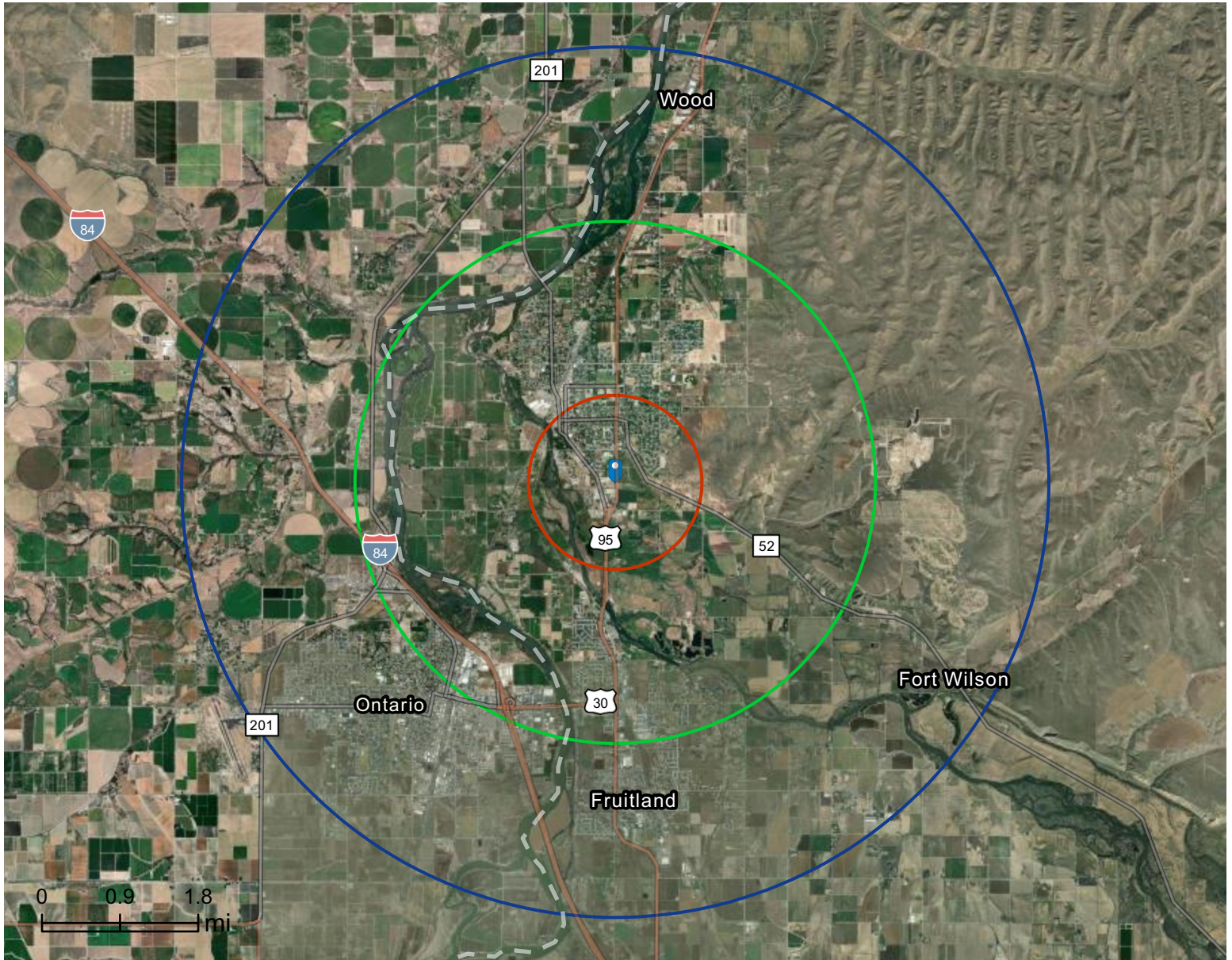


Site Map

McDonald's

Rings: 1, 3, 5 mile radii

Prepared by Esri
Latitude: 44.06218
Longitude: -116.92355



Executive Summary

McDonald's



Rings: 1, 3, 5 mile radii

Population	1 mile	3 miles	5 miles
2010 Population	3,532	13,607	29,199
2020 Population	3,737	14,913	31,516
2025 Population	4,079	16,472	34,011
2030 Population	4,323	17,515	35,616
2010-2020 Annual Rate	0.57%	0.92%	0.77%
2020-2025 Annual Rate	1.68%	1.91%	1.46%
2025-2030 Annual Rate	1.17%	1.24%	0.93%


Age	1 mile	3 miles	5 miles
2025 Median Age	39.3	38.6	38.2
U.S. median age is 39.1			

Race and Ethnicity	1 mile	3 miles	5 miles
White Alone	77.6%	73.6%	69.4%
Black Alone	0.5%	0.5%	0.7%
American Indian Alone	1.1%	1.7%	1.9%
Asian Alone	0.8%	1.0%	1.3%
Pacific Islander Alone	0.4%	0.2%	0.2%
Some Other Race Alone	7.2%	10.7%	14.1%
Two or More Races	12.4%	12.3%	12.5%
Hispanic Origin	19.7%	25.9%	30.6%
Diversity Index	57.4	64.9	70.3

Households	1 mile	3 miles	5 miles
2010 Total Households	1,334	5,079	10,908
2020 Total Households	1,438	5,660	11,778
2025 Total Households	1,583	6,240	12,656
2030 Total Households	1,682	6,637	13,219
2010-2020 Annual Rate	0.75%	1.09%	0.77%
2020-2025 Annual Rate	1.85%	1.88%	1.38%
2025-2030 Annual Rate	1.22%	1.24%	0.87%
2025 Average Household Size	2.53	2.62	2.66
Wealth Index	45	59	58

Source: Esri forecasts for 2025 and 2030. U.S. Census 2010 and 2020 Census data converted by Esri into 2020 geography.

Mortgage Income	1 mile	3 miles	5 miles
2025 Percent of Income for Mortgage	33.7%	27.3%	29.3%
Median Household Income			
2025 Median Household Income	\$50,103	\$61,664	\$61,117
2030 Median Household Income	\$54,033	\$65,699	\$65,493
2025-2030 Annual Rate	1.52%	1.28%	1.39%
Average Household Income			
2025 Average Household Income	\$63,393	\$74,552	\$74,849
2030 Average Household Income	\$67,705	\$81,152	\$81,386
Per Capita Income			
2025 Per Capita Income	\$25,092	\$27,980	\$27,787
2030 Per Capita Income	\$26,850	\$30,466	\$30,142
2025-2030 Annual Rate	1.36%	1.72%	1.64%
Income Equality			
2025 Gini Index	37.0	41.1	43.7
Socioeconomic Status			
2025 Socioeconomic Status Index	46.8	41.1	41.8
Housing Unit Summary			
Housing Affordability Index	75	92	84
2010 Total Housing Units	1,473	5,584	11,853
2010 Owner Occupied Hus (%)	62.7%	64.0%	63.7%
2010 Renter Occupied Hus (%)	37.3%	36.0%	36.3%
2010 Vacant Housing Units (%)	9.4%	9.0%	8.0%
2020 Housing Units	1,505	5,981	12,462
2020 Owner Occupied HUs (%)	63.7%	66.1%	64.1%
2020 Renter Occupied HUs (%)	36.3%	33.9%	35.9%
Vacant Housing Units	3.6%	5.1%	5.6%
2025 Housing Units	1,638	6,571	13,343
Owner Occupied Housing Units	64.9%	67.5%	65.6%
Renter Occupied Housing Units	35.1%	32.5%	34.4%
Vacant Housing Units	3.4%	5.0%	5.2%
2030 Total Housing Units	1,739	6,961	13,893
2030 Owner Occupied Housing Units	1,122	4,592	8,860
2030 Renter Occupied Housing Units	560	2,046	4,359
2030 Vacant Housing Units	57	324	674

 **Source:** Esri forecasts for 2025 and 2030. U.S. Census 2010 and 2020 Census data converted by Esri into 2020 geography.

Business Summary Report (NAICS)

McDonald's



Rings: 1, 3, 5 mile radii

Data for all businesses in area	1 mile	3 miles	5 miles
Total Businesses	147	648	1,415
Total Employees	1,062	5,723	13,684
Total Population	4,079	16,472	34,011
Employee/Population Ratio (per 100)	26.0	34.7	40.2

by NAICS Codes	Businesses		Employees		Businesses		Employees		Businesses		Employees	
	Number	%	Number	%	Number	%	Number	%	Number	%	Number	%
Agriculture, Forestry, Fishing & Hunting (11)	1	0.7%	1	0.1%	4	0.6%	10	0.2%	9	0.6%	30	0.2%
Mining (21)	0	0.0%	1	0.1%	1	0.1%	4	0.1%	2	0.1%	5	0.0%
Utilities (22)	2	1.4%	25	2.4%	5	0.8%	44	0.8%	6	0.4%	49	0.4%
Construction (23)	14	9.5%	42	4.0%	47	7.3%	164	2.9%	76	5.4%	282	2.1%
Building Construction	4	2.7%	8	0.8%	14	2.2%	38	0.7%	22	1.6%	61	0.5%
Heavy/Civil Eng Construction	1	0.7%	5	0.5%	2	0.3%	9	0.2%	4	0.3%	36	0.3%
Specialty Trade Contractor	10	6.8%	29	2.7%	31	4.8%	118	2.1%	50	3.5%	185	1.4%
Manufacturing (31-33)	5	3.4%	73	6.9%	21	3.2%	912	15.9%	48	3.4%	1,587	11.6%
Wholesale Trade (42)	2	1.4%	7	0.7%	15	2.3%	223	3.9%	46	3.3%	767	5.6%
Durable Goods	1	0.7%	5	0.5%	10	1.5%	131	2.3%	23	1.6%	354	2.6%
Nondurable Goods	0	0.0%	0	0.0%	4	0.6%	89	1.6%	20	1.4%	408	3.0%
Trade Broker	1	0.7%	2	0.2%	1	0.1%	3	0.1%	2	0.1%	5	0.0%



Source: This infographic contains data provided by Esri-Data Axle (2025), Esri (2025). Data note: Not all NAICS subcategories for a 2 digit major category are being shown.

Business Summary Report (NAICS)

McDonald's



Rings: 1, 3, 5 mile radii

by NAICS Codes	1 mile				3 miles				5 miles			
	Businesses		Employees		Businesses		Employees		Businesses		Employees	
	Number	%	Number	%	Number	%	Number	%	Number	%	Number	%
Retail Trade (44-45)	25	17.0%	195	18.4%	94	14.5%	1,050	18.4%	202	14.3%	2,232	16.3%
Motor Vehicle & Parts Dealers	5	3.4%	19	1.8%	14	2.2%	155	2.7%	29	2.0%	312	2.3%
Furniture & Home Furnishing Stores	0	0.0%	0	0.0%	0	0.0%	0	0.0%	5	0.3%	22	0.2%
Electronics & Appliance Stores	1	0.7%	3	0.3%	1	0.1%	3	0.1%	4	0.3%	13	0.1%
Building & Garden Equipment	0	0.0%	1	0.1%	9	1.4%	54	0.9%	20	1.4%	143	1.1%
Food & Beverage Stores	7	4.8%	114	10.7%	17	2.6%	476	8.3%	35	2.5%	1,010	7.4%
Health & Personal Care Stores	3	2.0%	19	1.8%	10	1.5%	73	1.3%	18	1.3%	126	0.9%
Gasoline Stations	2	1.4%	12	1.1%	8	1.2%	89	1.6%	17	1.2%	191	1.4%
Clothing, Shoe and Jewellery Stores	0	0.0%	0	0.0%	4	0.6%	31	0.5%	10	0.7%	54	0.4%
Sporting Goods, Hobby & Music Stores	4	2.7%	9	0.8%	21	3.2%	99	1.7%	42	3.0%	187	1.4%
General Merchandise Stores	3	2.0%	18	1.7%	8	1.2%	68	1.2%	21	1.5%	175	1.3%
Transportation & Warehousing (48-49)	2	1.4%	9	0.8%	18	2.8%	193	3.4%	37	2.6%	359	2.6%
Truck Transportation	0	0.0%	0	0.0%	6	0.9%	15	0.3%	10	0.7%	35	0.3%
Information (51)	2	1.4%	5	0.5%	13	2.0%	75	1.3%	27	1.9%	271	2.0%
Finance & Insurance (52)	5	3.4%	24	2.3%	34	5.3%	152	2.7%	75	5.3%	384	2.8%
Central Bank/Credit & Related Activities	4	2.7%	19	1.8%	22	3.4%	113	2.0%	39	2.8%	232	1.7%
Securities & Commodity Contracts	0	0.0%	0	0.0%	2	0.3%	4	0.1%	9	0.6%	23	0.2%
Funds, Trusts & Other Financial	1	0.7%	5	0.5%	10	1.5%	35	0.6%	28	2.0%	129	0.9%
Real Estate, Rental & Leasing (53)	9	6.1%	40	3.8%	44	6.8%	159	2.8%	83	5.9%	290	2.1%
Professional, Scientific & Tech Services (54)	5	3.4%	33	3.1%	33	5.1%	186	3.3%	77	5.4%	445	3.3%
Legal Services	2	1.4%	12	1.1%	8	1.2%	49	0.9%	22	1.6%	109	0.8%



Source: This infographic contains data provided by Esri-Data Axle (2025), Esri (2025). Data note: Not all NAICS subcategories for a 2 digit major category are being shown.

Business Summary Report (NAICS)

McDonald's



Rings: 1, 3, 5 mile radii

by NAICS Codes	1 mile				3 miles				5 miles			
	Businesses		Employees		Businesses		Employees		Businesses		Employees	
	Number	%	Number	%	Number	%	Number	%	Number	%	Number	%
Management of Companies (55)	0	0.0%	0	0.0%	0	0.0%	0	0.0%	1	0.1%	3	0.0%
Administrative, Support & Waste Mgmt (56)	3	2.0%	38	3.6%	11	1.7%	67	1.2%	32	2.3%	157	1.1%
Educational Services (61)	5	3.4%	124	11.7%	19	2.9%	422	7.4%	41	2.9%	1,216	8.9%
Health Care & Social Assistance (62)	17	11.6%	191	18.0%	68	10.5%	608	10.6%	184	13.0%	2,380	17.4%
Ambulatory Health Care	7	4.8%	49	4.6%	40	6.2%	249	4.3%	111	7.8%	839	6.1%
Hospital	2	1.4%	24	2.3%	3	0.5%	48	0.8%	10	0.7%	641	4.7%
Nursing/Residential Care	3	2.0%	89	8.4%	9	1.4%	147	2.6%	28	2.0%	481	3.5%
Social Assistance	5	3.4%	29	2.7%	16	2.5%	164	2.9%	35	2.5%	419	3.1%
Arts, Entertainment & Recreation (71)	3	2.0%	11	1.0%	14	2.2%	53	0.9%	26	1.8%	111	0.8%
Accommodation & Food Services (72)	10	6.8%	109	10.3%	50	7.7%	615	10.8%	105	7.4%	1,260	9.2%
Accommodation	1	0.7%	1	0.1%	10	1.5%	120	2.1%	21	1.5%	241	1.8%
Food & Drinking Places	9	6.1%	109	10.3%	41	6.3%	495	8.7%	84	5.9%	1,020	7.5%
Other Services Except Public Admin (81)	24	16.3%	65	6.1%	94	14.5%	332	5.8%	207	14.6%	802	5.9%
Repair & Maintenance	8	5.4%	24	2.3%	30	4.6%	130	2.3%	59	4.2%	268	2.0%
Auto Repair & Maintenance	6	4.1%	19	1.8%	23	3.5%	101	1.8%	45	3.2%	195	1.4%
Personal & Laundry Service	7	4.8%	23	2.2%	28	4.3%	95	1.7%	59	4.2%	214	1.6%
Civic and Other Orgs	9	6.1%	18	1.7%	36	5.6%	108	1.9%	88	6.2%	320	2.3%
Public Administration (92)	8	5.4%	67	6.3%	40	6.2%	444	7.8%	80	5.7%	1,033	7.5%
Unclassified Establishments (99)	4	2.7%	3	0.3%	21	3.2%	11	0.2%	51	3.6%	20	0.1%
Total (11-99)	147	100.0%	1,062	100.0%	648	100.0%	5,723	100.0%	1,415	100.0%	13,684	100.0%



Source: This infographic contains data provided by Esri-Data Axle (2025), Esri (2025). Data note: Not all NAICS subcategories for a 2 digit major category are being shown.

Business Summary Report (SIC)

McDonald's



Rings: 1, 3, 5 mile radii

Data for all businesses in area	1 mile	3 miles	5 miles
Total Businesses	147	648	1,415
Total Employees	1,062	5,723	13,684
Total Population	4,079	16,472	34,011
Employee/Population Ratio (per 100)	26.0	34.7	40.2

by SIC Codes	Businesses		Employees		Businesses		Employees		Businesses		Employees	
	Number	%	Number	%	Number	%	Number	%	Number	%	Number	%
Agriculture & Mining (01-14)	3	2.0%	19	1.8%	10	1.5%	47	0.8%	25	1.8%	106	0.8%
Construction (15-17)	14	9.5%	42	4.0%	47	7.3%	164	2.9%	75	5.3%	276	2.0%
Manufacturing (20-39)	4	2.7%	63	5.9%	19	2.9%	892	15.6%	40	2.8%	1,615	11.8%
Transportation (40-47)	5	3.4%	24	2.3%	27	4.2%	225	3.9%	53	3.8%	441	3.2%
Communication (48)	1	0.7%	2	0.2%	8	1.2%	51	0.9%	15	1.1%	137	1.0%
Utility (49)	3	2.0%	33	3.1%	8	1.2%	61	1.1%	10	0.7%	72	0.5%
Wholesale Trade (50-51)	2	1.4%	7	0.7%	15	2.3%	223	3.9%	46	3.3%	767	5.6%
Retail Trade Summary (52-59)	35	23.8%	314	29.6%	137	21.1%	1,564	27.3%	295	20.9%	3,295	24.1%
Home Improvement	0	0.0%	1	0.1%	9	1.4%	54	0.9%	20	1.4%	143	1.1%
General Merchandise Stores	2	1.4%	16	1.5%	5	0.8%	58	1.0%	13	0.9%	143	1.1%
Food Stores	8	5.4%	124	11.7%	20	3.1%	495	8.7%	41	2.9%	1,049	7.7%
Auto Dealers & Gas Stations	7	4.8%	31	2.9%	22	3.4%	242	4.2%	42	3.0%	477	3.5%
Apparel & Accessory Stores	0	0.0%	0	0.0%	3	0.5%	27	0.5%	7	0.5%	43	0.3%
Furniture & Home Furnishings	1	0.7%	3	0.3%	1	0.1%	3	0.1%	11	0.8%	41	0.3%
Eating & Drinking Places	9	6.1%	109	10.3%	40	6.2%	493	8.6%	84	5.9%	1,018	7.4%
Miscellaneous Retail	8	5.4%	30	2.8%	37	5.7%	191	3.3%	77	5.4%	382	2.8%

Source: This infographic contains data provided by Esri-Data Axle (2025), Esri (2025).

Business Summary Report (SIC)

McDonald's



Rings: 1, 3, 5 mile radii

by SIC Codes	1 mile				3 miles				5 miles			
	Businesses		Employees		Businesses		Employees		Businesses		Employees	
	Number	%	Number	%	Number	%	Number	%	Number	%	Number	%
Finance, Insurance, Real Estate (60-67)	16	10.9%	78	7.3%	75	11.6%	333	5.8%	144	10.2%	674	4.9%
Banks, Savings & Lending	5	3.4%	20	1.9%	24	3.7%	118	2.1%	41	2.9%	236	1.7%
Securities Brokers	0	0.0%	0	0.0%	2	0.3%	4	0.1%	9	0.6%	23	0.2%
Insurance Carriers & Agents	1	0.7%	5	0.5%	10	1.5%	35	0.6%	28	2.0%	129	0.9%
Real Estate, Investment Offices	9	6.1%	52	4.9%	38	5.9%	177	3.1%	67	4.7%	286	2.1%
Services Summary (70-89)	53	36.0%	410	38.6%	242	37.4%	1,708	29.8%	580	41.0%	5,248	38.4%
Hotels & Lodging	1	0.7%	1	0.1%	10	1.5%	120	2.1%	21	1.5%	241	1.8%
Automotive Services	7	4.8%	19	1.8%	27	4.2%	107	1.9%	55	3.9%	222	1.6%
Movies & Amusements	3	2.0%	11	1.0%	15	2.3%	58	1.0%	26	1.8%	118	0.9%
Health Services	11	7.5%	159	15.0%	45	6.9%	402	7.0%	130	9.2%	1,757	12.8%
Legal Services	0	0.0%	1	0.1%	4	0.6%	10	0.2%	16	1.1%	63	0.5%
Education Inst. & Libraries	4	2.7%	83	7.8%	15	2.3%	370	6.5%	35	2.5%	1,168	8.5%
Other Services	27	18.4%	137	12.9%	126	19.4%	639	11.2%	298	21.1%	1,680	12.3%
Government (91-97)	8	5.4%	67	6.3%	40	6.2%	444	7.8%	80	5.7%	1,033	7.5%
Unclassified Establishments (99)	4	2.7%	3	0.3%	21	3.2%	11	0.2%	51	3.6%	20	0.1%
Totals (01-99)	147	100.0%	1,062	100.0%	648	100.0%	5,723	100.0%	1,415	100.0%	13,684	100.0%



Source: This infographic contains data provided by Esri-Data Axle (2025), Esri (2025).