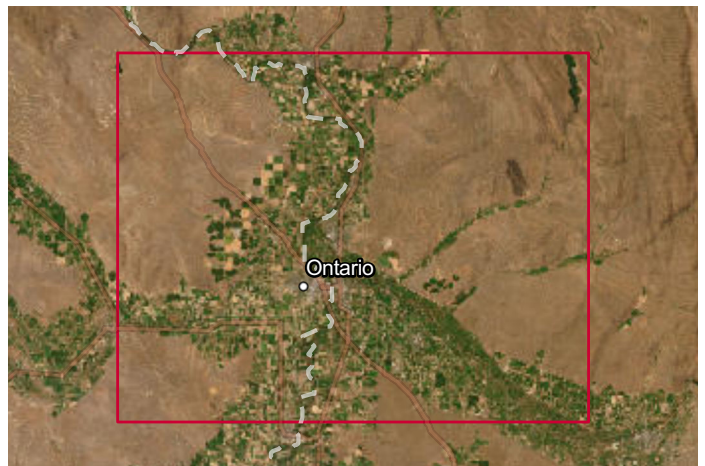
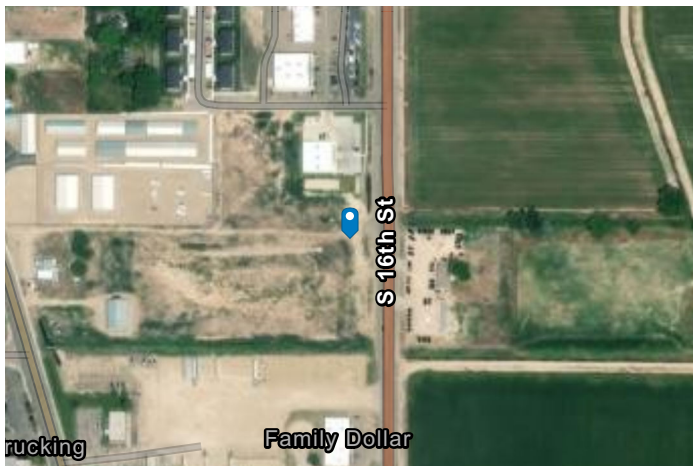
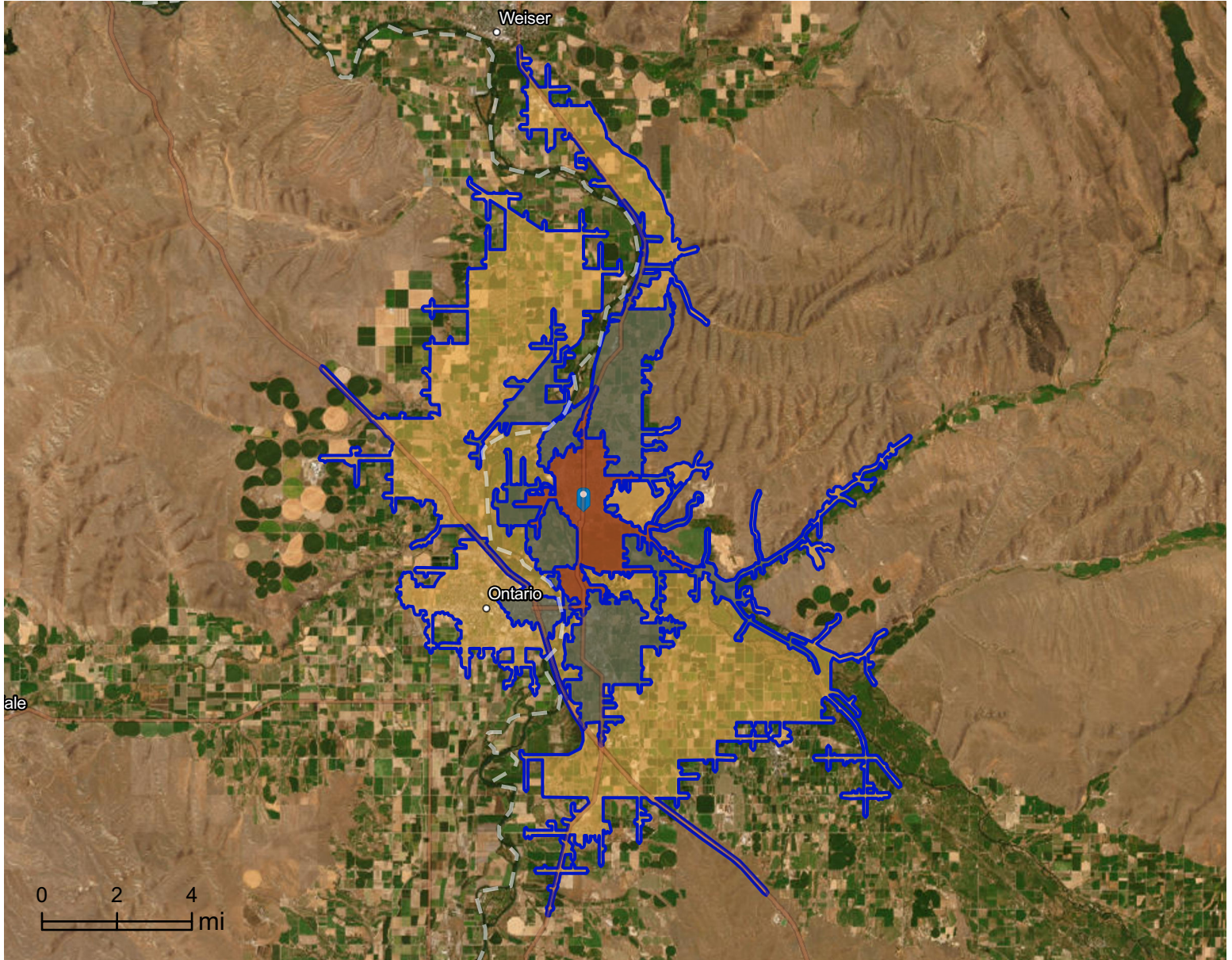


# Site Map

McDonald's

Drive time: 5, 10, 15 minute radii

Prepared by Esri  
Latitude: 44.06218  
Longitude: -116.92355



# Executive Summary

McDonald's



Drive time: 5, 10, 15 minute radii

Population	5 minutes	10 minutes	15 minutes
2010 Population	6,973	16,541	31,418
2020 Population	7,893	18,397	33,862
2025 Population	8,843	20,475	36,452
2030 Population	9,424	21,861	38,234
2010-2020 Annual Rate	1.25%	1.07%	0.75%
2020-2025 Annual Rate	2.19%	2.06%	1.41%
2025-2030 Annual Rate	1.28%	1.32%	0.96%

Age	5 minutes	10 minutes	15 minutes
2025 Median Age	39.1	38.8	38.5
U.S. median age is 39.1			

Race and Ethnicity	5 minutes	10 minutes	15 minutes
White Alone	76.7%	73.3%	70.2%
Black Alone	0.4%	0.6%	0.7%
American Indian Alone	1.5%	1.7%	1.8%
Asian Alone	1.0%	1.1%	1.3%
Pacific Islander Alone	0.2%	0.2%	0.2%
Some Other Race Alone	7.8%	11.0%	13.6%
Two or More Races	12.4%	12.2%	12.3%
Hispanic Origin	21.3%	25.4%	29.5%
Diversity Index	59.4	65.0	69.2

Households	5 minutes	10 minutes	15 minutes
2010 Total Households	2,648	6,028	11,643
2020 Total Households	3,015	6,757	12,546
2025 Total Households	3,377	7,530	13,487
2030 Total Households	3,605	8,041	14,115
2010-2020 Annual Rate	1.31%	1.15%	0.75%
2020-2025 Annual Rate	2.18%	2.08%	1.39%
2025-2030 Annual Rate	1.32%	1.32%	0.91%
2025 Average Household Size	2.59	2.70	2.68
Wealth Index	58	63	60

**Source:** Esri forecasts for 2025 and 2030. U.S. Census 2010 and 2020 Census data converted by Esri into 2020 geography.

<b>Mortgage Income</b>	<b>5 minutes</b>	<b>10 minutes</b>	<b>15 minutes</b>
2025 Percent of Income for Mortgage	29.5%	29.0%	29.8%
<b>Median Household Income</b>			
2025 Median Household Income	\$59,092	\$63,350	\$61,659
2030 Median Household Income	\$63,166	\$67,761	\$66,250
2025-2030 Annual Rate	1.34%	1.36%	1.45%
<b>Average Household Income</b>			
2025 Average Household Income	\$72,674	\$77,823	\$76,522
2030 Average Household Income	\$78,865	\$84,752	\$83,447
<b>Per Capita Income</b>			
2025 Per Capita Income	\$27,671	\$28,856	\$28,310
2030 Per Capita Income	\$30,108	\$31,429	\$30,801
2025-2030 Annual Rate	1.70%	1.72%	1.70%
<b>Income Equality</b>			
2025 Gini Index	40.5	41.2	43.9
<b>Socioeconomic Status</b>			
2025 Socioeconomic Status Index	42.3	42.5	42.3
<b>Housing Unit Summary</b>			
Housing Affordability Index	85	86	83
2010 Total Housing Units	2,915	6,608	12,673
2010 Owner Occupied Hus (%)	65.9%	66.7%	64.6%
2010 Renter Occupied Hus (%)	34.1%	33.3%	35.4%
2010 Vacant Housing Units (%)	9.2%	8.8%	8.1%
2020 Housing Units	3,180	7,127	13,321
2020 Owner Occupied HUs (%)	68.7%	67.6%	65.1%
2020 Renter Occupied HUs (%)	31.3%	32.4%	34.9%
Vacant Housing Units	4.3%	4.9%	5.7%
2025 Housing Units	3,533	7,873	14,257
Owner Occupied Housing Units	70.2%	69.1%	66.6%
Renter Occupied Housing Units	29.8%	30.9%	33.4%
Vacant Housing Units	4.4%	4.4%	5.4%
2030 Total Housing Units	3,768	8,383	14,876
2030 Owner Occupied Housing Units	2,595	5,681	9,605
2030 Renter Occupied Housing Units	1,010	2,360	4,510
2030 Vacant Housing Units	163	342	761

# Business Summary Report (NAICS)

McDonald's



Drive time: 5, 10, 15 minute radii

Data for all businesses in area	5 minutes	10 minutes	15 minutes
Total Businesses	391	938	1,488
Total Employees	2,668	8,821	14,292
Total Population	8,843	20,475	36,452
Employee/Population Ratio (per 100)	30.2	43.1	39.2

by NAICS Codes	Businesses		Employees		Businesses		Employees		Businesses		Employees	
	Number	%	Number	%	Number	%	Number	%	Number	%	Number	%
Agriculture, Forestry, Fishing & Hunting (11)	2	0.5%	4	0.1%	6	0.6%	22	0.3%	18	1.2%	97	0.7%
Mining (21)	1	0.3%	3	0.1%	1	0.1%	3	0.0%	2	0.1%	5	0.0%
Utilities (22)	5	1.3%	37	1.4%	6	0.6%	47	0.5%	6	0.4%	51	0.4%
Construction (23)	31	7.9%	103	3.9%	57	6.1%	201	2.3%	85	5.7%	407	2.9%
Building Construction	8	2.0%	17	0.6%	20	2.1%	58	0.7%	26	1.8%	170	1.2%
Heavy/Civil Eng Construction	1	0.3%	5	0.2%	2	0.2%	10	0.1%	5	0.3%	36	0.3%
Specialty Trade Contractor	22	5.6%	81	3.0%	35	3.7%	134	1.5%	54	3.6%	201	1.4%
Manufacturing (31-33)	12	3.1%	180	6.8%	29	3.1%	1,416	16.1%	53	3.6%	1,656	11.6%
Wholesale Trade (42)	6	1.5%	100	3.8%	26	2.8%	470	5.3%	50	3.4%	818	5.7%
Durable Goods	4	1.0%	47	1.8%	17	1.8%	284	3.2%	26	1.8%	379	2.6%
Nondurable Goods	1	0.3%	51	1.9%	8	0.8%	183	2.1%	22	1.5%	435	3.0%
Trade Broker	1	0.3%	2	0.1%	1	0.1%	3	0.0%	2	0.1%	5	0.0%



**Source:** This infographic contains data provided by Esri-Data Axle (2025), Esri (2025). Data note: Not all NAICS subcategories for a 2 digit major category are being shown.

# Business Summary Report (NAICS)

McDonald's



Drive time: 5, 10, 15 minute radii

by NAICS Codes	5 minutes				10 minutes				15 minutes			
	Businesses		Employees		Businesses		Employees		Businesses		Employees	
	Number	%	Number	%	Number	%	Number	%	Number	%	Number	%
Retail Trade (44-45)	47	12.0%	430	16.1%	138	14.7%	1,534	17.4%	211	14.2%	2,295	16.1%
Motor Vehicle & Parts Dealers	8	2.0%	72	2.7%	18	1.9%	206	2.3%	31	2.1%	339	2.4%
Furniture & Home Furnishing Stores	0	0.0%	0	0.0%	2	0.2%	7	0.1%	5	0.3%	21	0.1%
Electronics & Appliance Stores	1	0.3%	3	0.1%	2	0.2%	5	0.1%	4	0.3%	13	0.1%
Building & Garden Equipment	2	0.5%	10	0.4%	13	1.4%	99	1.1%	21	1.4%	148	1.0%
Food & Beverage Stores	9	2.3%	232	8.7%	25	2.7%	733	8.3%	38	2.5%	1,025	7.2%
Health & Personal Care Stores	5	1.3%	32	1.2%	14	1.5%	104	1.2%	18	1.2%	126	0.9%
Gasoline Stations	4	1.0%	18	0.7%	10	1.1%	113	1.3%	18	1.2%	194	1.4%
Clothing, Shoe and Jewellery Stores	1	0.3%	10	0.4%	9	1.0%	49	0.6%	11	0.7%	55	0.4%
Sporting Goods, Hobby & Music Stores	12	3.1%	30	1.1%	30	3.2%	113	1.3%	44	3.0%	195	1.4%
General Merchandise Stores	5	1.3%	23	0.9%	14	1.5%	106	1.2%	22	1.5%	178	1.3%
Transportation & Warehousing (48-49)	9	2.3%	61	2.3%	24	2.6%	297	3.4%	40	2.7%	372	2.6%
Truck Transportation	2	0.5%	6	0.2%	7	0.8%	17	0.2%	11	0.7%	36	0.3%
Information (51)	6	1.5%	27	1.0%	21	2.2%	146	1.7%	28	1.9%	275	1.9%
Finance & Insurance (52)	26	6.7%	112	4.2%	54	5.8%	289	3.3%	77	5.2%	388	2.7%
Central Bank/Credit & Related Activities	16	4.1%	81	3.0%	30	3.2%	181	2.0%	39	2.6%	235	1.6%
Securities & Commodity Contracts	1	0.3%	2	0.1%	6	0.6%	15	0.2%	9	0.6%	23	0.2%
Funds, Trusts & Other Financial	8	2.0%	29	1.1%	18	1.9%	93	1.1%	28	1.9%	130	0.9%
Real Estate, Rental & Leasing (53)	25	6.4%	95	3.6%	56	6.0%	206	2.3%	85	5.7%	296	2.1%
Professional, Scientific & Tech Services (54)	22	5.6%	135	5.1%	55	5.9%	270	3.1%	79	5.3%	451	3.2%
Legal Services	7	1.8%	44	1.6%	16	1.7%	89	1.0%	22	1.5%	109	0.8%



**Source:** This infographic contains data provided by Esri-Data Axle (2025), Esri (2025). Data note: Not all NAICS subcategories for a 2 digit major category are being shown.

# Business Summary Report (NAICS)

McDonald's



Drive time: 5, 10, 15 minute radii

by NAICS Codes	5 minutes				10 minutes				15 minutes			
	Businesses		Employees		Businesses		Employees		Businesses		Employees	
	Number	%	Number	%	Number	%	Number	%	Number	%	Number	%
Management of Companies (55)	0	0.0%	0	0.0%	0	0.0%	0	0.0%	1	0.1%	3	0.0%
Administrative, Support & Waste Mgmt (56)	8	2.0%	51	1.9%	19	2.0%	92	1.0%	37	2.5%	171	1.2%
Educational Services (61)	11	2.8%	285	10.7%	27	2.9%	643	7.3%	43	2.9%	1,309	9.2%
Health Care & Social Assistance (62)	47	12.0%	385	14.4%	104	11.1%	956	10.8%	188	12.6%	2,413	16.9%
Ambulatory Health Care	29	7.4%	174	6.5%	62	6.6%	403	4.6%	113	7.6%	871	6.1%
Hospital	3	0.8%	35	1.3%	6	0.6%	83	0.9%	10	0.7%	642	4.5%
Nursing/Residential Care	6	1.5%	120	4.5%	13	1.4%	209	2.4%	28	1.9%	474	3.3%
Social Assistance	10	2.6%	57	2.1%	23	2.5%	262	3.0%	37	2.5%	426	3.0%
Arts, Entertainment & Recreation (71)	9	2.3%	29	1.1%	15	1.6%	78	0.9%	26	1.8%	113	0.8%
Accommodation & Food Services (72)	22	5.6%	195	7.3%	84	9.0%	1,057	12.0%	108	7.3%	1,284	9.0%
Accommodation	1	0.3%	1	0.0%	18	1.9%	230	2.6%	21	1.4%	241	1.7%
Food & Drinking Places	21	5.4%	193	7.2%	66	7.0%	827	9.4%	88	5.9%	1,043	7.3%
Other Services Except Public Admin (81)	61	15.6%	175	6.6%	136	14.5%	466	5.3%	214	14.4%	818	5.7%
Repair & Maintenance	16	4.1%	50	1.9%	38	4.0%	147	1.7%	61	4.1%	273	1.9%
Auto Repair & Maintenance	12	3.1%	37	1.4%	30	3.2%	112	1.3%	46	3.1%	199	1.4%
Personal & Laundry Service	20	5.1%	68	2.5%	43	4.6%	156	1.8%	61	4.1%	219	1.5%
Civic and Other Orgs	26	6.7%	57	2.1%	55	5.9%	163	1.9%	92	6.2%	326	2.3%
Public Administration (92)	27	6.9%	249	9.3%	50	5.3%	614	7.0%	83	5.6%	1,048	7.3%
Unclassified Establishments (99)	14	3.6%	10	0.4%	31	3.3%	11	0.1%	54	3.6%	20	0.1%
<b>Total (11-99)</b>	<b>391</b>	<b>100.0%</b>	<b>2,668</b>	<b>100.0%</b>	<b>938</b>	<b>100.0%</b>	<b>8,821</b>	<b>100.0%</b>	<b>1,488</b>	<b>100.0%</b>	<b>14,292</b>	<b>100.0%</b>



**Source:** This infographic contains data provided by Esri-Data Axle (2025), Esri (2025). Data note: Not all NAICS subcategories for a 2 digit major category are being shown.

# Business Summary Report (SIC)

McDonald's



Drive time: 5, 10, 15 minute radii

Data for all businesses in area	5 minutes	10 minutes	15 minutes
Total Businesses	391	938	1,488
Total Employees	2,668	8,821	14,292
Total Population	8,843	20,475	36,452
Employee/Population Ratio (per 100)	30.2	43.1	39.2

by SIC Codes	Businesses		Employees		Businesses		Employees		Businesses		Employees	
	Number	%	Number	%	Number	%	Number	%	Number	%	Number	%
Agriculture & Mining (01-14)	6	1.5%	31	1.2%	15	1.6%	71	0.8%	34	2.3%	177	1.2%
Construction (15-17)	31	7.9%	103	3.9%	57	6.1%	201	2.3%	84	5.7%	401	2.8%
Manufacturing (20-39)	10	2.6%	166	6.2%	24	2.6%	1,390	15.8%	44	3.0%	1,682	11.8%
Transportation (40-47)	15	3.8%	84	3.1%	36	3.8%	344	3.9%	56	3.8%	453	3.2%
Communication (48)	3	0.8%	18	0.7%	13	1.4%	99	1.1%	15	1.0%	138	1.0%
Utility (49)	6	1.5%	48	1.8%	9	1.0%	65	0.7%	10	0.7%	74	0.5%
Wholesale Trade (50-51)	6	1.5%	100	3.8%	26	2.8%	470	5.3%	50	3.4%	818	5.7%
Retail Trade Summary (52-59)	70	17.9%	638	23.9%	209	22.3%	2,390	27.1%	308	20.7%	3,381	23.7%
Home Improvement	2	0.5%	10	0.4%	13	1.4%	99	1.1%	21	1.4%	148	1.0%
General Merchandise Stores	3	0.8%	19	0.7%	8	0.8%	90	1.0%	14	0.9%	144	1.0%
Food Stores	11	2.8%	246	9.2%	29	3.1%	762	8.6%	44	3.0%	1,064	7.4%
Auto Dealers & Gas Stations	12	3.1%	91	3.4%	28	3.0%	315	3.6%	44	3.0%	507	3.5%
Apparel & Accessory Stores	1	0.3%	10	0.4%	6	0.6%	40	0.5%	7	0.5%	44	0.3%
Furniture & Home Furnishings	1	0.3%	3	0.1%	5	0.5%	14	0.2%	11	0.7%	40	0.3%
Eating & Drinking Places	21	5.4%	193	7.2%	66	7.0%	827	9.4%	87	5.8%	1,040	7.3%
Miscellaneous Retail	19	4.9%	66	2.5%	54	5.8%	243	2.8%	81	5.4%	393	2.8%

**Source:** This infographic contains data provided by Esri-Data Axle (2025), Esri (2025).

# Business Summary Report (SIC)

McDonald's



Drive time: 5, 10, 15 minute radii

by SIC Codes	5 minutes				10 minutes				15 minutes			
	Businesses		Employees		Businesses		Employees		Businesses		Employees	
	Number	%	Number	%	Number	%	Number	%	Number	%	Number	%
Finance, Insurance, Real Estate (60-67)	53	13.6%	245	9.2%	101	10.8%	504	5.7%	149	10.0%	686	4.8%
Banks, Savings & Lending	19	4.9%	86	3.2%	32	3.4%	185	2.1%	42	2.8%	240	1.7%
Securities Brokers	1	0.3%	2	0.1%	6	0.6%	15	0.2%	9	0.6%	23	0.2%
Insurance Carriers & Agents	8	2.0%	29	1.1%	18	1.9%	93	1.1%	28	1.9%	130	0.9%
Real Estate, Investment Offices	25	6.4%	128	4.8%	45	4.8%	210	2.4%	70	4.7%	293	2.0%
Services Summary (70-89)	150	38.4%	976	36.6%	368	39.2%	2,661	30.2%	600	40.3%	5,413	37.9%
Hotels & Lodging	1	0.3%	1	0.0%	18	1.9%	230	2.6%	21	1.4%	241	1.7%
Automotive Services	13	3.3%	38	1.4%	35	3.7%	123	1.4%	57	3.8%	229	1.6%
Movies & Amusements	8	2.0%	27	1.0%	17	1.8%	89	1.0%	27	1.8%	120	0.8%
Health Services	32	8.2%	304	11.4%	71	7.6%	631	7.2%	132	8.9%	1,784	12.5%
Legal Services	3	0.8%	6	0.2%	11	1.2%	44	0.5%	16	1.1%	63	0.4%
Education Inst. & Libraries	10	2.6%	240	9.0%	23	2.5%	597	6.8%	38	2.5%	1,261	8.8%
Other Services	82	21.0%	358	13.4%	193	20.6%	947	10.7%	310	20.8%	1,715	12.0%
Government (91-97)	27	6.9%	249	9.3%	50	5.3%	614	7.0%	83	5.6%	1,048	7.3%
Unclassified Establishments (99)	14	3.6%	10	0.4%	31	3.3%	11	0.1%	54	3.6%	20	0.1%
Totals (01-99)	391	100.0%	2,668	100.0%	938	100.0%	8,821	100.0%	1,488	100.0%	14,292	100.0%



**Source:** This infographic contains data provided by Esri-Data Axle (2025), Esri (2025).